

A SIMPLE GUIDE TO DUTY OF CARE FOR YOUR WASTE

right
waste

right
place

ARE YOU COMPLIANT?

This guide will help you with your duty of care

56%

56% OF UK COMPANIES ARE NOT FULLY COMPLYING WITH DUTY OF CARE AND RELATED REGULATIONS



90%

90% OF NON-COMPLIANT BUSINESSES, WHEN INFORMED ABOUT DUTY OF CARE, ASPIRE TO COMPLY



94%



94% OF NON-COMPLIANT BUSINESSES ARE SMEs (UNDER 250 STAFF)

1/4

ONE QUARTER OF NOT FULLY COMPLIANT BUSINESSES PUT ALL THEIR WASTE IN ONE BIN.

HOW CAN I FIND OUT MORE?

Visit: www.rightwasterightplace.com

Follow: @RWRP2016

Like: www.facebook.com/Right-Waste-Right-Place

Email: info@rightwasterightplace.com



environmental
services
association



CIWM



Environment
Agency

A SIMPLE GUIDE TO DUTY OF CARE FOR YOUR WASTE

right
waste

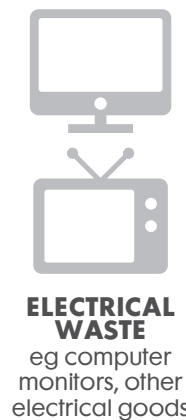
right
place

WHAT IS MY DUTY OF CARE?

By law, since 1990, it has been a responsibility of "any commercial activity" - whether run from home or its own premises - to manage the waste it produces safely and responsibly.

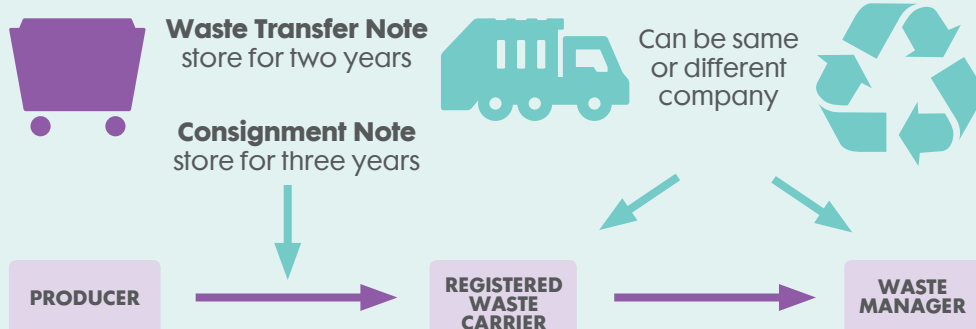
WHAT IS WASTE?

Any material or item which you, or your business, have no further use for and wish to be removed. It might be capable of repair or re-use but you are discarding it.



WHO DOES DUTY OF CARE APPLY TO?

It applies to everyone who produces or manages waste.



WHEN DOES DUTY OF CARE APPLY?

Your duty of care starts from the moment you produce the waste. It continues even when you give it to a licensed waste business to deal with, until it is recovered or disposed of.

You're still responsible to check how that business deals with your waste.

If you suspect your waste carrier is not following the duty of care law you should report it.

- Call the Environment Agency hotline 0800 80 70 60 (24-hour service)

- Report online at www.crimestoppers-uk.org/give-information/give-information-online/

WHAT CAN I DO WITH MY WASTE?

You should determine whether the waste is hazardous or not. There are a few ways you can check this:

DOES IT HAVE A DESCRIPTION OR SYMBOL on the goods?

CHECK the relevant need to know guide

ASK THE SUPPLIER of the goods

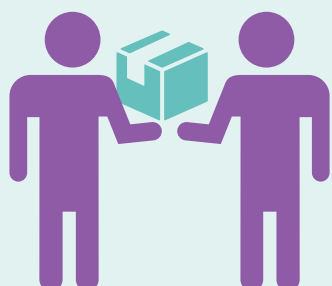
CHECK THE GUIDANCE at www.gov.uk/dispose-hazardous-waste/overview

If your waste is hazardous then it needs to be dealt with by a specialist waste company. **Remember, don't mix hazardous and non-hazardous wastes together!**

IF YOUR WASTE IS NON-HAZARDOUS, CAN IT BE...?

RE-USED?

Could you sell, donate or swap your unwanted items?



REPAIRED?

Search the internet for local repair services or contact your local council.



RECYCLED?

Is it part of your waste contractor's normal recycling service? If not, contact them to find out how else they can help.



IF NOT, IT NEEDS TO BE DISPOSED OF CORRECTLY.

HOW DO I STORE IT BEFORE COLLECTION?

ENSURE

it's stored and labeled properly so nothing can escape such as litter, liquids or odour.

PREVENT ACCESS

to it by others, eg in a locked bin or secured compound.

IN SPECIALISED CONTAINERS

if required eg hygiene waste, liquid waste or hazardous waste.

IF IN DOUBT

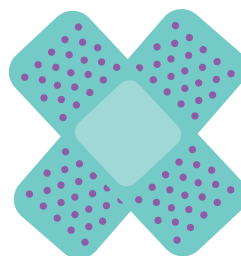
ask your waste contractor first, then your Environment Agency office or local authority.

WHICH WASTES NEED TO BE KEPT APART?



DRY RECYCLABLES

like metals, paper, glass and plastic which should be collected in individual containers where practicable



HYGIENE OR HEALTHCARE

this covers sanitary waste, first aid waste etc

HOW SHOULD I MOVE MY WASTE?

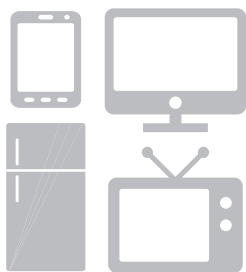
Your waste carrier or waste contractor will arrange the movement of your waste. If you intend to move it yourself you will need to be registered as a waste carrier. Each waste stream will have its own requirement for transport and will need to be addressed separately.

Hazardous or hygiene/healthcare wastes will have to be compliant with the Carriage of Dangerous Goods.



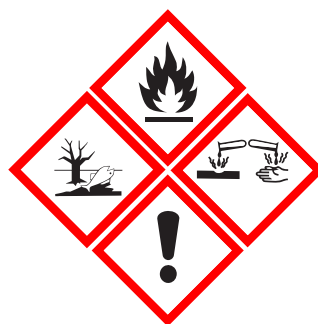
CONFIDENTIAL WASTE

keep in secure containers and dispose of in a security-appropriate way (shredding etc)



ELECTRONIC WASTE

like phones, computers, TVs, sound systems, fridges



HAZARDOUS WASTE

batteries, acid, oils, some light bulbs etc

WHAT MUST I KNOW: ABOUT WHAT HAPPENS WITH MY WASTE?

WHERE IT'S GONE

Licensed landfill, Energy from Waste and recycling centres

HOW IT'S COLLECTED, TRANSPORTED, TREATED

Is my carrier registered?

IS ALL THE PAPERWORK COMPLETE?

Waste Transfer Note and Consignment Note



HOW CAN I FIND OUT MORE?

Visit: www.rightwasterightplace.com

Follow: @RWRP2016

Like: www.facebook.com/Right-Waste-Right-Place

Email: info@rightwasterightplace.com



Environment Agency