

A stylized map of North Lincolnshire is shown in the background, divided into light blue, pink, light green, and light orange sections. Overlaid on the map are several colorful speech bubbles: a large red one, a smaller green one, a blue one, and an orange one. The text is centered over the map.

North Lincolnshire

**COMMUNITY
SAFETY
PARTNERSHIP**

PARTNERSHIP PLAN 2018/20

Version Control

Authors:

Stuart Minto,
Principal Officer Safer Neighbourhoods
stuart.minto@northlincs.gov.uk

Julie Poole,
Strategic Board Development Co-ordinator
julie.poole@northlincs.gov.uk

Approved by:

Community Safety Partnership

Date Approved:

March 2018

Last Updated:

October 2018

Review Date:

March 2019

Contents

Foreword	03
Introduction	05
Outcome Based Accountability	06
The North Lincolnshire Perspective	07
Outcomes – How do we make them happen?	13
Partnership and Governance Arrangements	15
Community Safety Partnership	16



Foreword

The Community Safety Partnership will work to enable communities to be safer, stronger and resilient. We will contribute toward people being safe, well, prosperous and connected where North Lincolnshire has a reputation for being the best place to live, work, invest and visit.

Working together, we want to better understand local people, their diverse need and how we can enable them to feel safe. This will be at the heart of this Community Safety Partnership – Partnership Plan (known hereafter as the Partnership Plan).

We will work with the people and communities to base the partnership on what works so that our collective activity makes a difference to the people we serve. We are on a transformational journey and it is our ambition to work better together and that we make the best use of our available resources to meet agreed priorities in a changing environment.

There have been some excellent examples of partnership working and there is evidence of improved outcomes for people and communities:

- Strong partnership working through the 17 Neighbourhood Action Teams working with local communities across North Lincolnshire to reduce crime and anti-social behaviour.
- A new approach to community engagement through the Westcliff Hub, building resilience and a legacy of community involvement, youth engagement and civic pride.
- The successful bid and award of additional monies to support our work in the Scunthorpe Town Centre.

- Successful work with local businesses to reduce crime and improve the experience of people who live, work and visit North Lincolnshire.
- The launch of the Red, Amber, Green scheme to work with young people and schools to improve road safety and reduce nuisance parking.
- Launch of a locally based “speed watch” pilot.

New crime categories introduced by the Home Office covering things such as cyber bullying, harassment and offences linked to social media are now included in our intelligence and has resulted in reports of violent crime rising both locally and nationally. The partnership recognises that we have to respond to the new crime types and an increase in reported crime across the area (in line with national trends) to focus our collective efforts to combat this.

From 2018, there will be a focus on activity that is making the biggest difference. We will:

- Ensure that partnership activities are targeted at areas of highest need, concentrating efforts on those places, people and issues that are causing the most harm to our communities.
- Engage with communities in a meaningful way through the operation of the Neighbourhood Action Teams, service user groups and appropriate forums.
- Make best use of available information and intelligence sources to direct operational activity.
- Measure outcome within a results based - performance management framework.

- Increase partnership effectiveness by ‘joined up’ working.
- Enable the voluntary and community sector in helping to reduce crime, disorder and alcohol misuse.
- Research, identify and disseminate recognised ‘best practice’ to our partners and the public.

To conclude, we will focus on our most vulnerable people and communities, on the things that matter the most to local people and on the crimes that cause the most threat, risk and harm to the people in the area.





Darren Downs
*South Bank Divisional
Commander (Chief
Superintendent)
Humberside Police
Chair of Community
Safety Partnership*



Mick Gibbs
*Director of Children and
Community Resilience
North Lincolnshire
Council
Vice Chair of Community
Safety Partnership*



Nick Hamilton-Rudd
*Head of North and North
East Lincolnshire
National Probation
Service*



Cllr Ralph Ogg
*Cabinet Member for
Safer Greener Cleaner
Places
North Lincolnshire
Council*



Clare Linley
*Director of Nursing and
Quality
North Lincolnshire
Clinical Commissioning
Group*



Simon Donnachie
*Head of Service Delivery,
North Lincolnshire
District and Control
Humberside Fire and
Rescue Service*



Keith Hunter
*Humberside Police and
Crime Commissioner*



Becky Bailey
*Community Director
Community
Rehabilitation Company*

These signatories reflect the statutory agencies and key partners associated with the Community Safety Partnership. Other agencies also contribute to the ambitions and outcomes of the Community Safety Partnership.



Introduction

North Lincolnshire has an established strategic group to direct the work of the partnership. Known as the Community Safety Partnership, the partnership will regularly engage and consult with the community about their priorities and progress towards achieving them.

The Community Safety Partnership has to set out a plan based upon a wide range of data, including recorded crime levels and patterns, which has led to the identification of the priorities. This plan includes a strategy to reduce reoffending.

This Partnership Plan has been developed utilising analysis from the North Lincolnshire Joint Strategic Intelligence Assessment. The Joint Strategic Intelligence Assessment pulls together a wide range of crime, offending and agency data and provides an accurate assessment of the previous reporting period, including crime trends and emerging issues. The Joint Strategic Intelligence Assessment also incorporates community concerns around crime and anti-social behaviour and helps us to understand what we need to do to contribute to our intended outcome for individuals and communities to be:

- Safe, Strong and Resilient

This Partnership Plan supports North Lincolnshire Council's ambition that North Lincolnshire is the best place to live, work, invest and visit and the intended outcomes that residents, children, families, vulnerable adults and communities are:

- Safe
- Well
- Prosperous
- Connected

The expectation is that individuals, families and communities will be enabled to become more resilient and independent. The partnership will focus targeted support to assist those people and communities most in need.

This Partnership Plan is aligned to and supports the Humberside Police and Crime Commissioners Police and Crime Plan, which aims to:

- deliver increasingly self-sustaining and safe communities in the Humber area
- build public confidence in the agencies involved in creating safer communities
- provide services to victims that meet their needs

The Office of the Police and Crime Commissioner has made Community Grant funding available to focus upon local need in support of their plan. Examples of this include services to prevent domestic abuse incidents, reduce the impact of domestic abuse in the area, and support victims of crime and support young people to keep safe.

This Partnership Plan responds to key drivers identified above. It sets out the partnership approach to creating safe, strong and resilient individuals and communities in North Lincolnshire. It clarifies the top level actions that we must work together on across the Community Safety Partnership and sets out key performance targets against which progress will be measured, leading to improved outcomes for people and communities in North Lincolnshire.

Outcome Based Accountability

Outcomes Based Accountability principles underpin the Community Safety Partnership's approach. Five key questions inform our monitoring, evaluation and next steps planning:

- What is the outcome we want for our children, families and wider communities?
- What is the curve we want to turn – what does success look like?
- What is the story behind the baseline – where have we been and where are we headed?
- How much did we do, how well did we do it and is anyone better off (performance measures)?
- Are we making a difference (indicators)?

The Outcomes Based Accountability approach recognises that a whole system/partnership approach is required to achieve outcomes for a whole population and that also includes our communities and any asset located in that community or location. It therefore encourages the building of community connectivity and resilience. Starting from a desired outcome the process works backwards to identify the indicators that will guide us to the end result: the outcome. By understanding the factors that are driving the current baseline of the chosen indicators, we can therefore collectively agree a set of actions with a reasoned chance of moving the indicator in the required direction. The indicators will also support the alignment of our commissioning intentions, acknowledging and recognising that the performance measures attributed to a particular commissioned service contribute to the overall desired outcome.

The Community Safety Partnership has agreed three overarching outcomes:

Safe	People feel safe and are safe
Strong	People take responsibility for their community
Resilient	People recover and withstand adverse impact

The North Lincolnshire Perspective

Our BASELINE - what do we know about crime and disorder in North Lincolnshire

The Joint Strategic Intelligence Assessment was undertaken in 2017 to provide an accurate picture of the current, emerging and longer-term issues facing the Community Safety Partnership. The Joint Strategic Intelligence Assessment shows performance against the priorities set out in the previous North Lincolnshire Safer Communities Plan 2017-18, which focussed on the following priorities:

1. Tackle problems in priority wards
2. Reduce prolific offending and reoffending
3. Reduce alcohol related violent crime
4. Reduce repeat domestic abuse victimisation
5. Respond to locally identified crime and anti-social behaviour issues and target child sexual exploitation

1. Priority wards

- Crime increased in all of the priority wards:
 - 21% increase in Ashby Ward (215 more crimes)
 - 17% increase in Brumby Ward (210 more crimes)
 - 15.6% increase in Crosby & Park Ward (221 more crimes)
 - 21.5% increase in Town Ward (393 more crimes)

2. Offending and reoffending

- Humberside Criminal Justice Board reoffending data is not currently available for this section

3. Alcohol related crime

- 32.5% increase in alcohol related violence against the person across North Lincolnshire (162 more crimes)
- 30.5% increase in alcohol related violence against the person in the 4 priority wards of Ashby, Brumby, Crosby & Park and Town (86 more crimes)

4. Repeat domestic abuse victimisation

- 30% increase in domestic abuse related crime across North Lincolnshire (394 more crimes)
- 32.7% increase in domestic abuse related crime in the priority wards of Ashby, Brumby, Crosby & Park and Town (201 more crimes)

5. Locally identified crime, anti-social behaviour issues and child sexual exploitation

- 2.5% increase in anti-social behaviour incidents across North Lincolnshire (76 more incidents)
- 9% increase in anti-social behaviour incidents in the 4 priority wards of Ashby, Brumby, Crosby & Park and Town (125 more incidents)
- For child sexual exploitation – see abuse and exploitation section page 8

Crime and Anti-social Behaviour Levels

- Violent crime with injury, burglary, criminal damage and shop thefts accounted for almost half of all crime that was experienced in North Lincolnshire
- Reported crime increased by 20.1% compared to the previous Joint Strategic Intelligence Assessment period; burglary increased by 15%, arson and criminal damage offences increased by 15.5%, violent crime increased by 26.8%, drug offences, mainly offences related to possession of drugs, increased by 8% and sexual offences fell by 1%.

Priority Neighbourhoods

- The primary crime areas in North Lincolnshire remain in the Scunthorpe town centre/Crosby area.
- The night time economy has an effect on levels of all types of crime in Scunthorpe town centre.
- The wards of Ashby, Brumby, Crosby & Park and Town were identified as priority areas. The levels of violent crime, burglary, vehicle crime and arson and criminal damage experienced in these wards is above the levels experienced in the whole of North Lincolnshire.
 - Ashby – all offence types, with the exception of burglary, theft of motor vehicle and violent crime with injury were above the rate for North Lincolnshire. Compared to the previous Joint Strategic Intelligence Assessment period the only offence types to see a decrease were arson & criminal damage and violent crime with injury.

- Brumby – all offences types, with the exception of theft from motor vehicle were above the North Lincolnshire rate. The only offence types to see decreases when compared to the previous Joint Strategic Intelligence Assessment period were burglary and anti-social behaviour.
- Crosby & Park – all offence types were above the rate for North Lincolnshire. Compared to the previous Joint Strategic Intelligence Assessment period the only offence type to see a decrease was arson & criminal damage.
- Town – all offence types are above the North Lincolnshire rate. Compared to the previous period no offence types saw a decrease.
- Hate crimes increased by 104% (+76 crimes) compared to the 2015/16 Joint Strategic Intelligence Assessment period and a hate incidents increased by 6.5% (+6 incidents). Humberside Police changed their crime recording software in June 2017 and these increases may, in part, be due to how crimes/incidents are recorded on the old and new systems.
- Overall successful completions from drug treatment fell by 1% and local successful completion rates (11.4%) were lower than the national average (15.3%).
- The majority of drug offences related to the possession of illicit drugs of which possession of cannabis accounted for 60%.
- In North Lincolnshire 43% of drug offences occurred in Crosby & Park and Town wards.
- Numbers in alcohol treatment fell by 5%. Successful completions from alcohol treatment remained similar.
- Nearly 90% of alcohol related crime is violence against the person.

Abuse and Exploitation

- There has been a reduction in both the number of children who have experienced child sexual exploitation and children who are at risk of child sexual exploitation being discussed at the multi-agency child sexual exploitation risk meetings (known as MACE) and their level of risk.
- There has also been a reduction in both the number of suspected perpetrators/perpetrators being discussed at the MACE meeting and the level of risk.
- Child criminal exploitation is an emerging concern in North Lincolnshire. A problem profile is currently being completed to assess the extent of the issue.



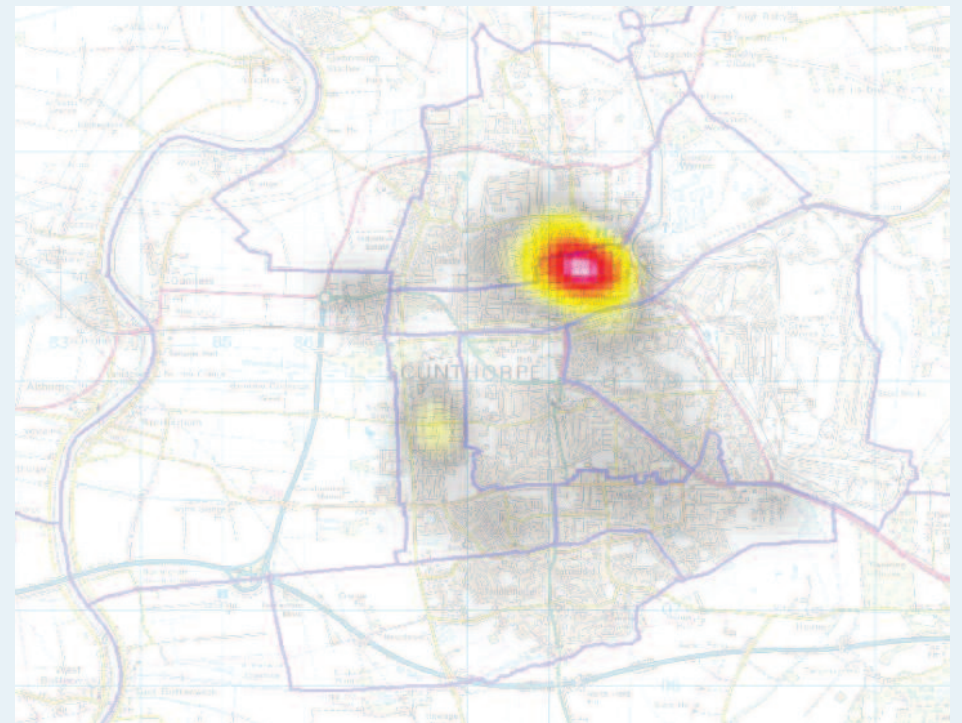
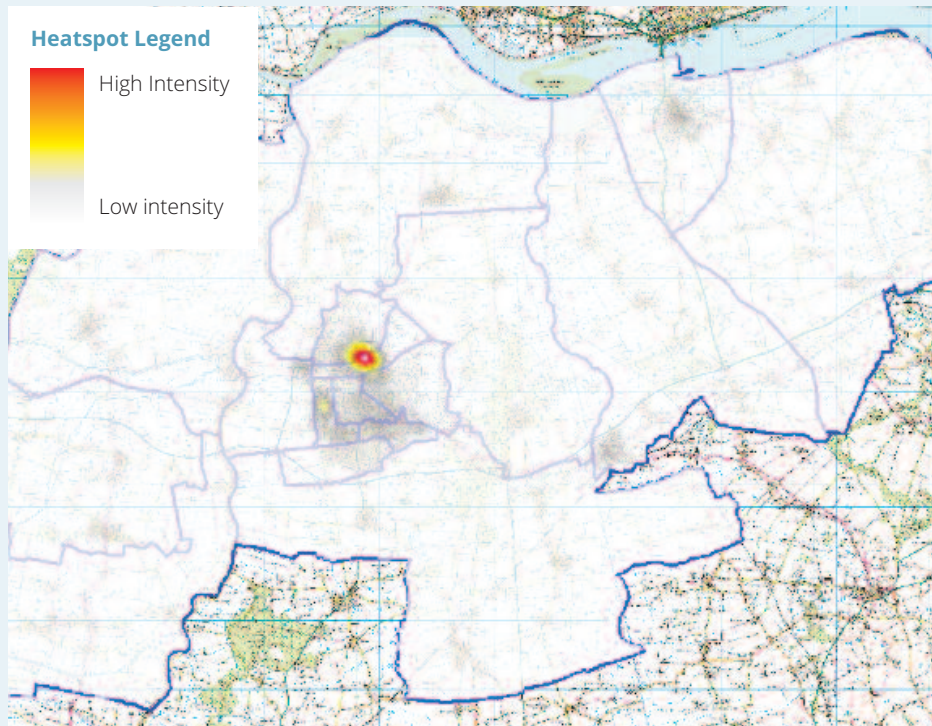
Our STORY BEHIND THE BASELINE

Overall, North Lincolnshire is a vibrant, multi-cultural and creative place with community strengths and assets.

In general, North Lincolnshire remains a safe place to live, work and visit; however, crime has risen – in line with national trends.

The Community Safety Partnership recognises that this is disproportionate across wards within the area and therefore creating a need to target these areas.

The maps below show the hotspot areas for all crime within North Lincolnshire. The main crime hotspot is located within Town and Crosby & Park wards with a lesser hotspot in the Westcliff area of Brumby ward.

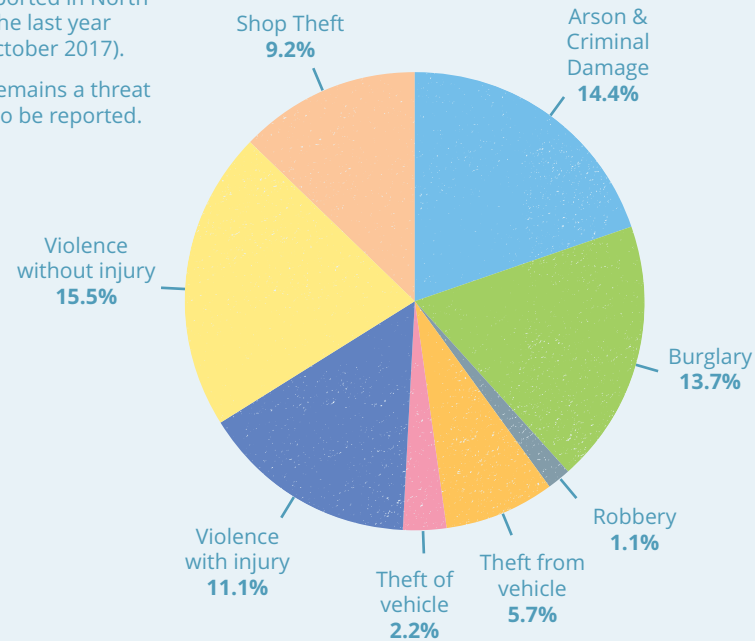


Scunthorpe North has the highest level of crime, anti-social behaviour, waste and fly tipping, poor housing conditions, private rented accommodation and migration levels. This 'perfect storm' of issues is making the settled community struggle to be resilient, invest in their area and stay put.

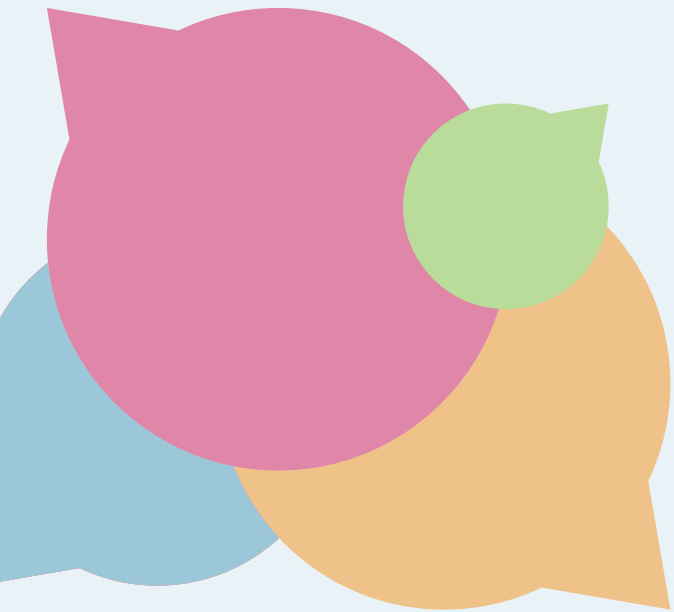
Key offence types in North Lincolnshire (2016-17)

This chart shows the main crime types that were reported in North Lincolnshire over the last year (October 2016 - October 2017).

Traditional crime remains a threat and is more likely to be reported.



While we are still concerned about traditional crime we must recognise that there are new threats to North Lincolnshire and a balanced Outcome Based Accountability approach will allow us to tackle these issues by working in partnership with communities to defeat crime and reduce victims.



Prevent and Counter Terrorism

The Prevent agenda is designed to stop people becoming violent extremists. Work has been undertaken through national and local government to enable local communities to work in partnership to deliver on this agenda. Humberside Police produce a Counter-Terrorism Locality Profile, which identifies both high risk individuals and potential targets within local communities for violent extremism. This profile is produced annually and its contents are presented to Prevent Silver Group for North Lincolnshire.

Work to raise awareness, generate intelligence and support those who are vulnerable is delivered through the Prevent Silver Group and the Channel Panel for North Lincolnshire. To complement the Humber Wide Counter-Terrorism Locality Profile a local Problem Profile for Prevent has been developed and continues to be updated on a regular basis. Risk in North Lincolnshire remains low, but we must ensure we continue to work with communities to raise awareness and increase engagement to those who may become disenfranchised.

Child Sexual Exploitation

Child sexual exploitation is currently a key priority for all partners and the strategic approach and action plan has been endorsed and jointly owned by the Local Safeguarding Children's Board, the Community Safety Partnership and the Children and Young People's Partnership. The processes and procedures are subject to appropriate governance and scrutiny and are reviewed on a regular basis. Each individual agency is responsible for ensuring that the requirements of "Working Together" are adhered to and delivered as required.

North Lincolnshire has a multi-agency action plan in relation to child sexual exploitation and a significant amount of work has taken place to raise awareness and reduce risk.

- There has been a reduction in both the number of children who have experience child sexual exploitation and children who are at risk of child sexual exploitation being discussed at the MACE meetings and their level of risk.
- There has been a reduction in both the number of suspected perpetrators/perpetrators being discussed at the MACE meetings and their level of risk.
- The general increase in positive disruption activity generated from MACE meetings has seen a commensurate reduction in the level of risk for both children who have experienced child sexual exploitation/or who are at risk of child sexual exploitation and suspected perpetrators/perpetrators.
- It is evident that child sexual exploitation awareness is part of all partners daily working business with increased levels of identification across agencies of relevant information and the increased sharing of this intelligence.

Child Criminal Exploitation

Child criminal exploitation is an emerging concern across the whole country, particularly related to substance misuse and drug dealing. In North Lincolnshire we have developed a robust process linked to the MACE to help understand the nature and extent of any risk. To share intelligence, provide support and focus on disruption of those who may be involved in local criminality.

Modern Day Slavery and Trafficking

Slavery is not a new phenomenon; however, we have seen an increase nationally in the number of people who are coming into the country and exploited. The numbers of identified cases in North Lincolnshire are extremely low, but the impact on victims and communities can be very high. We are committed to ensuring that all staff have a clear understating of the risks and how to identify potential victims and to ensure that we have in place appropriate mechanisms for offering support and disrupting those who may exploit vulnerable people for their own gain.

For all of these issues North Lincolnshire remains a low risk area, however we are committed to ensuring that this continues and people in the area can be confident that we understand the local threats, have robust processes in place to support victims, target offenders and empower communities to take a stand against these issues.



Horizon Scanning

- The structure of public sector organisations has gone through considerable change and has affected the processes in place.
- The new Police and Crime Plan has focussed on reenergising Community Safety Partnerships and the opportunity of grant funding should be utilised in order to tackle the key priorities.
- There have been reviews and legislation published which include:
 - The Casey Review
 - The Wood Review
 - Homeless Reduction Act
 - HMI Probation Thematic Inspection of Youth Offending Teams
- Consideration should be given to the above when planning future activities.
- North Lincolnshire currently has high levels of young people who are not participating in the labour market and a particular concern is the number of people claiming Jobseekers Allowance.
- The qualification levels of residents aged 16-64 years are lower than the regional and national figures.
- There has been significant investment in North Lincolnshire including the North Lincolnshire Shopping Park with the opening of Debenhams and Marks and Spencers.
- The development of the investments are positive for North Lincolnshire however they give further opportunities for offenders to commit crime i.e. an increase in shop theft.
- Homelessness and begging has been a significant issue and the new act which is implemented in April 2018 will place greater duties on the Local Authority in the response to homelessness.
- Social media is an activity that people now use as part of day-to-day life. There are significant risks and impacts of cyber-crime to the public.
- Safer Neighbourhoods do utilise their website to communicate with members of the public and future developments may be considered into sharing crime prevention advice via social media sites including Facebook and Twitter.
- North Lincolnshire has a number of developments in the process including Lincolnshire Lakes and the development of the town centre which will see approximately 6,000 dwellings being built.
- The new developments will be positive for North Lincolnshire but will also create an element of risk as it attracts people to the area and this will need to be monitored.
- An amendment to the Modern Day Slavery Act 2015 has placed a requirement for public sector bodies from 2017 to ensure that slavery and human trafficking are not taking place in their own organisations or in their supply chains. This will need to be reported on annually.



Outcomes – How do we make them happen?

Taking account key drivers, our baseline and story behind the baseline, the Community Safety Partnership have identified three outcomes for the duration of the plan, which are aligned with the Council's outcomes and the Police and Crime Plan Aims:

Community Safety Partnership Outcomes	Council Outcomes	Police and Crime Plan Aims
<p>1 SAFE – people feel safe and are safe</p> <ul style="list-style-type: none"> ● Target offenders ● Protect the vulnerable ● Focus on communities in need 	<p>Safe & Well</p>	<p>Deliver increasingly self-sustaining and safe communities in the Humber area</p>
<p>2 STRONG – people take responsibility for their community</p> <ul style="list-style-type: none"> ● Build community cohesion ● Develop volunteering ● Enhance Neighbourhood Watch and Action Teams 	<p>Connected & Prosperous</p>	<p>Build public confidence in the agencies involved in creating safer communities</p>
<p>3 RESILIENT – people recover and withstand adverse impact</p> <ul style="list-style-type: none"> ● Reduce impact of domestic abuse ● Reduce impact of substance and alcohol misuse ● Safeguard the vulnerable from exploitation 	<p>Safe & Well</p>	<p>Provide services to victims that meet their needs</p>

OUTCOME 1

SAFE – People Feel Safe and Are Safe

TURNING THE CURVE – Overall Reduction in Crime

Turning The Curve Outline Action Plan

Safe

- Target offenders
- Protect the vulnerable
- Focus on communities in need

Driving community level developments and community standards that create a safe environment.

Identify and target offenders who are responsible for a disproportionate level of crime.

Use intelligence to target resources in areas of highest overall need to reduce crime and the fear of crime.

Targeted activities and interventions in problem wards will result in improved outcomes, particularly Ashby, Brumby, Crosby & Park and Town.

How Do We Make This Happen – Our Priority Actions/Proposed Activity

- Work collaboratively with Neighbourhood Action Teams to identify and resource locality issues
- Domestic Abuse Strategy - focussing on improving prevention and early intervention
- Contribute to the development and implementation of the Child Exploitation Strategy focussing on child sexual exploitation, child criminal exploitation, modern day slavery and human trafficking
- Fully utilise the protections offered by the Public Space Protection Order and ensure we are maximising opportunities to reduce those behaviours which impact on communities.

Proxy Indicators

- Reduced incidents of criminal damage
- Reduced incidents of violence
- Reduced incidents of anti-social behaviour
- Increased feeling of safety across the community

OUTCOME 2

STRONG – people take responsibility for their community

TURNING THE CURVE - Increased Neighbourhood Watch groups

Turning The Curve – Outline Action Plan

Strong

- Build community cohesion
- Develop volunteering
- Enhance Neighbourhood Watch and Action Teams

Driving community level developments and progress on our performance indicators will contribute to our community standards and impact on local (Connected) outcomes relating to digital connectivity, being engaged, moving around and giving back.

Robust communications in place and opportunities for community engagement leading to enhanced transparency, positive and authentic interactions, vulnerable people having influence and people and communities helping themselves.

Asset based community development, through discovering strengths, organising and mapping, linking and mobilising and community driven initiatives.

New conversations to develop strategic intelligence and community intelligence.

How Do We Make This Happen – Our Priority Actions/Proposed Activity

- Further develop our work with Neighbourhood Watch, Neighbourhood Action Teams and other local bodies to help reduce crime
- Develop and implement robust communication and community engagement framework
- Contribute to the development of a Community Cohesion Plan for North Lincolnshire, working with partners and communities to increase integration and collective civic pride.
- Work together to develop a cross agency volunteer academy

Proxy Indicators

- Increased involvement in Neighbourhood Watch
- Increase in general volunteering in local communities
- Reduction in hate crime incidents
- Reduced re-offending
- Enhanced public engagement
- Increased numbers of those who are 'work ready'

OUTCOME 3

RESILIENT – People Recover and Withstand Adverse Impact

TURNING THE CURVE – Repeat Victims of Crime

Turning The Curve – Outline Action Plan

Resilient	<ul style="list-style-type: none"> ● Reduce impact of Domestic Abuse ● Reduce impact of Substance and Alcohol misuse ● Safeguard the vulnerable from exploitation
------------------	--

Driving community level developments and progress on our performance indicators will contribute to our community standards and impact on local (well) outcomes relating to health services, pride and belonging, healthy activities and green and open spaces, as well as local (connected) outcomes relating to access to child care, local business and economy, good schools and access to work.

How Do We Make This Happen – Our Priority Actions/Proposed Activity

- Domestic Abuse Strategy – focussing on increasing empowerment and resilience in communities, identifying prevalence, and reducing the number of victims of domestic abuse.
- Develop a new Substance Misuse action plan and maximise opportunities for prevention, early intervention, reduce offending and rehabilitation.
- Work with partners to implement the requirements of the Homelessness Reduction Act 2017
- Work across partnership and with other Boards to reduce exploitation.

Proxy Indicators

- Reduced incidents of homelessness
- Reduced repeat victims of domestic abuse
- Reduced number of drug related crimes

How the effectiveness of our plan will be monitored

Detailed action plans will be agreed and monitored via the action sub-groups.

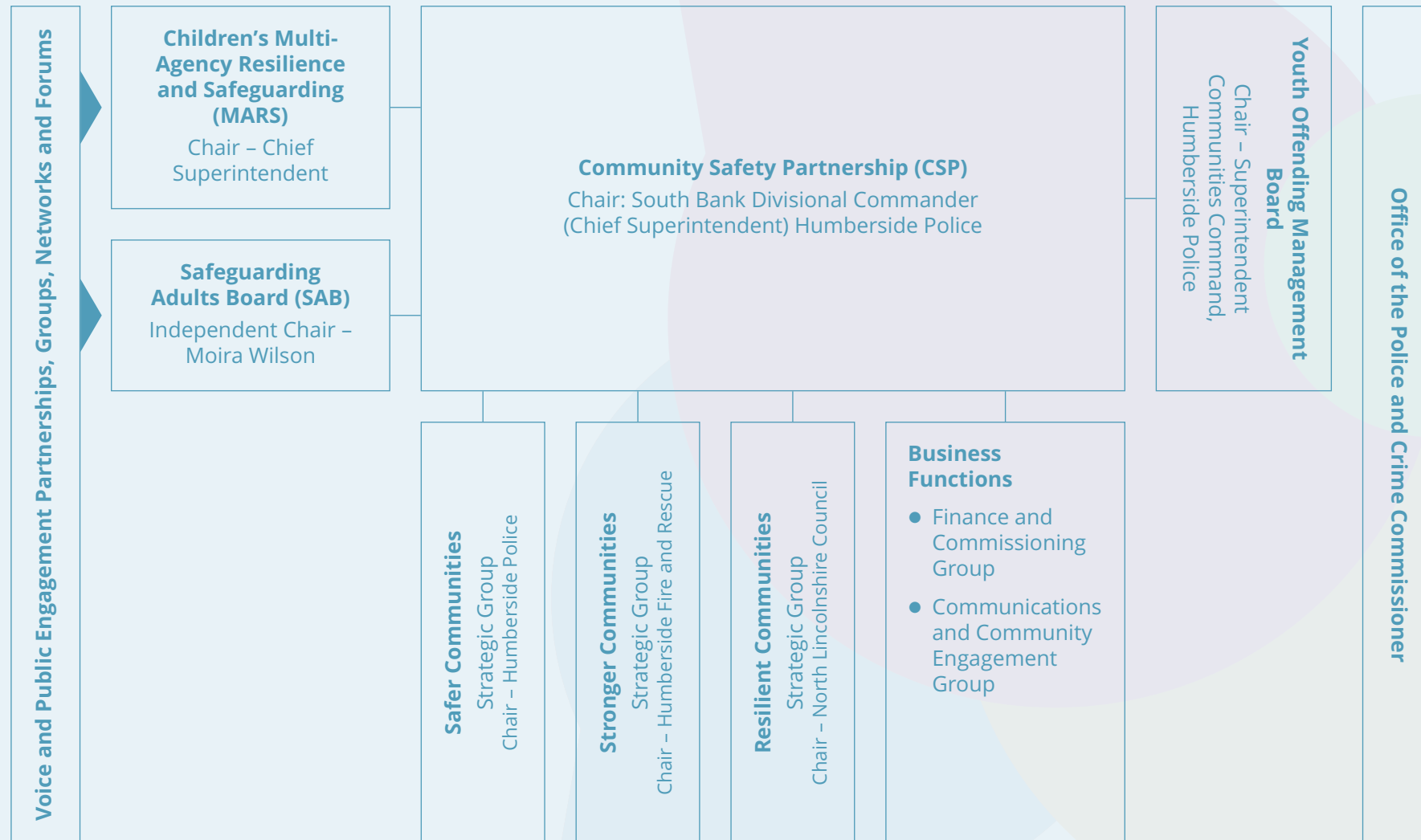
Using the Outcome Based Accountability approach, progress against identified actions will be monitored by the Community Safety Partnership.

This Partnership Plan is a rolling two year plan valid until 2020, though it will be reviewed and re-issued annually to reflect both national and local community safety priorities.

Scrutiny of this Partnership Plan will be undertaken by Local Authority Scrutiny Panel.



Partnership and Governance Arrangements



Community Safety Partnership Board

The Community Safety Partnership Board will collectively lead on the delivery of this Partnership Plan in North Lincolnshire. The underpinning groups and workstreams relating to Safe, Strong and Resilient Communities, will oversee the development of baselines and the development of the implementation of actions leading to safer, stronger and more resilient individuals and communities.

With the agenda being so broad, the work is also complemented by other delivery groups under the auspices of the Health and Wellbeing Board, the Local Safeguarding Children Board, the Safeguarding Adults Board and including key stakeholder and voice partnerships and forums. These include the Child Exploitation Strategic Group, the Anti-Social Behaviour Group, the Children and Young People's Partnership and the Domestic Violence Forum.

As referenced in Section 5 of the Crime and Disorder Act 1998, Community Safety Partnerships are a statutory partnership of organisations who work collaboratively together to set the strategic vision and deliver interventions to reduce crime and disorder in

their local area. The responsible authorities and members of the Community Safety Partnership are:

- Humberside Police
- North Lincolnshire Council
- North Lincolnshire Clinical Commissioning Group
- Community Rehabilitation Company
- National Probation Service
- Humberside Fire and Rescue Service

The responsible authorities can invite representatives from other agencies and organisations to attend the Community Safety Partnership Board and to assist with the delivery of this Partnership Plan e.g. Ongo, education settings and the voluntary and community sector.

The Community Safety Partnership Board has a detailed constitution which provides more clarity about the role, remit and functions of the partnership which ensures efficient, transparent and accountable decision making.

