

Public Footpath 91 Haxey  
Definitive Map Modification Order 2000

The County of Lincoln – Parts of Lindsey  
Definitive Map and Statement

North Lincolnshire Council

## Wildlife and Countryside Act 1981

### County of Lincoln – Parts of Lindsey (Isle of Axholme) Definitive Map and Statement Public Footpath 91, Haxey

This order is made by North Lincolnshire Council under section 53(2)(b) of the Wildlife and Countryside Act 1981 ("the Act") because it appears to the authority that the County of Lincoln – Parts of Lindsey (Isle of Axholme) Definitive Map and Statement require modification in consequence of the occurrence of an event specified in section 53(3)(a)(i), namely, a highway shown or required to be shown in the map and statement has been authorised to be diverted, of the Act.

The authority have consulted with every local authority whose area includes the land to which the order relates. The North Lincolnshire Council hereby order that:

1. For the purposes of this order the relevant date is 28<sup>th</sup>. April 2000.
2. The County of Lincoln – Parts of Lindsey (Isle of Axholme) Definitive Map and Statement shall be modified as described in Part 1 and Part 2 of the Schedule and shown on the map attached to the order.
3. This order shall take effect on the date it is made and may be cited as the "Public Footpath 91, Haxey, Definitive Map Modification Order 2000".

## SCHEDULE

### PART 1

#### Modification of Definitive Map

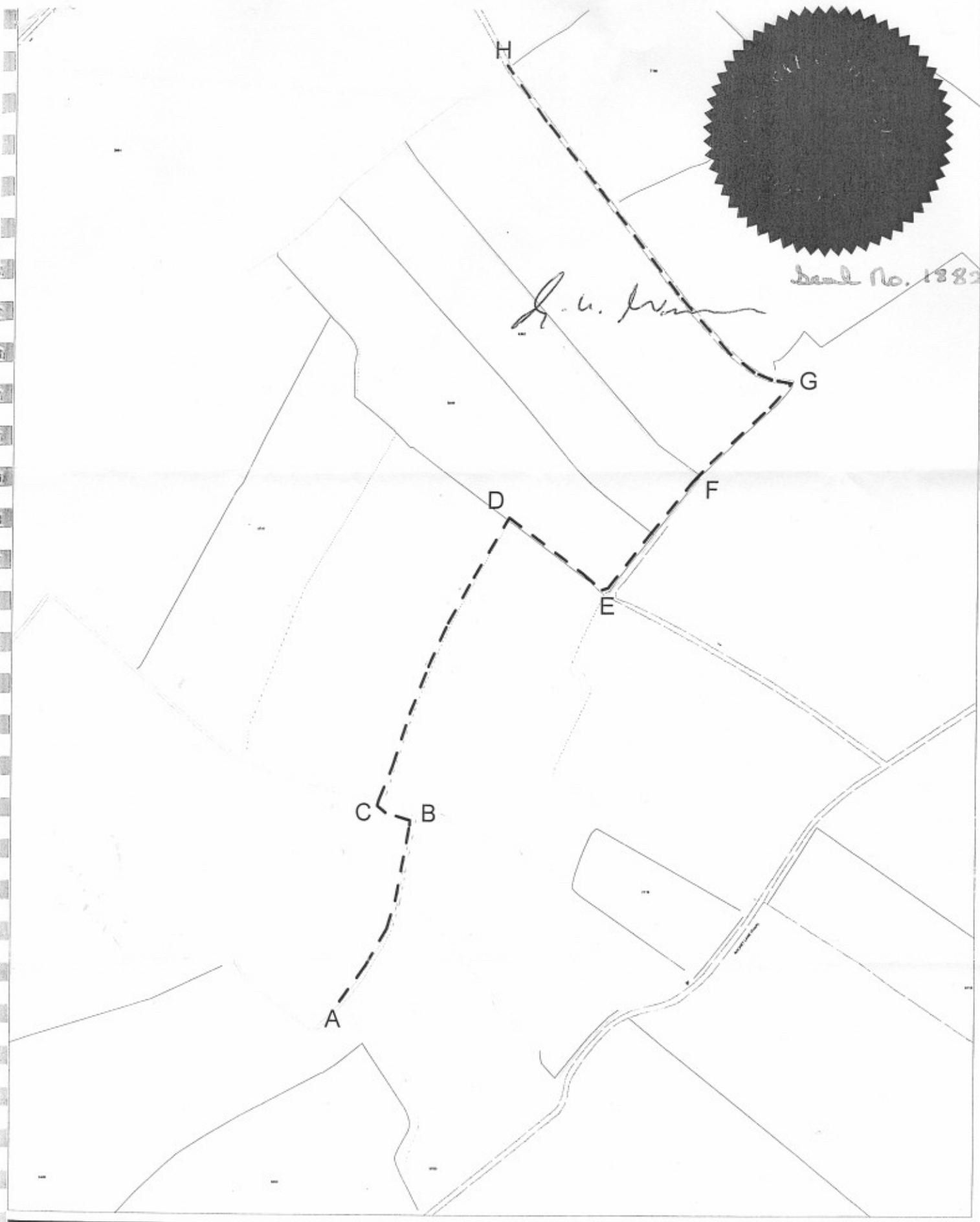
##### Description of path to be deleted

That part of Public Footpath 91 in the Parish of Haxey within the district and county of North Lincolnshire, having a length of approximately 630 metres and running from Point A in a generally northerly direction to Point H on the map.

##### Description of path to be added

A footpath having a minimum width of 1.5 metres and a total length of approximately 860 metres running in a generally northerly direction from Point A for 120 metres to Point B, then generally west for 20 metres to Point C, then generally north east for 200 metres to Point D, then south east for 75 metres to Point E, then north east for 175 metres to Point G, then 270 metres to Point H on the map.





Seal No. 1382

*J. G. Jones*

A

C

B

D

E

F

G

H



DIRECTORATE OF ENVIRONMENT  
AND PUBLIC PROTECTION  
CHURCH SQUARE HOUSE, SCUNTHORPE  
THIS MATERIAL IS BASED ON ORDNANCE SURVEY DIGITAL DATA USED  
WITH THE PERMISSION OF THE CONTROLLER OF HER MAJESTY'S STATIONERY OFFICE  
NORTH LINCOLNSHIRE COUNCIL 2000

C. CROWN COPYRIGHT RESERVED : LICENCE NO. LA09062L

Title: Haxey FP91

Scale: 1:3,000

