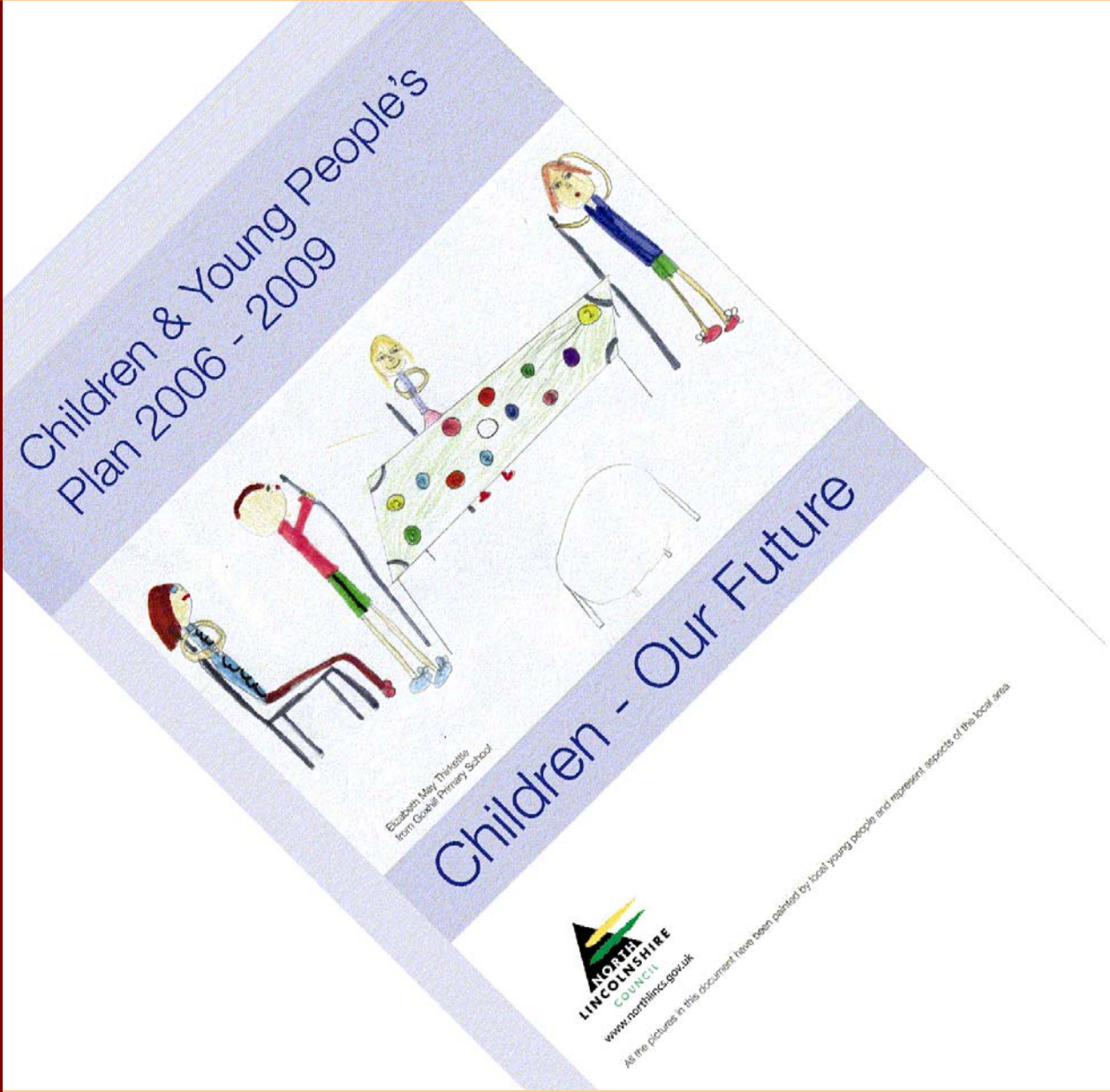


# Children- Our Future Two Years On



## 2008 Review Delivery and Action Plan

# Contents

Introduction	pg. 3
Actions for 2008/09	pg. 4
• Children's Trust Delivery Plan	pg. 6
• Higher level resources	pg. 7
• Be Healthy	pg. 8
• Stay Safe	pg. 12
• Enjoy and Achieve	pg. 15
• Make a Positive Contribution	pg. 19
• Achieve Economic Well-being	pg. 22
Appendix: Progress on delivering the Children and Young People's Plan 2006/2009	
• Section 1: North Lincolnshire's Children's Trust Partnership	
• Section 2: Progress 2007/08 on delivering Children and Young People's Plan Outcomes and Priorities	
• Section 3: Glossary	

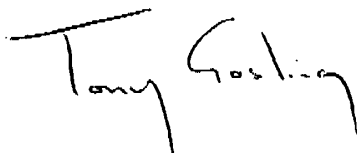
## Welcome

Welcome to our review of the second year of our Children and Young People's Plan for North Lincolnshire. Our plan belongs to the children, young people and their families in North Lincolnshire and covers all the services provided for them by the local authority, health services, schools and colleges, voluntary and community groups and many other local partners.

Since we first published our Children and Young People's Plan in 2006 we have been very proud of what we have achieved together. We have strong local partnerships and our plan sets out our shared vision for children and young people in North Lincolnshire. Our first year review highlighted significant progress in taking forward our priorities, and this, our second year review, shows that our good work continues and we are making a real difference for children and young people, and their families. We will build on this over the coming year and then review and revise our Children and Young People's Plan and publish the 2009-2012 edition.

All the local partner organisations who work with children and young people have been involved in this review along with the children and young people themselves. And we have made sure that children and young people who are most vulnerable, our children in care, have had the chance to say whether the plan has made a difference for them.

Children are our future. We hope you enjoy reading this review.



Cllr. Tony Gosling  
Children's Services Cabinet Member

# Introduction to the Children and Young People's Plan Second Year Review

We published our North Lincolnshire Children and Young People's Plan 2006-2009 (CYPP) in September 2006, after a lengthy period of development and consultation with children, young people, families, professionals, elected members, volunteers and community representatives. We reviewed it in 2007, again with wide consultation, and published a substantial first year review document.

The CYPP and the first year review explain how services for children and young people are organised and delivered in North Lincolnshire. They identify our main priorities, grouped under the five Every Child Matters outcomes and our priorities for the Children's Trust, and the review outlines our progress towards achieving them, setting priorities for action for the following year.

The CYPP second year review outlines our priority actions for 2008/09 and includes a summary of progress to date (June 2008) in a more detailed appendix (attached).

These priorities are shaping both individual agency thinking and planning and are acting as a platform for improved partnership working and integrated service delivery. They complement those requirements and priorities that are clearly defined within legislation and government guidance in relation to keeping children safe.

The review is also part of our response to our Joint Area Review (JAR) 2007/08, which confirmed that all services were good with many outstanding features.

Since publishing our Children and Young People's Plan we have undertaken a continuous review of our priorities and action plans, involving children and young people at all stages. Partners and children agree that our 2006/09 priorities remain relevant. For our vulnerable children these are:

- Strengthening partnership working
- Investing in integrated services to improve outcomes
- Developing support services to prevent family breakdown
- Improving performance management to include local indicators
- Developing opportunities for our vulnerable children and young people to be involved in decision making.

Children and young people continue to agree with us that the priorities in the Children and Young People's Plan are important to them. Children and young people like to be fit and healthy and value the activities that the council and its partners provide.

Peer mentors have been very well received in our schools and the evaluation has shown that they are helping to reduce the fear of bullying, confirmed by the emerging findings of our recent Adolescent Lifestyle Survey. Young people who are volunteering are finding that it helps them to feel good about themselves and empathise more with other young people. Membership of the United Kingdom Youth Parliament is very important to children and young people in North Lincolnshire and the council are working to help make this happen. However young people feel that we need to get smarter in terms of using information from consultation and they need more direct routes into council decision making.

Young people feel that they are labelled as trouble causers even though more adults than young people receive Anti-social Behaviour Orders (ASBO's). They welcome the positive activities to help them keep out of trouble, such as Street Talk and Street Sports, and want more say in how they are organised.

We intend to focus on our existing fifteen CYPP priorities until 2009 and then rewrite our CYPP for 2009/12. This review will also take account of significant new legislation and guidance, eg the Children's Plan December 2007, and the Children & Young Person's Bill 2008.

The government's Children's Plan signposts the future agenda, which builds on our current practice:

- More support for parents and families

- Supporting children to reach their potential
- Helping children enjoy their childhood as well as grow up prepared for adult life.
- Shaping services around children, young people and families, not professional boundaries
- Focusing on prevention and early intervention

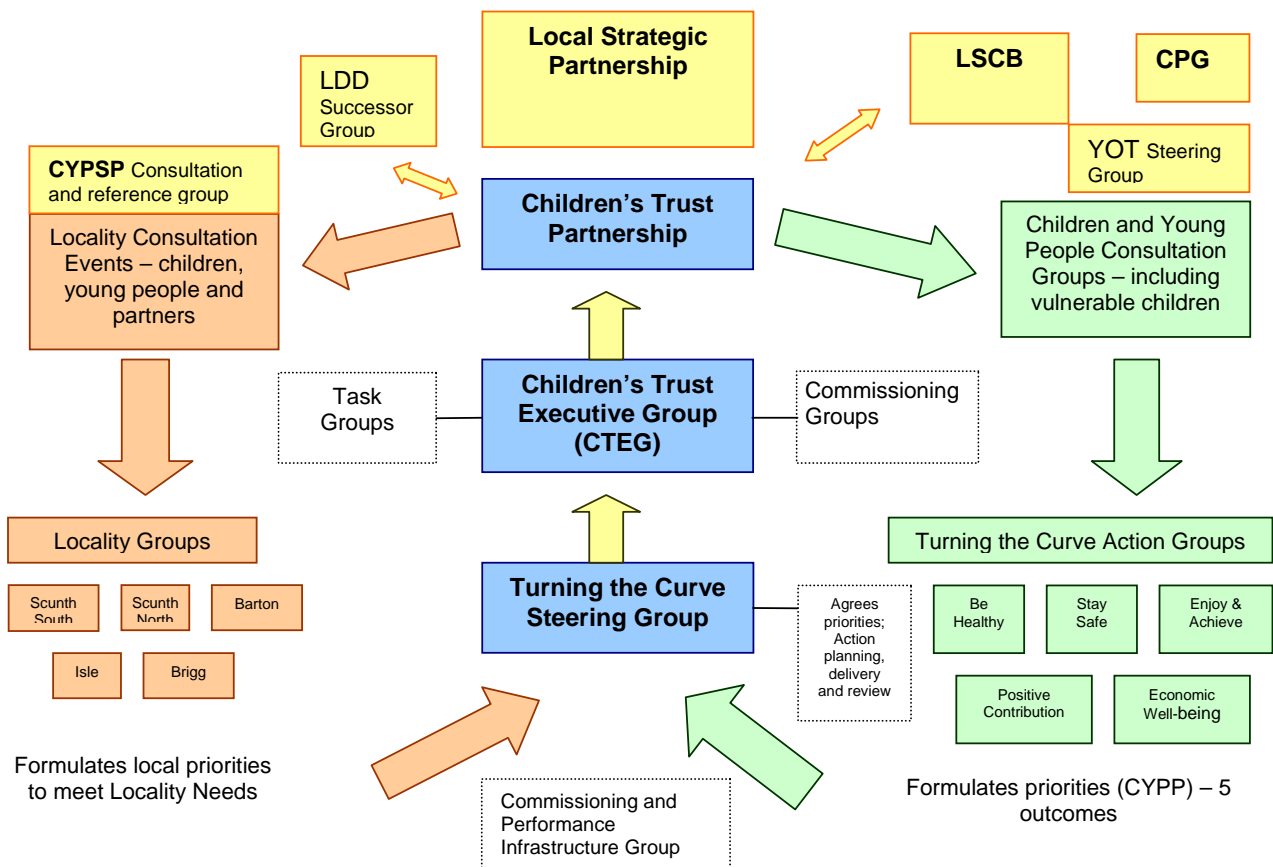
## Actions for 2008/09

### Children's Trust

We have revised our Children's Trust arrangements to reflect the integrated services agenda and the developing arrangements for tailoring more responsive services in localities. It reflects the key role of the Turning the Curve Groups in delivering the CYPP outcomes and shaping policy and development.

## Children's Trust Partnership

Framework for Strategic Planning; Priority Setting; Service Redesign and Review



Key:  
 CYPSP = Children and Young People's Strategic Partnership  
 LLD = Learning Difficulties and Disabilities  
 LSCB = Local Safeguarding Children Board  
 CPG = Corporate Parenting Group  
 YOT = Youth Offending Team

## What do we need to do next?

The Children's Trust will continue to develop its core themes. These are:

- **Integrated governance and accountability.** The diagram above shows the reporting and accountability routes for the Children's Trust Partnership. Governance is to the Children's Trust Board and ultimately to the Local Strategic Partnership.
- **Integrated strategy, commissioning and performance.** A new Commissioning Plan will provide the necessary framework for effective single commissioning and joint commissioning activity for the coming year. The Plan will inform the Trust's commissioning and decommissioning decisions in line with the priorities of CYPP and this review. The plan will develop relationships identified in our Third Sector Strategy to bring a new more diverse market into being that will provide more choice and more flexibility of provision in North Lincolnshire.
- **Integrated processes.** Our integrated processes include our Common Assessment Framework (CAF), Children with Additional Needs Framework (CWAN), Children in Need (CIN), Information Sharing and Child Protection (CP) processes. These processes exist to provide clarity about access to services, ensure children and families get the help they need at the earliest point and reduce the need for repeating information for children and families. As a partnership, it strengthens our collective understanding and consistent application of thresholds for access to services.
- **Integrated frontline delivery.** We are working towards an Integrated Disability Service. We already have multi-agency substance misuse and CAMHS services. We have a multi-agency Teenage Pregnancy Partnership. We have an integrated approach to delivering Children's Centres and Extended Provision and are developing locality-based services that will integrate practitioners around Children's Centres, Extended Provision and schools. We ensure good coordination of services between organisations and agencies through our integrated processes.
- **Participation of children, young people and families.** Children and young people have had a key role in the development and review of our CYPP. We are working towards ensuring children and young people in North Lincolnshire are able to influence all decisions and services, which affect them. We have committed to ensuring that "by 2008 no policies or strategies will be agreed without the participation of children, young people and their families" (North Lincolnshire Participation Plan).
- **Workforce Strategy.** The Children's Trust is charged with developing a common set of principles and practices to direct the work of all people working with children, young people and their families in North Lincolnshire. To this end we have created the 'One Team' Children's Workforce Strategy for North Lincolnshire, which went to the Children's Board in March 2008 and includes a 10-year vision, common induction, training and working principles. All local organisations will be working towards the commitments in the strategy.
- **Sharing Resources.** We are developing aligned budget arrangements to support integrated service delivery and aligning of funding under the Local Area Agreement to deliver the LAA priorities for children and young people will also provide the next stage in shared funding for partnership working. We will be co-locating staff in localities where possible to make best use of shared resources and to build an integrated team ethos.

## Children's Trust Delivery Plan 2008/09

Theme	Action	Milestones	Responsibility
Integrated Governance	Redefine the leadership and governance role of the Children's Trust Partnership and the delegated responsibilities of the Children's Trust Executive Group (CTEG).	Sept 08	Deputy Chief Exec (DCS)
	Clarify the role of Children and Young People's Strategic Partnership (CYPPSP) as a partnership consultation and reference group.	Sept 08	Deputy Chief Exec (DCS)
	Fully implement locality working supported by local partnership arrangements.	Dec 08	Service Director: Learning, Schools and Communities
	Continued development of the Disabilities strategic group/service board and existing work streams to ensure there are clearly accountable action groups.	Sept 08	Service Director: Learning, Schools and Communities
Integrated Planning	Completion of the CYPP Review for 2008/09 and submission to central government	June 2008	Head of Commissioning and Performance, CSP
	"Plan for the Plan" activity in 2008/09 in readiness for a new three year CYPP for 2009/12.	Ongoing to June 2009	Head of Commissioning and Performance, CSP
	Develop and deliver the Children's Trust Partnership Commissioning Plan.	August 2008	Head of Commissioning and Performance, CSP
	Develop and deliver the Children's Trust Partnership Performance Framework; including development of a locality performance framework to identify the impact of new arrangements for service delivery and collaborative working.	March 2009	Head of Commissioning and Performance Manager, CSP
	Develop and deliver the Children's Trust Partnership Workforce Strategy	March 2009	Children's Trust Partnership Workforce Group
	Commissioning review and develop the range of CAMHS services to ensure that government targets on the development of a comprehensive CAMHS service are met by 2010.	December 2008	Head of Commissioning and Performance (PCT) CTEG
Integrated Systems	Establish integrated systems and processes task group to look at increasing take up of CAF/CWAN processes, explore the possibilities of integrated duty functions and wider development of integrated systems/processes.	Sept 2008	Service Director: Children, Strategy and Partnerships
Integrated Teams	Ensure our Integrated Service for Children with Disabilities is fully functional by December 2008.	Dec 2008	Service Director: Learning, Schools and Communities
Participation and Consultation	Roll out the participation strategy, implement progress reporting framework to demonstrate impact of consultations and enhance e-consultations and web based debate through further development of Every North Lincolnshire Child Matters website.	Dec 2008	Head of Integrated Youth Support Services
	Develop new methods of consultation with children and families affected by disability in line with the requirements of Every Disabled Child Matters and Aiming High for Disabled Children.	March 2009	Head of Integrated Youth Support Services
Workforce	The 'One Team' Children's Workforce Strategy will be ratified by each agency represented on the Children's Partnership Board and they will commit to the 10 year vision	Autumn 2008.	Children's Trust Partnership Workforce Group
	The development of a Workforce Business Plan/ Action Plan led by the Children's Trust Partnership Workforce Group	December 2008	Children's Trust Partnership Workforce Group
	Develop Contact Point (the national database for all children and young people), in particular the workforce resource in schools and other establishments who will manage the data and information flow.	Local Authority Organisation Accreditation – February 2008	Children's Trust Partnership Workforce Group Head of Resources
Sharing Resources	Action plan to deliver better alignment of partnership funding arrangements including effective use of Area Based Grants and joint commissioning and lead commissioning arrangements under formal pooling arrangements.	December 2008	CTEG/Children's Trust Partnership

## High level resources to support the delivery of better outcomes for children, young people and families

This is 'work in progress'. We are working towards identifying the wide variety of funding and in-kind contributions that support children, young people and their families to achieve the 5 ECM Outcomes, particularly in relation to the Third Sector. We intend to build on this over the coming year in preparation for the CYPP 2009/12, which will include a more robust and comprehensive set of resources information to support the new set of priorities.

CYPP Priorities	Resources managed by the local authority £	Resources managed by health £	Resources managed by other partners £
<b>Be Healthy</b>		<b>07/08 figures + 2.5%</b>	
1. Reduce obesity and promote physical activity and healthy eating ( <i>school meals &amp; health visiting</i> )	385,000	2,181,000	
2. Reduce the use and effects of alcohol, drugs and smoking ( <i>substance misuse</i> )	211,000		
3. Promote emotional and mental well-being ( <i>CAMHS and mental health</i> )	827,000	1,228,000	
4. Teenage Pregnancy	169,000		
5. Children in Need, In Care and Leaving Care <i>Also see CAMHS above</i>	35,000	51,000	
6. Children with disabilities and learning disabilities	663,000	542,000	
<b>Total Be Healthy</b>	<b>2,290,000</b>	<b>4,002,000</b>	
<b>Stay Safe</b>			
1. Reduce the incidence and fear of bullying ( <i>Anti-bullying co-ordinator</i> )	30,000		
2. Reduce the harm caused by domestic violence	64,000		26,000
3. Keep children and young people safe from accidents in the home and on the road ( <i>including school transport and road safety</i> )	3,077,000		223,000
4. Children in Need, In Care and Leaving Care	7,870,000	168,000	
5. Children with disabilities and learning disabilities ( <i>including specialist school transport</i> )	842,000	87,000	
6. Local Safeguarding Board	85,000	19,000	37,000
<b>Total Stay Safe</b>	<b>11,968,000</b>	<b>274,000</b>	<b>286,000</b>
<b>Enjoy and Achieve</b>			
1. Help children and young people improve their attainment through education ( <i>including Children's Centres</i> )	3,098,000	739,000	
2. Raise aspiration and celebrate achievement			
3. Make sure all young people have an equal chance to enjoy and achieve			
4. Children in Need, In Care and Leaving Care	252,000		
5. Children with disabilities and learning disabilities	5,902,000		
Dedicated schools grant	83,000,000		
BSF	8,000,000		
<b>Total Enjoy and Achieve</b>	<b>100,252,000</b>	<b>739,000</b>	
<b>Positive Contribution</b>			
1. Raise self-esteem and build confidence ( <i>Youth Service &amp; Children's Fund</i> )	1,425,000		
2. Ensure children and young people are involved in decisions that affect them			
3. Reduce the incidents of children and young people offending and acts of anti-social behaviour ( <i>including YOT &amp; Youth Court</i> )	1,101,000	45,000	100,000
4. Children in Need, In Care and Leaving Care ( <i>participation &amp; advocacy</i> )	272,000		
5. Children with disabilities and learning disabilities ( <i>See Be Healthy and Enjoy and Achieve above</i> )			
<b>Total Positive Contribution</b>	<b>2,798,000</b>	<b>45,000</b>	<b>100,000</b>
<b>Economic Well-being</b>			
1. Enable young people to continue their education, training and get jobs in North Lincolnshire ( <i>Connexions and 14-19 partnership</i> )	2,435,000		
2. Ensure suitable affordable, accessible and appropriate accommodation for young people	1,028,000		
3. Support young people to get a good start in life ( <i>Clothing support &amp; Maternity services</i> )	38,000	4,953,000	
4. Children in Need, In Care and Leaving Care and Young Carers ( <i>including Supporting People</i> )	1,205,000		
5. Children with disabilities and learning disabilities ( <i>Specialist hospital services NICU &amp; SCBU &amp; PICU</i> )	141,000	2,241,000	
<b>Total Economic Well-being</b>	<b>4,847,000</b>	<b>7,194,000</b>	
<b>Sub Total 5 ECM Outcomes</b>	<b>122,155,000</b>	<b>12,254,000</b>	<b>386,000</b>
Other services including Service Management	7,632,000	7,429,000	
<b>Grand Total</b>	<b>129,787,000</b>	<b>19,683,000</b>	<b>386,000</b>

## Be Healthy Action Plan 2008/09

Priority	Action	Milestones	Targets	Responsibility
1: To reduce obesity and promote physical activity and healthy eating	Implementation of Active Choices, Active Futures Strategy	Quarterly progress reports to the Local Strategic Partnership and Elected Members	Achieve Active Choices, Active Futures Strategy targets 2008/09 (see ACAF action plan).  NI 57 Children and young people's participation in high-quality PE and sport DCSF DSO ( <i>New P!</i> )	Maureen Moore, ACAF Steering Group
	Evaluate obesity information to see impact of initiatives and identify ways to target areas of most need  Agree jointly commissioned initiatives, which contribute to preventing Obesity NI 56.  Analyse North Lincs data and identify ways to target areas of most need	Complete the quarterly review of obesity information to assess impact.  Complete the agreement and report to the Be Healthy Turning the Curve Group by August 2008  Complete analysis and report the Be Healthy TtC Group by August 2008  Local Parenting with You sessions to deliver 8 parenting groups by March 2009 which will educate against obesity	Percentage of eligible children BMI measured Baseline – 84% Target 2008/09 - 85%  **LAA - NI 55 Obesity among primary school age children in Reception Year DCSF DSO Baseline 06/07 prevalence rate – 11.1%; 08/09 Target 11%  NI 56 Obesity among primary school age children in Year 6 DCSF DSO 2006/07 Overweight – 14.8%, Obese 16.7%	Karen Rhodes, Be Healthy TtC Group
	Improve BMI measurement in Choices clinics	Report on the progress of BMI measurement in Choices Clinics. Complete report to the Obesity Strategy Group with the % achieved	50% Choices consultations to include BMI measurement in 2008/09	Andrew Furber, Public Health Department NLPCT
	Continue to increase breastfeeding initiation rates  To increase the duration of women breastfeeding their infants	Review of breastfeeding strategy by September 08 & development of Action plan Dec 08  Consultation with parents to define what impacts on their decision to breastfeed infants locally – March 2009.  To develop a local plan to achieve UNICEF breastfeeding Friendly Status by December 2008  To develop a social marketing approach to engaging the local population and influence their decision making by March 2009	Breastfeeding initiation rate increases from 56% to 58% (ie. 2% increase linked to Vital Signs)  NI 53 Prevalence of breastfeeding at 6 – 8 weeks from birth PSA 12 Baseline - 35.3%; 08/09 Target - 35%  Train 5 voluntary/community groups to provide breast feeding support to new parents within the home – March 2009	Wendy Brownbridge, Breast Feeding Strategy Implementation Group

Priority	Action	Milestones	Targets	Responsibility
2: To reduce the use and effects of alcohol and drugs and smoking	Launch and implement the Alcohol Harm Reduction Strategy.  Re-establish substance misuse group.  Formulate action plan to deliver substance misuse strategy in 08/09	Consultation of the Alcohol Harm Reduction Strategy by April 2008.  Completion and launch the strategy in July 2008  Group re-established by September 2008  Substance Misuse Action Plan in place August 2008	Achieve Alcohol Harm Reduction Strategy targets for 08/09  NI 115 Substance misuse by young people PSA 14 ( <i>new PI</i> )	Stuart Minto, Safer Neighbourhoods Partnership  Andrew Furber, Public Health Department NLPCT  Stuart Minto, Safer Neighbourhoods Partnership
	Train Health Visitors & Social Workers in brief intervention to support parents and young people to stop smoking  Further develop the smoking cessation programme for young people via Choices. Secondary school Choices will deliver stop smoking services	Training programme for professionals to run in 2008  Training for professionals complete by October 2008  Stop smoking services established in Choices clinics by December 2008	Run smoking cessation pilot in one secondary school by Dec 08  Each secondary school to have a Choices clinic offering smoking cessation services by March 2009	Andrew Furber, Public Health Department NLPCT
	Support the smoke free homes programme, providing information and encouragement for people to participate through Children Centres and schools (awaiting funding)	Seek ways to implement smoke free homes programme following pilot area project by March 09.		Tobacco Alliance  Andrew Furber, Public Health in partnership with Healthy Schools Partnership
3: To promote emotional and mental well-being	Complete and launch the multi-agency CAMHS training and quality assurance framework to support practitioners	Complete and launch the CAMHS multi-agency training plan by July 2008	All agencies signed up to the CAHMS training and quality assurance framework	Angela Waddingham, CAMHS and Emotional Well-being Steering Group
	A CAMHS coordinator to be appointed to continue development of comprehensive CAHMS in North Lincolnshire	CAMHS Coordinator job description to be agreed by end June 08	CAMHS coordinator appointed by Sept 08	Angela Waddingham, CAMHS and Emotional Well-being Steering Group
	Review the planning framework to deliver emotional well-being services including CAMHS	Planning framework to be reviewed by end September 2008	Framework in place by October 08  NI 51 Effectiveness of child and adolescent mental health (CAMHS) services DCSF DSO ( <i>new PI</i> )	Children's Trust Executive Group (CTEG)
	Implement the single point of entry pathway and improve the 24 hour, 7 days a week access to CAMHS services including vulnerable groups and 16 – 18 year olds	Develop an Action Plan for implementing the single point of entry for CAMHS by July 2008	Single point entry pathway to be available by March 2009  24 hour access to CAMHS to be improved by March 2009	Angela Waddingham, CAMHS and Emotional Well-being Steering Group

Priority	Action	Milestones	Targets	Responsibility
4: Teenage Pregnancy/ Sexual Health	Continue roll out Choices Clinics through Children's Centres and Extended Schools maintaining L2 STI Screening and Treatment Services in Choices and extend service provision beyond 2 sessions per week.	Roll out of Choices clinics complete by March 2009	L2 STI Screening and Treatment Services extended to 5 sessions per week by January 2009  NI 112 Under 18 conception rate PSA 14; Baseline – 53.9 per 1000 pop; 2008/09 Target – 38.8 per 1000	Sue May, NLPCT & Lynne Goodall, Teenage Pregnancy Partnership
	Continue to market LARC methods, using a social norms approach. With forward plans in place to target: postpartum women; men; & young people	Marketing campaign developed and implemented by September 2008  Forward plans are in place in place by September 2008		Sue May, NLPCT & Lynne Goodall, Teenage Pregnancy Partnership
	Place COAST worker into Choices to increase screening volumes in 08/09	COAST workers to be fully trained and based in Choices clinics by July 2008	NI 113 Prevalence of Chlamydia in under 20 year olds DCSF DSO ( <i>new PI</i> )  17% increase Chlamydia in screening of 16-24 year olds in 2008/09	Andrew Furber, Public Health in partnership with COAST
CYPP Priority Group – Children in care and care leavers	Specific targeted work with CIC to reduce the effects of alcohol, drugs and smoking through a choices clinic and the children in care support centre	Children in Care Substance Misuse Action Plan in place by July 2008	Targeted prevention work to educate young people to make informed choice and to inform carers and staff. Information workshops to be held in August 2008.  NI 115 Substance misuse by young people PSA 14 ( <i>new PI</i> )	Healthy Action Group (reporting to the CIC Strategy Steering Group).
	Assess the CAHMS screening pilot and implement the longer term programme accordingly	Screening pilot to be assessed by May 2008  Action plan for the longer programme complete by July 2008	All CICs and care leavers to have access to the screening programme.  NI 58 Emotional and behavioral health of children in care DCSF DSO ( <i>new PI</i> )	Healthy Action Group (reporting to the CIC Strategy Steering Group).
	Develop indicators to assess impact of work to reduce the rates of Teenage Pregnancy (for Children in Care/Care Leavers)	Indicator developed by July 2008	LAA -NI 112 Under 18 conception rate PSA 14  Baseline – 53.9 per 1000 pop  2008/09 Target – 38.8 per 1000	Healthy Action Group (reporting to the CIC Strategy Steering Group).  Teenage Pregnancy Partnership
CYPP Priority Group: Disabled children and those with learning	Reduce waiting times for health services, including CAHMS, for children with learning difficulties and/or disabilities (JAR)	Report on reduction in CAMHs waiting times to the Be Healthy TtC Group in March 2009	Comply with DOH directions on waiting times  NI 51 Effectiveness of child and adolescent mental health (CAMHs) services DCSF DSO ( <i>new PI</i> )	Angela Waddingham, CAMHS and Emotional Well-being Steering Group

Priority	Action	Milestones	Targets	Responsibility
learning difficulties	Develop an autism strategy	Multi-agency Autism Steering Group established by August 2008  Strategy agreed and implemented by March 2009	LAA - NI 54 Services for disabled children PSA 12  Baseline – 56% (proxy measure)  2008/09 Target – 62%	Integrated Disability Service Task Group
	Establish a specific LDD position statement for specialist CAMHS	Position statement agreed by November 2008	Position statement in place March 09	Angela Waddingham, CAMHS and Emotional Well-being Steering Group
	Ensure the development of services for children and young people with LDD is in line with the expectations of the Aiming High for Disabled Children.	Progress report on the implementation of the Aiming High for Disabled Children Programme to be submitted to the Be Healthy TtC Group in March 2009	LAA -NI 54 Services for disabled children PSA 12 Baseline – 56% (proxy measure) 2008/09 Target – 62%	Mick Gibbs, Head of Children and Family Services

This Action Plan addresses the LAA priorities and JAR recommendations below:

#### Local Area Agreement Priorities

- Obesity NI 055 – Obesity in reception year. [Proxy for NI 056 (obesity in year 6)] DCSF DSO
- Substance Misuse - NI 115 Substance misuse by young people PSA 14 (*new PI from TellUs2 survey*)
- Teenage Pregnancy - NI 112 Under 18 conception rate PSA 14

#### JAR Recommendations

- Reduce waiting times for health services, including CAHMS, for children with learning difficulties and/or disabilities
- Strengthen the work of the CAMHS strategy
- Substance Misuse
  - Ensure key plans and strategies contain targets and outcomes that can be measured for impact including the Substance Misuse strategy.
  - Improve the identification of the specific substance misuse needs of those 16 and above
  - Ensure substance misuse referrals are made when required by the YOT

\*\* Please note that in the Outcome Action Plans we have identified the performance indicators (PIs) in the National Indicator Set as 'NI' and those agreed with Government Office Yorkshire and Humber as local priorities within our Local Area Agreement also have the designation 'LAA'. We have provided baselines and 2008/09 targets where possible and those NIs that are new PIs and have no baseline or target information available as yet have the designation 'New PI'.

## Stay Safe Action Plan 2008/09

Priority	Action	Milestones	Targets	Responsibility
1. Reduce the incidence and fear of bullying	Primary schools continue to roll out of the playground pals/buddy schemes  Secondary schools continue the roll out of the peer mentoring scheme	Buddying and peer mentoring schemes to be rolled out throughout 2008/09	75% of primary schools to have playground pals/buddy schemes established by the end of the 2008 school year.  100% of secondary schools to have peer mentoring schemes established by the end of the 2008 school year	Lynne Goodall, Anti-Bullying Strategy Group
	Develop a coordinated partnership training programme on bullying awareness through the LSCB training plan.	Training programme in place for 1 May 2008. Implement throughout 2008/09	NI 69 Children who have experienced bullying DCSF DSO ( <i>New PI</i> )	Katie Newborn, LSCB
	Improve data analysis with regard to the impact of the anti-bullying strategy (JAR recommendation).	First anti-bullying data report submitted to the Stay Safe TtC Group by March 2009		Lynne Goodall, Anti-bullying Strategy Group
2. Reduce the harm caused by domestic violence	Further detailed work needs to be undertaken with a number of agencies to ensure that DV data is recorded at the point of referral, in order that robust information can be collated.	Robust data collection methods established by end of March 2009	NI 32 Repeat incidents of domestic violence PSA 23  Baseline 2007/08 (11/30) - 36.6%  NI 65 Children becoming the subject of a Child Protection Plan for a second or subsequent time	Dianna Broadmeadow, The Safer Neighbourhoods Officer-Domestic Violence & LSCB
	Review the Domestic Violence strategy for North Lincolnshire ensuring that children and young people are included in every aspect.	Progress report submitted to the Stay Safe TtC Group by September 2008	Local indicator to measure where DV is the primary concern	Dianna Broadmeadow , The Safer Neighbourhoods Officer-Domestic Violence
	Undertake data analysis of all cases referred to the MARAC, highlighting the involvement of children and young people	Report completed and submitted to the Stay Safe TtC Group by December 2008	Local targets ; <ul style="list-style-type: none"><li>Reduce repeat referrals to CIN where DV is primary concern</li></ul>	Dianna Broadmeadow , The Safer Neighbourhoods Officer-Domestic Violence
	Identify and target those areas where there is a specific need for knowledge and awareness, e.g. Midwifery	Develop a variety of training sessions and range of awareness raising materials aimed at professionals by March 2009	Increase % of children and young people who say they feel safe at home (ALS/TellUs survey)	Dianna Broadmeadow , The Safer Neighbourhoods Officer-Domestic Violence

Priority	Action	Milestones	Targets	Responsibility
3. Keep children and young people safe from accidents in the home and on the road	Improve the collection of data on the range of accidents that occur in the home.	Robust data collection procedures in place by March 2009	Develop local target based on improved data collection March 2009	Mick Gibbs, Stay Safe Turning the Curve Group
	Provide good quality theatre in education productions that address in-car safety issues within KS2 and KS3	Achieve funding by September 2008	Deliver training to 10 primary and 10 secondary schools by end March 2009	Richard Hall, Road Safety Partnership
	Resource transition and induction work in Years 6 and 7 that address the new road safety challenges and circumstances that children face as they move to secondary schools.	Provide to all Year 6 children in June 2008.	Establish in four secondary schools by October 2008  NI 48 Children killed or seriously injured in road traffic accidents DfT DSO  Baseline 2007 - 13	Richard Hall, Road Safety Partnership
	Deliver the KS4 project to Year 11 students in North Lincolnshire schools.		Deliver to three schools by December 2008 and six schools by March 2009.	Richard Hall, Road Safety Partnership
CYPP Priority Group – Children in Care and Care Leavers	Review and improve internet security for children in care	Review and action plan submitted to the Stay Safe TtC Group by October 2008	Targets to be agreed in action plan	Mick Gibbs, Head of Children and Family Services
	Extend the range of foster carers and implement the national standards	Action Plan implementing the national standard agreed by October 2008	Targets to be agreed in action plan	Mick Gibbs, Head of Children and Family Services
	Support and train children/young people in care to be involved in the safe recruitment of staff	Training programme agreed and established by October 2008	All recruitment of staff within Children & Family Services will involve children and young people by March 2009	Dave Basker, Head of Safeguarding and Practice
	Establish the children in care council as the key involvement and participation route	Children in Care Council full established by October 2008	All CIC/ Care leavers are aware of and contributing to the CIC Council by March 2009	Dave Basker, Positive Contribution Action Group
CYPP Priority Group – Disabled Children and those with Learning Difficulties	Establish the Integrated Disability Service	Establish the Integrated Disability Strategy by March 2009	LAA - NI 54 Services for disabled children PSA 12  Baseline – 56% (proxy measure)  08/09 Target – 62%	Children's Trust Partnership
	Implement Aiming High for disabled children across partnerships	Progress report on the implementation of the Aiming High for Disabled Children submitted the Stay Safe TtC Group by March 2009	Report submitted March 2009	Mick Gibbs, Head of Children and Family Services

Priority	Action	Milestones	Targets	Responsibility
	Extend short breaks and direct payments <i>(assuming successful draw-down of grant funding)</i>	Regular progress reports on developing 'readiness for short breaks' to the Aiming High Steering Group	Have everything in place to secure funding for three year investment in short breaks by March 2009	Mick Gibbs, Head of Children and Family Services
	Ensure children and young people with LDD are specifically targeted to ensure they are protected from accidents in the home and on the road, and bullying	Develop baseline information and service specific information to ensure we can identify and safeguard disabled children from: <ul style="list-style-type: none"> <li>• Accidents in the home</li> <li>• Accidents on the roads</li> <li>• Bullying</li> </ul> By December 2008	Develop local targets based on disaggregating baseline information by December 2008.	Mick Gibbs, Head of Children and Family Services

This Action Plan addresses the JAR recommendation below:

#### JAR Recommendations

- Improve data analysis with regards to the impact of the anti-bullying strategy

## Enjoy and Achieve Action Plan 2008/09

Priority	Action	Milestones	Targets	Responsibility
1. To help children and young people improve their attainment through education	Improve the 14–19 strategy, including joint planning and collaboration for post-16 students (JAR).	September 2008: 11 – 19 Strategy written	Targets contained in action plan to support the strategy September 2008	Ken Fielding, 14-19 Strategy Group
	Improve attainment of 16 year old students in English and mathematics (JAR).	September 2008 Support schools to ensure appropriate staffing of English and Maths departments.  January 2009 Ensure quality of leadership and teaching are at least satisfactory in all English and Maths departments.  August 2009 Improved attainment in English and Maths in North Lincolnshire	LAA  NI 75 Achievement of 5 or more A*-C grades at GCSE or equivalent including English and Maths (Threshold) PSA 10  Baseline – 41%; 08/09 Target – 54%	Jo Moxon, Head of Learning Services and School Improvement
	Improve the educational achievement of looked after children (JAR).	August 2009 Improved attainment for CYPP Priority Group Children in Care and Care Leavers	LAA  NI 99 Children in care reaching level 4 in English at Key Stage 2 PSA 11  Baseline 30%; 2008/09 - 57%  NI 100 Children in care reaching level 4 in Maths at Key Stage 2 PSA 11  Baseline 40%; Target 2008/09 – 57%  NI 101 Children in care achieving 5 A*-C GCSEs (or equivalent) at Key Stage 4 (including English and Maths) PSA 11  Baseline – 15%; 2008/09 Target – 9.1%	Jo Moxon, Head of Learning Services and School Improvement
	Ensure North Lincolnshire has no schools in failing categories	Ongoing 2008/09 Support for schools through School Improvement Partners (SIPs) and other school improvement officers	NI 89 Number of schools in special measures DCSF DSO ( <i>New PI</i> )	Jo Moxon, Head of Learning Services and School Improvement

Priority	Action	Milestones	Targets	Responsibility
2. To raise aspirations and celebrate achievements	Increase opportunities of young people to celebrate their achievements.	Increase opportunities for CYP to achieve through international contacts, e.g. July 2008 'China Now' project.	3 more schools linked by December 2008.  50 more pupils will have visited China by April 2009.	Jo Moxon, Head of Learning Services and School Improvement
	Develop a 'year of events' to promote and celebrate arts and culture across North Lincolnshire with a range of partner agencies.	October 2008 Care Leavers Event  September 2008 onwards. Encourage high achievers in education, sport and creative activities to inspire others e.g. through exhibitions, events and open evenings.	NI 110 Young people's participation in positive activities PSA 14 ( <i>New PI</i> )	Lynne Goodall, Head of Integrated Youth Support Services
	See Make a Positive Contribution Action Plan.			Lynne Goodall, Make a Positive Contribution Turning the Curve Group
3. To make sure all young people have an equal chance to enjoy and achieve	We need to increase the number of people with qualifications within the childcare sector, particularly in levels four, five and six.	Target practitioners completing Early Years Foundation Degree to encourage applications for EYP status.  Develop and implement EYP support strategy and network work support.  Focus graduate leader fund and EYFS training funding to support further development of practitioners achieving levels of 3, 4 and 5.  Increase the number of Centre leaders with NPQICL qualifications.  Continue to develop FE partnerships and consultancies to create a framework of professional pathways lined to EYFS.	Identify local targets for qualifications in childcare sector – September 2008	Sandra Simmons, Head of Community Services and Younger Children
	Address underperformance at Key Stage 3 for black and minority ethnic students (JAR)	September 2008 Ensure SIPs have detailed information and targets to enable SIPs to challenge individual schools.  May 2009 All children from minority ethnic groups have received appropriate support from the Diversity service.  August 2009 Key Stage 3 performance of black and minority ethnic students has improved.	NI 107 Key Stage 2 attainment for Black and minority ethnic groups DCSF DSO  NI 108 Key Stage 4 attainment for Black and minority ethnic groups DCSF DSO	Jo Moxon, Head of Learning Services and School Improvement

Priority	Action	Milestones	Targets	Responsibility
	Ensure the strategic evaluation of data and information in order to judge the impact of interventions, actions and resources on the overall progress and achievement of pupils with learning difficulties and/or disabilities (JAR).	September 2008 - Challenge schools about the educational progress of children with LDD including exclusion rates as part of the SIP process. January 2009 Set LA targets for children with LDD. May 2009 Implement National Inclusion Strategy.	September 2008- All SIP reports reflect the changes.  All schools will be trained by March 2009.	Jo Moxon, Head of Learning Services and School Improvement
CYPP Priority Group - Children in care and care leavers	Establish the role of the Virtual Headteacher	May 2008 Establish role. September 2008 Restructure education support for Children in Care. January 2009 – Use data analysis to target interventions for groups and individuals. May 2009 Challenge all schools through SIPs on progress of Children in Care - ongoing during 2008/09. July 2009 Support and training for all named Children in Care co-ordinators in schools has been provided.	LAA NI 101 Children in care achieving 5 A*-C GCSEs (or equivalent) at Key Stage 4 (including English and Maths) PSA 11  Baseline – 15%; 2008/09 Target – 9.1%	Jo Moxon, Head of Learning Services and School Improvement
	Ensure that adequate support is given to maintain positive engagement of children in care in school (APA)	September 2008 Improve arrangements to support Children in Care who are fixed term excluded. January 2009 Improve support for children in Care who are school refusers.	All children in care are positively engaged in education and receive their full education entitlement	Jo Moxon, Head of Learning Services and School Improvement  Mick Gibbs, Head of Children and Family Services
	Ensure that all children in care can access a range of leisure facilities and sporting opportunities	Ongoing during 2008/09	All children in care are positively engaged in leisure and sports activities	Pete Williams, Service Director Asset Management and Culture
CYPP Priority Group: Disabled children and	See Priority 3 – Make sure all young people have an equal chance to enjoy and achieve.			

Priority	Action	Milestones	Targets	Responsibility
those with learning difficulties	Ensure the strategic evaluation of data and information in order to judge the impact of interventions, actions and resources on the overall progress and achievement of pupils with learning difficulties and/or disabilities (JAR).	Evaluation complete and submitted to the Enjoy and Achieve TtC Group by March 2009  Separate targets set for pupils with LDD at schools and LA level maintained by SIPs.	Create local targets for LDD built on disaggregation of data	Jo Moxon, Head of Learning Services and School Improvement
	Set appropriate milestones, including closer monitoring of learning and disability issues in schools, to improve the progress young people across the range of identified difficulties and/or disabilities make in their learning. A sharper focus by School Improvement Partners (SIPs), and a better sharing of information about achievement across services.	Action plan in place by September 2008	Targets identified in action plan - September 2008  NI 104 The Special Educational Needs (SEN)/non-SEN gap – achieving Key Stage 2 English and Maths threshold DCSF DSO  NI 105 The Special Educational Needs (SEN)/non-SEN gap – achieving 5 A*-C GCSE inc. English and Maths DCSF DSO	Jo Moxon, Head of Learning Services and School Improvement

This Action Plan addresses the LAA priorities and JAR recommendations below:

### Local Area Agreement Priorities

To help children and young people improve their attainment through education – NI102 Closing achievement gap between pupils (FSM) and their peers achieving expected level at Key Stages 2 and 4

### JAR Recommendations

- Improve the attainment of 16 year old students in English and mathematics including raising the percentage of pupils achieving 5 or more A\* - C GCSEs with English and mathematics
- Improve educational attainment of looked after children
- Ensure strategic evaluation of data and information, to judge the impact of interventions, actions and resources on the overall progress and achievement of pupils with learning difficulties and/or disabilities

## Make a Positive Contribution Action Plan 2008/09

Priority	Action	Milestones	Targets	Responsibility
1. Raise self-esteem and build confidence so that young people respect themselves and others	Be pro-active in ensuring publicity campaigns portray young people in a positive way.	Set baseline information for the number of local press articles which report positively about young people – July 2008	Every Direct Magazine edition has a positive story or feature about children and young people	Lynne Goodall, Voice and Influence Group
	Use V-funding to set up a volunteering project in North Lincolnshire	Create sustainable volunteering opportunities in North Lincolnshire – progress report to MPC TheC Group, Sept 2009	NI 110 Young people's participation in positive activities PSA 14 ( <i>new PI</i> )	Lynne Goodall, Make a Positive Contribution Turning the Curve Group
	Implement the next phases of SEAL	SEAL programme is promoted in all schools	By 2008/09 80% of schools to have implemented the SEAL programme	Lynne Goodall, Make a Positive Contribution Turning the Curve Group
	Step change our support to young carers through review of current commissioned services	Review of commissioned services to support young carers completed December 2008.	Plan for step-change in place March 2009	Lynne Goodall, Make a Positive Contribution Turning the Curve Group
2. To ensure children and young people are involved in decisions that affect them	Strengthen the communication links between schools and the X-Press forum	Communication links well established by September 2008	Protocol to define and establish links in place by September 2008	Lynne Goodall, Voice and Influence Group
	Address UKYP membership for North Lincolnshire	Secure membership by the end of 2008	December 2008 NI 110 Young people's participation in positive activities PSA 14 ( <i>new PI</i> )	Lynne Goodall, Voice and Influence Group
	Ensure children and young people are fully involved in the development of the Children and Young Peoples Plan	Children and young people to be consulted on the new CYPP during 2008/09 and the new Plan published June 2009.	Children and young people's views are instrumental in shaping the CYPP 2009/12 – by June 2009	Lynne Goodall, Voice and Influence Group
3. Reduce incidents of children and young people offending and acts of anti-social	Improve the range of support to prevent children and young people becoming subject to ASBOs, including effective use of ABC's and YISP's	Action plan for improving support agreed and implemented by September 2008	Targets identified in action plan – September 2008	Lynne Goodall, YOT Steering Group

Priority	Action	Milestones	Targets	Responsibility
behaviour	Develop the work of the locality groups in providing targeted and effective diversionary activities and preventative projects to reduce offending and anti-social behaviour	Action Plan for diversionary activities and preventative projects established through locality groups by March 2009	Targets identified in action plan – March 2009	Lynne Goodall, Locality Groups/Turning the Curve Steering Group
	Ensure adequate assessments are completed by the Youth Offending Team of the risks associated with the offending behaviour posed by a small number of young people (JAR recommendation)	Achieve the YOT Action Plan milestones for 2008/09	Achieve the YOT Action Plan targets for 2008/09  NI 111 First time entrants to the Youth Justice System aged 10 – 17 PSA 14  Baseline 2007/08 – 326 (provisional)	Lynne Goodall, Youth Offending Team Steering Group
CYPP Priority Group – Children in care and care leavers	Continue to support the development of the Children in Care Council in partnership with 3 other Local Authorities	Progress report to MPC TtheC Group September 2008	All CIC/ Care Leavers are aware of and contributing to the CIC Council by March 2009	Dave Basker, Positive Contribution Action Group
	Increase the number of children and young people in care as volunteers.  Improve support to maintain volunteering activities for CIC/ care leavers.	Progress report to MPC TtheC Group September 2008	Target – increase by 10% from 2007/08 baseline - March 2009	Dave Basker, Positive Contribution Action Group
	Develop joint participation performance management meetings  Increase the number of children and young people in care who are involved in participation activities	Joint participation performance meeting established by September 2008  Progress report to Joint participation performance meeting November 2008 and MPC TtheC Group December 2008	NI 110 Young people's participation in positive activities PSA 14 ( <i>New PI</i> )  Target – increase by 10% from 2007/08 baseline - March 2009	Dave Basker, Positive Contribution Action Group
CYPP Priority Group – Disabled	Complete and implement the Disability Equality Scheme	Disability Equality Scheme agreed and launched by September 2008	Disability Equality Scheme implemented from September 2008	David Lea, Disability Strategy Group

Priority	Action	Milestones	Targets	Responsibility
children and those with learning difficulties	Establish a dedicated person to increase the take up of young people accessing play and leisure facilities	Dedicated person to increase the take up of young people with learning difficulties and/or disabilities in post by September 2008	LAA NI 54 Services for disabled children PSA 12 Baseline – 56% (proxy measure) 08/09 Target – 62%	David Lea, Disability Strategy Group

This Action Plan addresses the LAA priorities and JAR recommendations below:

#### Local Area Agreement Priorities

- Reduce the incidence of young people offending and acts of anti-social behaviour – NI 111 First time entrants to CJ system; NI 110 Young people's participation in positive activities (*new PJ*)

#### JAR Recommendations

- Improve open access work in youth services and develop and introduce an effective curriculum framework
- Provide adequate detached and outreach youth services
- Implement quality assurance system in youth services.
- Improve youth offending services to reduce the number of first time entrants to the youth justice system
- Improve YOT assessment of the risks of the offending behaviour (posed by a small number of young people).

## Achieve Economic Well-Being Action Plan 2008/09

Priority	Action	Milestones	Targets	Responsibility
1. To enable young people to continue their education, training and get jobs in North Lincolnshire	Complete a through needs analysis of the 14-19 strategy and monitor it appropriately (including incorporating vulnerable groups). (JAR Report)  14-19 fighting fund used to commission activity to address the needs of the area.	Needs analysis of the 14-19 Strategy completed by September 2008  14-19 fund plan - March 2009	Set targets based on needs analysis and resultant commissioning/ action plan	Ken Fielding, 14-19 Strategy Group  Learning and Skills Council (LSC)
	Increase the number of Apprenticeships to meet the 2013 learner entitlement and to improve achievement and progression rates in FE, WBL and E2E provision.	Number of apprenticeships showing significant increase by July 2009.	Increase FE success rates in line with the best in the Humber  Increase WBL framework completion rates to 68% by July 2009  Increase E2E positive destination rate to 50% in line with the Humber average	Learning and Skills Council (LSC)
	Maintain improvements in reducing number and percentage of 16-18 year old NEETs, including provision for vulnerable groups  <ul style="list-style-type: none"> <li>Increase the number of job opportunities available to NEET young people seeking work only</li> <li>Deliver the new ESF NEET fund via commissioning of activity to address the needs of the NEET group.</li> </ul>	Monitor the improvements in numbers of NEET and report to the Economic Well-being TtC Group by September 2008	NI 117 16 to 18 year olds who are not in education, training or employment (NEET) PSA 14  Baseline 7%  2008/09 Target – 6.4%  NI 90 Take up of 14-19 learning diplomas	Gill Brown, NEET Partnership Group
	Increase the number of job opportunities available to NEET young people seeking work only	Monitor the number and take up of job opportunities available to NEET young people seeking work. Report to the Economic Well-being TtC Group by December 2008	NI 91 Participation of 17 year-olds in education or training and NI 117 16 to 18 year olds NEET	Gill Brown, NEET Partnership Group
	Develop a “Gold Standard” for IAG	Gold standard for IAG developed	Gold Standard achieved by December 2008	Ken Fielding, 14-19 Partnership

Priority	Action	Milestones	Targets	Responsibility
2. Ensure sufficient affordable, accessible and appropriate accommodation for young people	Young Parents Scheme bid to be submitted to the housing corporation and then implemented if successful	Project to commence by March 2009	Project delivery targets to be agreed	Lynne Goodall, Teenage Pregnancy Partnership Board  Claire Startin, Young People's Housing Strategy Project Group
	Youth Build – two projects to be funded from housing corporation and to start in Ashby and Barton and then implemented if bid successful	Bids to be submitted early Summer 2008.	Project to commence Spring 2009	Claire Startin, Young People's Housing Strategy Project Group
	Provide better and more temporary accommodation, which specifically targets families with children or young people aged 0-19 – jointly between NLC and NLH	Action plan to develop better temporary accommodation in place by October 2008	Targets to be set in action plan – October 2008	Mark Sherwood, Young People's Housing Strategy Project Group
	Work with young people in schools on preparation for independence, including housing, through PSHE	School programme in place by September 2008		Jo Moxon, Head of Learning Services and School Improvement
	Measure the impact of tenancy support <ul style="list-style-type: none"> <li>Review supporting people services to young people prior to new contracts</li> <li>Review Allocations policy</li> </ul>	March 2009 New contracts in place April 2009 Report due Sept 2008	NI 156 Number of households living in Temporary Accommodation PSA 20	Claire Startin, Young People's Housing Strategy Project Group
3. To support young people to get a good start in life	Continue to develop short term accommodation for young people locally	Confirmation of regional housing board allocation 2008/11  Action plan for the development of short term accommodation in place by March 2009	NI 156 Number of households living in Temporary Accommodation PSA 20	Claire Startin, Young People's Housing Strategy Project Group
	Demonstrate increasing engagement of Job Centre Plus with Children's Centres with teenage/lone parents	Job Centre Staff supporting teenage/lone parents in Children's Centres by March 2009	NI 117 16 to 18 year olds who are not in education, training or employment (NEET) PSA 14 Baseline 7%; Target 08/09 6.4%	Sandra Simmons, Integrated Community Services Group

Priority	Action	Milestones	Targets	Responsibility
	Support young parents into ETE	Monitor young parents entering into education, training or employment and report findings to the Economic Well-Being TtC Group in September 2008	NI 117 16 to 18 year olds who are not in education, training or employment (NEET) PSA 14 Baseline 7%; Target 08/09 6.4%	Gill Brown, NEET Partnership Group/ Lynne Goodall, Teenage Pregnancy Partnership Board
CYPP Priority Group – Children in care and care leavers	<p>Ensure more Children in Care access education opportunities</p> <ul style="list-style-type: none"> <li>◆ Develop e-mentoring scheme in partnership with Brightside Trust and DCLG</li> <li>◆ Develop the pilot for a virtual support centre</li> <li>◆ Maintain links with Aim higher and universities that support Care Leavers</li> </ul>	<p>Monitoring report submitted to the Corporate Parenting Group by March 2009</p> <p>E-mentoring scheme in place March 2009</p> <p>Pilot virtual support centre commencing March 2009</p>	NI 148 Care leavers in employment, education or training PSA 16 Baseline 0.96; target 1.06	<p>Gill Brown, Economic Well-being Action Group</p> <p>Mick Gibbs, CIC Strategy Group</p>
	<p>Ensure care leavers are informed about their welfare rights.</p> <p>Develop training courses and information for Care Leavers on understanding welfare rights.</p>	<p>Training course on understanding welfare rights developed and to start running in September 2008</p> <p>Monitor uptake of welfare rights by care leavers and submit report to the Corporate Parenting Group in March 2009</p>	All care leavers are aware of their welfare rights and how to claim them – March 2009	<p>Gill Brown, Achieve Economic Well-being Turning the Curve Group</p> <p>Gill Brown, Economic Well-being Action Group</p>
	Ensure that there is provision in the 14-19 strategy for children in care, including support for children in care up to the age on 25	Revised 14-19 Strategy in place by March 2009	Targets set in 14-19 strategy action plan	Ken Fielding, 14-19 Strategy Group
CYPP Priority Group – Disabled children and those with learning difficulties	Create more opportunities for young people with learning difficulties and/or disabilities to access work-related learning and apprenticeships (JAR Report)	Monitoring report on the number of young people with LDD access work-related learning and apprenticeships to be submitted by March 2009	Increase opportunities by 10% by March 2009	David Lea, Disability Strategy Group

Priority	Action	Milestones	Targets	Responsibility
	Increase the number and percentage of 16-19 year old young people with LDD in EET and reduce the number and percentage in NEET and not known <ul style="list-style-type: none"> <li>• *LLDD activity commissioned using 'Investment for change'</li> <li>• LLDD development funding for 2008/09.</li> </ul> <p><i>*NB: LLDD = Learners with Learning Difficulties and Disabilities</i></p>	Monitor the percentage of 16-19 year old young people with LDD who are NEET and report to the Economic Well-Being TtC Group by March 2009  Development funding to address the needs of the area through specific projects by March 2009	Create local targets built on the disaggregation of LDD data	David Lea, Disability Strategy Group  Gill Brown, NEET Partnership Group  Learning and Skills Council (LSC)
	LLDD Pathfinder contracts will be extended to further meet the needs of the area.	September 2008 and March 2009	Targets set in contracts	Learning and Skills Council (LSC)
	Continue to implement the Transitions policy with additional training for staff	Report on progress made in March 2009	All young people eligible for transitions planning receive it	Mick Gibbs, Transitions Group

This Action Plan addresses the LAA priorities and JAR recommendations below:

#### Local Area Agreement Priorities

- To enable young people to continue their education, training and get jobs in North Lincolnshire – NI90 Take up of 14-19 learning diplomas; NI 91 Participation of 17 year-olds in education or training and NI 117 16 to 18 year olds NEET

#### JAR Recommendations

- Improve the 14-19 Strategy, including joint planning and collaboration for post 16 students
- Improve the opportunities available for young people with learning difficulties and/or disabilities to access work related learning and apprenticeships
- Reduce the proportion of young people not engaged in education, training and employment
- Increase the proportion of young people re-engaging in employment, education and training



# Children- Our Future

# Two Years On

## **Appendix: Children and Young People's Plan Review 2008**

### **Progress on delivering the Children and Young People's Plan 2006/2009**

Section 1: North Lincolnshire's Children's Trust Partnership

Section 2: Progress 2007/08 on delivering Children and Young People's Plan Outcomes and Priorities

Section 3: Glossary

## Section 1: North Lincolnshire's Children's Trust Partnership

### Children – Our future: Our Vision and Ambitions

We have promised to ensure **every child** in North Lincolnshire is healthy, safe, achieves their best, contributes positively and achieves economic well being by Council and Partners working together to **close the gap on disadvantage, raise aspirations and celebrate achievement**. To realise our vision in 2006/09, together we have agreed 15 priorities for action, a commitment to integrated working, delivered with children at the centre.

We have renewed our commitment to our objectives to ensure that North Lincolnshire is a place where all people can live and work together harmoniously (CYPP 2006/9).

In North Lincolnshire we will promote better outcomes for all children and young people by working together as a Children's Trust Partnership to:

- increase the resilience of children and communities
- to promote diversity
- to ensure safeguarding children is everyone's business
- to support children and families at the earliest point of need
- to prevent the need for children and families to become dependent on specialist help
- to ensure early intervention is accessed consistently across services

We organise our services on levels of need with:

- clear integrated processes to ensure fair and consistent access to services
- services that are integrated at the point of delivery for children and families

To ensure a 'common language' in describing our levels of need, (based on the Hardiker grid), they are now described as:

Universal level services – which will be locality based

Secondary services – which will be more focussed services, shared across localities

Targeted; and Specialist services, which are area based with clear locality links.

### What difference have we made?

In 2007/08, our CYPP review mechanisms have told us that our vision, ambitions and priorities for children are relevant and valid. We now have better understanding and clarity, as partners, about what we want for our children and young people. Our Joint Area Review (JAR) 2007/08, conducted in September and October 2007 and published in February 2008, found that:

"The management of services for children and young people is good, as is the service's capacity to improve further. The ambition of the council and its partners is good, with a strong and realistic vision set out in the Children and Young People's Plan (CYPP) and a clear timetable for progression towards becoming a Children's Trust." (JAR). Overall they found that services were good, with outstanding features and that outcomes for children and young people were good in our area.

### Integrated Governance and Accountability

### Progress on Actions 2007/08

We have established our Children's Trust Partnership (see diagram on 5). We have further developed

the governance and accountability arrangements to accommodate the evolving Localities agenda. We have strengthened the links to the Local Strategic Partnership and Local Safeguarding Children Board. We are clarifying the reporting arrangements for the various commissioning and task groups.

### **What difference have we made?**

The Children's Trust Partnership has developed from the existing Children's Board to be a fully functioning Children's Trust for 2008/09. We have a single focus for governance and accountability for partnership strategic planning, service development and service delivery for children and young people in North Lincolnshire. It works alongside the Local Safeguarding Children Board, receiving reports on safeguarding issues and contributing strategically to the overall safeguarding agenda.

The performance monitoring and review functions of the Turning the Curve Action Groups and the newly established Locality Groups are co-ordinated by the Turning the Curve Steering Group, which links via CTEG to the Children's Trust Partnership.

### **Integrated Strategy, Planning and Commissioning and Performance**

#### **Progress on Actions 2007/08**

The Joint Area Review and the Corporate Performance Assessment in 2007 recognised the strength and effectiveness of our partnership arrangements for children and young people. In particular they acknowledged that we had robust arrangements for joint strategic planning and performance management, while also making recommendations for SMARTer action planning.

### **What difference have we made?**

The success of the Children and Young People's Plan as an overarching strategic plan for children and young people has helped bring disparate organisations together, strengthened our partnerships and provided a focal point for other strategies and plans. The first year review enabled us to articulate our progress towards the outcomes, priorities and actions in the Plan and set our partnership priorities for the second year. The second year review is providing a similar opportunity for reflections and forward planning for the third year of our plan.

### **Integrated Processes**

#### **Progress on Actions 2007/08**

We have made substantial progress in training people from a wide variety of local agencies in CAF/CWAN/CIN. Over 500 professionals have benefited from this training different services organisations and agencies since 2006 and this has strengthened the role of Lead Professional.

### **What difference have we made?**

We have a collective understanding of the thresholds for access to various services, which has supported the integration of new projects and services. However, the expected "step change" of increased usage of CAF/CWAN has not yet materialised, despite the level of promotion and training. We will address this in our 2008/09 Children's Trust Delivery Plan and continue to promote CAF/CWAN with all partner organisation and support and encourage them to use these processes to provide early preventative and effective intervention where necessary.

## Integrated Front-line Services

### Progress on Actions 2007/08

The progress of development of integrated services for children with disabilities has been slower than anticipated. Partner support has taken time to establish but the state of readiness for Aiming High for Disabled Children (AHDC) is now improving and our capacity to draw down full AHDC government funding is encouraging.

The development of comprehensive CAMHS continues, and we are confident that we have the capacity to meet government targets for service development by 2010. However, this requires a step change in service improvement and better alignment of partnership support to the comprehensive CAMHS agenda.

Development of the Integrated Youth Offer is ahead of the government's schedule and innovative approaches to the development of Targeted Youth Support pull together services for defined "at risk" groups and integrate funding streams for substance misuse, teenage pregnancy, youth offending etc. We are committed to delivering the Aim Higher Strategy, bidding for Myplace funding linked to the strategic asset management plan to establish spaces specified in collaboration with young people.

The development of locality working will support the delivery of integrated front line services that reflect localised needs and priorities.

The integration of Children's Centres and Extended Provision has been successfully completed to deliver a clear focus through the clusters in the five locality areas. Rationalisation of funding arrangements and staff structures has delivered better integration and more straightforward public access to services. The Parenting and Family Strategy will provide a significant focus for the development of better integrated and coordinated support services for families in line with the Government's 'Every Parent Matters' agenda.

### What difference have we made?

Pulling together youth support services in the Barton pilot has provided a streamlined response to the needs of C&YP subject to risk taking behaviour, including offending, substance misuse and unprotected sex.

The appointment of an Integrated Disability Service co-ordinator provides a new focal point for service development and delivering the Aiming High for Disabled Children (AHDC) agenda.

Locality working groups have provided a new focus for service delivery, which are based upon locality needs assessment and involve a wide variety of stakeholders in scoping and delivering services.

## Participation and Involvement of Children and Young People

### Progress on Actions 2007/8

Children and young people have had a key role in both the first and second reviews of our CYPP. We are working towards ensuring children and young people in North Lincolnshire are able to influence all decisions and services which affect them.

*"By 2008 no policies or strategies will be agreed without the participation of children, young people*

*and their families” (North Lincolnshire Participation Plan).*

We have produced a progress report on the impact of the participation strategy, the role of the X-Press Youth Forum and the impact of the youth parliament. We have established a Children in Care Council, initially supported by NCH Action for Children, and now self-supporting under the Corporate Parenting Group.

### What difference have we made?

The principle of children and young people’s involvement in decision-making is embedded for all children and young people, However, progress to the next stage where we can identify fully the impact of involvement and participation is still work in progress.

We have also produced a detailed evaluation of the participation of children in care and these arrangements are robust and well established. Children in care/ care leavers tell us that they welcome the opportunity to have their say and feel involved and engaged.

Emerging findings from the Adolescent Lifestyle Survey (ALS) confirm our progress on the Anti-bullying agenda and results from the TellUs2 Survey confirm we are providing relevant and helpful information on alcohol, substance misuse and sexual health.

## Workforce Reform

### Progress on Actions 2007/08

We said we would set up a cross agency task group to produce a draft strategy statement for the Children’s Board. The group was established and has produced the ‘One Team’ Children’s Workforce Strategy for North Lincolnshire, which went to the Children’s Board in March 2008. There is general agreement to the 10 year vision, common induction, training and working principles. However, some the other provisions in the strategy are dependent on national agreements to align working practices, qualifications and status of staff from different disciplines and organisations. Local organisations will be working towards the commitments in the strategy while the national agreements are worked out.

The task group identified a dedicated worker in Voluntary Action North Lincolnshire to develop the relationship with the Children’s Workforce Development Council (CWDC) to make the most of the opportunities for regional developments, funding and best practice. This has been very fruitful and led to a programme of training (growing out of the Street Talk project) for the 3<sup>rd</sup> Sector about Every Child Matters. The training commenced at the end of 2007 and will continue through 2008.

The Children’s Partnership Workforce Group has led discussions with North Lindsey College about developing a foundation degree based on Every Child Matters. It is hoped that this could be in place by September 2008 and provide 10-12 places.

We have made progress locally on ‘Transformed Learning’, part of the Building Schools for the Future vision, which is about extending the skills and knowledge of support staff and others in supporting learning in schools. We are developing the roles of learning mentors and teaching assistants and looking for appropriate ways for them to gain relevant qualifications, for example, through the proposed new ECM foundation degree with North Lindsey College.

### What difference have we made?

Overall, the activities of the Workforce Reform task group have raised the awareness of workforce issues across the 3<sup>rd</sup> Sector as well as the statutory sector. It has established the idea of a ‘single workforce’ and gained agreement in principle to the 10 year strategic vision. The Children’s Partnership Board has agreed to extending the life of the task group to become a standing ‘Workforce

Group' reporting to Children's Board.

ECM training for 3<sup>rd</sup> sector workforce has already benefited 114 3<sup>rd</sup> sector workers and volunteers, starting with the 6 part time 'detached' workers who deliver Street Talk. This has begun to establish a common core of skills and knowledge across the 'single service' for children, young people and their families.

A programme of accreditation training has provided qualification training for 3<sup>rd</sup> Sector workers, who would otherwise not have had access to these qualifications. For example, 13 people have received accredited Youth Worker training to level 2; 10 have completed their portfolios and received the award; and a programme for level 3 is being developed.

## Resources

### Progress on actions

We have developed a Local Area Agreement for children and young people to support the delivery of our CYPP priorities. We have developed, re-designed and commissioned a range of services to meet identified need, in line with our commissioning framework.

We have established a Finance and Commissioning sub-group (operating to the delegations of CTEG) to maximise the benefits of alignment/pooling of funding and support commissioning processes. We have undertaken an audit of commissioned arrangements and established new monitoring and evaluating processes.

We have appointed a Head of Resources to oversee the integration of resources and identification of value for money service delivery models.

### What difference have we made?

The Finance and Commissioning sub group has identified a model for pooling funding of services for children to support the further development of our Children's Trust arrangements.

The Local Area Agreement reflects the joint ownership of targets across the Council and the PCT (e.g. targets on obesity, teenage pregnancy, breastfeeding and local targets for CAMHS).

We are developing a commissioning plan and framework to increase the capacity of the voluntary sector to deliver services and support to children and young people.

## Section 2: Progress 2007/08 on delivering Children and Young People's Plan Outcomes and Priorities

### Be Healthy

**Priority 1: To reduce obesity and promote physical activity and healthy eating**

#### Progress on actions during 2007/08

We said that we would encourage children and young people to take more exercise

- The Fit for Football and Physicality Pilot have been successful in engaging primary school children in physical exercise. Similarly the Street Sport programme provides ongoing delivery of informal sports sessions to young people in Barton, Ashby, Keadby and Winterton on the streets. We are in the process of extending the range of activities we provide for young people as we have been successful in attracting funding to deliver a Football Activators programme in Crosby and a Street Leaders project in the Brigg area. Additional activities are also provided in the school holidays.
- The Active Choices Active Futures Steering Group was established (28 February 2008) to implement the Active Choices, Active Futures Strategy.
- Schools are continuing to promote messages to reduce obesity and a LPSA Pilot healthy lifestyles for young people physical activators has successfully engaged children in 10 primary schools. We have also secured funding to establish a second 'Playing for Success' Study Support Centre. The centre will deliver health promotion messages linked to 72 schools over the next 3 years.
- Children with disabilities are able to access weekly sport, play and active recreation activities at Epworth Leisure Centre, Ancholme Leisure Centre, West Common Sports Hall and Park Community Centre and we provide an additional programme of activities in the summer holidays. A Development Coordination Disability Project is also in place and working well to achieve the best outcomes for this vulnerable group.
- Outreach family support services, the Practical Family Support Service (PFSS) & Home Start North Lincolnshire support families to raise awareness of the importance of physical activity and healthy eating. This has included issuing relevant information, signposting and referring on to specialist agencies for both parents and children. In addition, the PFSS "Parenting with You" parenting course covers physical activity and healthy eating in week four of its programme.

We said we would set a baseline for obesity amongst children and young people

- We have weighed and measured 84.4% of reception and year 6 pupils. School nurses have developed a new holistic programme, delivered in partnership with the PCT and Schools. The feedback on it has been very positive. We are continuing to identify locations suitable for measuring BMI in other age groups particularly years 9, 10 and 11. 20% of Choices clients currently have their BMI measured and we aim to increase this to 50% in 08/09.
- We said we would provide targeted early intervention and promotion of healthy lifestyles ensuring that we engaged local communities and ensure programmes are delivered within familiar environments. The Healthy Schools Programme is an important part of this and in April 2008 57 out of 83 (69%) schools had obtained Healthy School Status. This is up from 42% 2005/06; and 48% 2006/07. In conjunction with this the joint food related training implemented by the Healthy Schools Programme delivered by the Community Dietetic Service and the Local Authority School Meals Service has reached teachers, teaching assistants and some extended service providers.
- In the wider community we have provided a range of dietetically quality assured nutrition and healthier lifestyle courses for children's centre staff. Level two courses are currently being developed and will be delivered in 2008/09. A range of Cooking Clubs are already up and running and providing a range of food hygiene training to school staff, teaching assistants, parents

and support staff . We are hoping to develop these further and are supporting 10 schools plus 'Study Heslam' to deliver 'Let Get Cooking' Clubs over the next 3 years. The club aims to help children, their families and the wider community learn new cooking skills.

We said we would encourage and enable breastfeeding to give children as healthy a start in life as possible

- We undertake a monthly data collection on breastfeeding initiation rates to help monitor rates. The rate in 2007/08 was 56.4% and has remained static at around 56% for the last three years.
- We now employ a breastfeeding coordinator to ensure a consistent approach is taken across the area and to support women in the hospital and community who may be experiencing particular difficulties. Enabling Mothers to Breastfeed (EMB) peer supporters have provided volunteers to work alongside parents and professionals and a poster campaign has been aimed specifically at fathers to support mothers to breastfeed.
- We recognise that new bold initiatives are required utilising local partnerships, particularly the volunteer peer supporters, if we are to achieve a change in local attitudes towards breastfeeding. The Adult Overview and Scrutiny Committee has reviewed obesity in North Lincolnshire and will comment on breastfeeding when published.
- We have included the improvement of breastfeeding rates in our LAA agreement, underlining our determination to improve on this issue.

## What difference have we made?

We have supported more schools to gain Healthy Schools status, and all schools continue to get good OfSTED outcomes for Healthy Lifestyles, to make sure as many children and young people as possible have access to an environment that actively promotes healthy lifestyles. Some examples of those participating include

- 85% of 5-16 year olds are participating in at least two hours of high quality PE and sport at school
- 522 children have attended street sport activities (2570 throughput)
- 2,000 children took part in summer 2007 school holiday activities
- 372 children with disabilities have taken part in sport play and active recreation activities on a weekly basis
- 3,500 children have received swimming lessons through the school swimming programme and Swimlincs (106,400 throughput)
- 515 children have attended weekly sport and active recreation activities through the LPSA2 Healthy Lifestyles for Young People Project (throughput 9254)
- A Walking Your Way to Health project for schools has been set up with 13 schools and 2 out of school clubs, a further 30 schools are interested. Existing walks are being made child friendly so that children can go with parents and grandparents.

Schools say pupils are more aware of healthier eating and physical activity as part of a healthy lifestyle. Results from the TellUs2 Survey showed that 74% of young people took part in regular and organised physical activity, which is above the national average.

We have put in place a programme for gathering weight and height information on all reception and year six children. We have improved from 25% in 2005/06 to 84% of reception and year 6 children in 2007/08. This is higher than the national average. This is providing invaluable baseline data to enable us to measure the impact of our initiatives in years to come. In 2006/07 11.1% of reception children were overweight and 11.1% were obese. 14.8% of children in year 6 were overweight and 16.7% were obese in 2006/07.

## Priority 2: To reduce the use and effects of alcohol and drugs and smoking

### Progress on actions during 2007/08

We said we would ensure that children and young people are aware of the effects of alcohol, drugs and smoking and are able to make informed choices

- To support this work we are putting in place an alcohol harm reduction strategy. We have continued to develop drugs and alcohol education, expand training to support multi-agency delivery and provide support for schools in responding to drugs related incidents. The Practical Family Support Service & Home Start North Lincolnshire have further developed their work with families to raise awareness at a preventative level and support those who are substance users.

We said that we would provide smoking cessation services for children and young people

- We have supported school nurses to undertake brief intervention training and have a programme to roll this out to Health Visitors in 2008.
- We have targeted smoking cessation services at pregnant women by providing brief intervention training to Neonatal Practitioners through the Neonatal outreach NICU nurse to help parents of babies on NICU to stop smoking. Community based midwifery support workers are also trained in brief intervention on stopping smoking. To help improve services we have reviewed and enhanced the role of the dedicated smoking and pregnancy advisor who delivers stop smoking programmes to pregnant smokers. The 'Health Bites' programme is underway and a stop smoking review has been undertaken.

We said that we would support the rigorous enforcement of licensing laws and prevent selling to underage young people

- We have supported more young people to participate in alcohol and tobacco control initiatives, including 'mystery shopper' test purchasing exercises.

We said we would encourage positive parental role models for children and young people through providing better co-ordination and enhanced provision of support for parents

- This will be supported by the multi-agency Parenting and Family Support Strategy which will be launched in autumn 2008.

We said that we would realign the DELTA Service

- We have done this through the realignment of services as an Integrated Youth Service, focussing on targeted youth support. One of DELTAs priorities is that clients are assessed for their alcohol use and if necessary are offered an appropriate intervention to encourage them to reduce their intake of alcohol.
- We have re-established the Substance Use Collaborative. The first meeting was in April 2008 and it was agreed that the group will meet bi-monthly.

### What difference have we made?

Emerging findings from the Adolescent Lifestyle Survey indicate that smoking prevalence amongst secondary schools age pupils appears to have fallen since 2004. Also the numbers of children purchasing tobacco from local shops appears to have fallen since 2004.

Young People tell us that they have good access to information about the risks of alcohol, drugs and smoking. In particular the results of the TellUs2 survey revealed that 81% of young people said the information they received on alcohol was good enough or better. 74% said the same for information on sex and relationships, both of which were above the national figures. 82% of young people in the TellUs 2 survey reported that they had not taken any drugs in the previous four weeks, which was better than the national figure of 80%.

Following a consultation exercise with young people, DELTA have moved to a more central location in Scunthorpe. Consequently DELTA is more accessible to young people, families, professionals and relevant agencies.

DELTA are continuing to actively develop the evaluation of their service with young people. As an

example of good practice they ask other professionals working with young people who have used their services to complete a service evaluation form. The JAR report reinforced the services' commitment and highlighted that "the service to support those currently misuse drugs or alcohol or smoking are good, with good commitment of staff in the Drug Education Liaison and treatment Agency (DELTA), in schools and across the integrated young people's substance misuse service to educate and support those in need".

DELTA are promoting the health of young people in relation to their substance misuse by providing health checks at specific venues, including YOT and pupil referral units and the leaving care service, where vulnerable young people can be targeted. They are actively encouraging young people who engage in risky behaviours to take up the offer of hepatitis B vaccinations and beginning to develop baseline information on take up rates.

A screening tool that has been planned to be rolled out in 2008/09 will allow practitioners based in universal services to identify young people at risk of developing substance misuse problems earlier and offer appropriate interventions at an earlier stage.

We have engaged a wide range of partners in the development of our Parenting and Family Support Strategy, improving communication and co-ordination, improving access to parenting support and making sure that Parenting and Family Support is properly located in the planning and strategic development of the Children's Trust Partnership in North Lincolnshire. This will be published by autumn 2008.

We have enabled more young people to contribute to alcohol and cigarette test purchasing exercises, which has helped raise young people's awareness of the issues and helps enforce the licensing laws.

### **Priority 3: To promote emotional and mental well-being**

#### **Progress on actions during 2007/08**

We said that we would create an effective and accessible comprehensive CAMHS for North Lincolnshire

- We have now finalised the CAMHS strategy and have made sure that the CAMHS Strategy Action plan appropriately reflects the needs of vulnerable groups and supports the development of young people friendly and accessible services. A single point of entry pathway for behaviour has been developed in order to minimise duplication and ensure equity at tier 1

We said that we would support young people experiencing emotional and mental well-being problems

- We have explored additional programmes to support 'at risk' or 'vulnerable' children and young people to run alongside SEAL in schools and for those attending study support and/or PRUs. Aspects of cognitive psychology have been incorporated into the 'Playing for Success' Centres at Study United and Study Heslam to encourage the development of healthy minds by forming positive images and increasing motivation and self esteem. We have also provided awareness raising training for teachers on mental & emotional well-being in vulnerable groups e.g. impact of domestic violence and drug and alcohol abuse through the Healthy Schools Programme. We are continuing to develop the Directory of Services to Support Emotional Health & Well-being for Children & Young People in North Lincolnshire.
- We are in the process of implementing the Mental Health Promotion Strategy and have identified and adopted a Mental Well-being Impact Assessment tool to use in North Lincolnshire. We have trained a Programme Co-ordinator on Mental Health First Aid and during 2008/09 we will continue to develop and deliver an extensive multi-agency training programme. Commissioning guidance for parenting education and support programmes has also been successfully developed.
- Outreach family support services, the Practical Family Support Service & Home Start North Lincolnshire have further developed their provision of vital preventative messages and support to assist with healthy self esteem and healthy emotional wellbeing to both parents and children. Evidence shows support from these services has prevented crisis intervention in many instances. Both agencies have taken a multi-agency approach, complimenting specialist agencies involved with families.

## What difference have we made?

- Emerging findings from the ALS indicate that the vast majority of children (85%) said they were happy with life. 95% said they had at least one good friend and that almost all feel their families look out for them.
- We have hit the LAA target for 2007/08 for progress towards a comprehensive CAMHS (from 10/16 to 11/16 under the old definition).
- We have reduced the specialist CAMHS waiting list by 50% and continued work on restructuring the specialist service to further reduce and then sustain a minimum level of waiting.
- We had no admissions to Tier 4 CAMHS in 2007/08 compared to 3 admissions in 2006/07, suggesting that people are receiving more effective support at CAMHS at tiers 1, 2 and 3
- By strengthening the links between the CAMHS Strategy and the draft Parenting and Family Support Strategy we have ensured that the actions required to deliver behaviour management programmes are appropriately coordinated

## Priority 4: Teenage Pregnancy/Sexual Health

### Progress on Actions 2007/08

We have said that we would reduce the North Lincolnshire teenage pregnancy rate by 50% from 1998 to 2010

- To achieve this we have ensured coordination between the Teenage Pregnancy Strategy and North Lincolnshire Sexual Health Strategy/ Long Acting Reversible Contraceptive Implementation Plan and inclusion of targeted actions around vulnerable groups. We have also implemented the strategies for teenage pregnancy and men's health.
- To improve the emotional well-being and life chances of young people enabling the avoidance of risk taking behaviour, we have further developed Clinical' Choices through Children's Centres and Extended Services and there are now a greater number of Choices and Mini-Choices sessions offered. This has led to the increased uptake of Long Acting Reversible Contraception (LARC).
- Young people continue to be provided with SRE packages in schools and we continue to support schools in implementing these and we have now developed an updated package for KS 3 & 4.
- We said that we would support young people's sexual health
- The PCT has established the new Chlamydia Outreach and Sexual Health Team (COAST) to support the Choices Clinics and we have introduced Level 1 sexual health screening appointments for young people.
- We have now established a baseline for sexual health from the last three full years worth of data from the Centre for Sexual Health (CSH) on U25's STI rate by infection, age and gender.

## What difference have we made?

- We have increased the uptake of LARC by 91% for implants and 15% for IUD/IUS in women of childbearing age 15-49. The largest growth area was in the fitting of implants in women aged 15-25. The rate has increased from 24.9 per 1000 in 06/07 to 37.8 per 1000.
- The COAST programme for the reduction of sexually transmitted infections has made good progress although the PCT did not fully fund COAST to be able to achieve the national target set for year 1. Full funding has been identified for year 2 and the expectation is that we will hit the national target of 17%.
- Children and young people report to obtaining most of their sex and relationship education at

school with sexually transmitted infections being the most popular element. Awareness of STIs appears to have doubled since 2004, knowledge and use of local Choices clinics has also grown.

- Despite the teenage pregnancy rates slightly increasing this year there has been a 10% drop in number of teenage pregnancies from 1998 to 2006 and there is generally a downward trend
- We have initiated a pilot STI Screening and Treatment service through Choices in two clinics each week
- We have seen a growth in the number of young people using Choices in 07/08 compared to 06/07. The figures are currently being collated but preliminary data shows a potential increase in use of 20% of which 5% are first time users of the service. Provisional data suggests that usage by males has risen by as much as 20% from 2006/07 to 2007/08. .

## CYPP Priority Group – Children in care and care leavers

### Progress on Actions 2007/08

We said that we would ensure our staff are appropriately skilled and trained

- We have delivered training to carers and staff on attachment, emotional development and mental well-being for children in care and care leavers in line with knowledge and skills guidance and assessed needs of children and young people.

We said that we would support children and young people in care and care leavers to reach their full potential;

- We continue to ensure their health needs are assessed and addressed by ensuring that all children and young people in care have a health plan which is developed in conjunction with the specialist nurse for children in care and is based on their health assessments. We have ensured that children in care and care leavers have access to universal services in relation to health promotion and prevention of risk taking behaviours.
- To continue to improve the stability of placements for children and young people with complex need we have evaluated the effectiveness of the pilot therapeutic support project for those with complex emotional and behavioural difficulties and considered options for expansion or the project.
- We have reviewed the current model of provision for specialist CAMHS primarily for foster care and put plans are in place to develop services to residential care and care leavers.

### What difference have we made?

We have delivered CAMHS Training to 20 staff and foster carers. This has improved access to CAMHS for children in care and improved integrated working between staff, foster carers and the CAMHS team.

We have ensured that at least 94% of CIC have a health plan (Sept 2007) and intend to maintain this top range performance.

Children in care have better access to universal services around health and health promotion and prevention of risk taking behaviours. A report analysing this improvement is available. We have helped 10 young people in care/care leavers to give up smoking.

We piloted a therapeutic support project for children and young people with complex emotional and behavioural difficulties involving a CAMHS screening assessment. It was offered to all children in care 6 years old and over and 70% took up the offer. Health colleagues are currently evaluating the pilot.

## CYPP Priority Group: Disabled children and those with learning difficulties

## Progress on Actions 2007/08

We have made good progress in increasing nursing support for the two special schools, have conducted the Adolescent Lifestyle Survey (ALS) for the second time and are amalgamating the findings in relation to disabled children and young people. We have set up a programme, led by a dedicated co-ordinator, to secure Aiming High for Disabled Children funding and take forward the Aiming High agenda.

However, we are carrying forward to the current year the priority actions for developing and publishing an Autism Strategy and specific LDD position statement for specialist CAMHs.

## What difference have we made?

We have increased the nursing support to the two special schools to ensure that the children with complex health needs continue to receive education in the locality thus reducing the need for expensive out of area placements. Integrated health support also reduced admissions to A&E.

Emerging findings from the Adolescent Lifestyle Survey show 9% of young people consider themselves to have a disability and of these pupils 66% said this did not stop them from doing things the things they liked to do.

## Stay Safe

### Priority 1: Reduce the incidence and fear of bullying

#### Progress on actions during 2007/08

We launched the Anti-bullying Strategy on 25<sup>th</sup> March 2008. The strategy provides the blue print to deliver our promises to

- Further develop monitoring in schools and youth settings
- Develop the role of the Anti-bullying Coordinator and implement the Anti-bullying Action
- Implement the routine collection of homophobic bullying in schools and group it with the collection of racist bullying data
- Develop an integrated programme of awareness raising events, and develop a full partnership commitment to the use of restorative justice approaches to bullying in relevant settings.
- Establish a network of Anti-bullying coordinators in all children's settings, working minimum standards.

The Adolescent Lifestyle Survey in 2007/8 to measured the local incidence and perception of bullying. We have continued to roll-out buddies and mentor schemes in schools. We have implemented the anti-bullying text-line for children in care ("bully phone").

Disabled children are particularly at risk of bullying. To counter this we have provided more inclusive play, sport and active recreation opportunities for disabled children and developed the Street Sport programme to further focus on the most disadvantaged groups, particularly those most at risk of offending and anti-social behaviour.

We are actively involving parents and carers in reducing the fear of bullying and the leaflet "Pathways to Positive Relationships" has been widely distributed. It offers advice to parents on steps to take if a child is being bullied. The Parents Anti-bullying Group also supports and advises parents and carers via mobile phone, email and meetings. They give talks to any interested groups and have recently been invited to attend a national event, organised by the National Children's Bureau, on recommendation of the Anti-bullying Alliance.

The North Lincolnshire Youth Anti-bullying Council (YABC) is run by young people for young people. The Chair influences national policies and guidance and is in regular contact with Secretary of State for Education. The group meets monthly but also gives advice/support via website and mobile.

#### What difference have we made?

A Bullying Forum day, which included the launch of the strategy, included partners as a way of creating a shared awareness of the issues and a shared commitment to working collectively to address them.

We have improved the monitoring of bullying by developing systemised monitoring arrangements in target schools, with a view to determining the impact of bullying, with the plan to roll out to all schools by 2008/9. Emerging finding from the 2007 ALS Survey suggest that 44% of respondents were bullied in school, compared with 69% nationally (Bullying UK survey 2006). Emerging findings also suggest that the proportion of pupils who said they were worried about bullying fell between 2004 and 2007.

We now have a network of anti-bullying co-ordinators in all childcare settings and they are making a significant contribution to awareness of the issues and better coordinated and consistent action to manage any incidents.

The Anti-Bullying Policy is well embedded in schools, strengthened by the safeguarding policy, under the auspices of the LSCB, which incorporates references to anti bullying, safer recruitment etc. This raises the profile and importance of managing bullying within the school environment.

54% of primary schools have buddies and we are on target to achieve 75% by the end of 2008/09.

85% of secondary schools have peer mentors and we are on course to achieve the 100% target by the end of 2008 in relation to peer mentors in secondary schools.

We have refined the monthly reporting of bullying involving children in care.

The JAR found that “effective work has been undertaken to develop and implement an overarching anti-bullying strategy. All schools have an anti-bullying policy. Peer mentors, buddies, positive parenting programmes and a pilot project for children in transition from primary to secondary school have all yielded positive responses from the children and young people involved. All children interviewed during the inspection affirmed that schools deal with bullying well. Good anti-bullying work is also being undertaken as part of a broader programme of behaviour support.”

## Reduce the harm caused by domestic violence

### Progress on actions during 2007/08

We said we would improve our monitoring of data relating to children and domestic violence. We have

- Established a reporting structure regarding children via C&F Duty/Intake.
- Included the routine monitoring of performance and activity on domestic violence within the Children’s Trust Partnership performance framework.

We said we would continue to raise the awareness of domestic violence and its impact on children and young people. We have

- Commenced a review of the DV pathway to make sure it is effective and well-understood.
- We have held several high profile conferences and events about DV and Forced Marriage and produced and distributed publicity materials.
- The Council has implemented a Domestic Violence Policy specifically for employees.
- Piloted the ‘Miss Dorothy.com’ in five schools, included Domestic Violence awareness in the peer-mentoring programme, included Domestic Violence in the development of SEAL and delivered awareness training to teaching education support staff
- We have secured funding for an Independent Domestic Violence Advocate who is working as part of Children and Family Services Duty to ensure early identification to link victims and to work with high risk victims of domestic violence identified through the MARAC.

We have also identified funding to continue the IDVA (Independent Domestic Violence Advocate) to work with high-risk victims identified through the MARAC.

We said we would develop and launch a web based Domestic Violence Directory to provide access to national and local information and support. This was publicly launched on 27 March 2008.

### What difference have we made?

The JAR inspectors found that “the domestic abuse strategy is well integrated with other initiatives, such as Safer Communities and the LSCB. This has contributed to the good reduction in the number of child protection case conferences featuring domestic abuse as the primary concern by 20% since 2005.” They also said that “The Social and Emotional Aspects of Learning (SEAL) programme has been effective in primary schools and is now being rolled out to all secondary schools”. (JAR Report). This includes DV as an issue.

We have developed the MARAC process and activity levels have improved from 2 MARAC cases being referred in 2006/07 to 31 cases being referred in 2007/08.

86 properties have been target hardened where domestic violence is a factor and two properties have had a complete sanctuary scheme fitted.

Repeat victimisation has fallen from 51.47% on 2006/07 to 14.8% in 2007/08.

We have improved our data collection for referrals relating to domestic violence. This is allowing us to analyse the impact of domestic violence interventions, training and awareness raising initiatives. Initial conclusions suggest that improved work with tenancy support has increased the capacity to support victims of domestic violence and that while the trend in reporting is rising, repeat victimisation is decreasing.

## Keep Children and Young People safe from accidents in the home and on the road

### Progress on actions during 2007/08

We said we would provide better information and advice on the prevention of accidents in the home. We have

- Published and distributed the LSCB Keeping Children Safe handbook
- Made sure that prevention of accidents features in the Parenting and Family Support Strategy
- Continued to provide a wide range of advice and equipment to children and their parents to improve safety in the home and on the roads
- The Fire and Rescue Service have provided fire safety awareness sessions to 1977 children and young people. 10 children have successfully completed the 'fire friends' programme.
- The Practical Family Support Service (PFSS) Parenting with You Course has delivered Home Accident Prevention information to all attendees. This has included issuing relevant agency numbers and issuing accident prevention literature.

We have implemented a Child Death Overview Panel and improved our recording and management of the aftermath of child deaths in the light of current legislation.

We said we would address the problems of young drivers

- Fire & Rescue Service and Police have delivered young driver and passenger presentations to students at North Lincolnshire colleges.
- We have provided "First Car" magazine to all sixth form and college students in North Lincolnshire. First Car magazine will be published twice a year from March 2008 (March and September.).

We said we would provide in-car safety information to all prospective parents booking in at the ante-natal unit at Scunthorpe Hospital. We have distributed around 200 packs per month. We have delivered in-car safety training to children, young people and parents.

We have provided safe use of the road information and training appropriate for KS1 through the Partnership with Parents scheme, and continued to deliver cycling training and other road safety programmes to all ages through primary and secondary schools.

### What difference have we made?

The JAR inspectors found that "a range of good work is undertaken on a multi-agency basis to inform children, young people and their carers about their safety, and there is helpful public information available to them. The Fire and Rescue Service, the Police, and the Highways and Planning Department are very involved in safeguarding initiatives through membership of the LSCB and effective work in schools and communities. Good partnership work has contributed to a significant reduction in the numbers of children and young people killed, or seriously injured, on the roads, from 16 in 2005 to seven in 2006. In the 2007 Audit Commission School Survey, schools judged the support from local services for road safety highly and the local authority is in the top quartile of all

councils nationally. The number of children hurt in fires has also reduced significantly, from 14 in 2005 to two in 2007.”

Emerging findings from the Adolescent Lifestyle Survey 2007 suggest that the majority of children feel safe moving about their local community and travelling to and from places like school, the local park and the town centre.

During January and February 2008 a Home Safety evaluation questionnaire was completed by service users. Parents commented that ‘it’s an excellent service and benefits many families and young children.’ and suggested that the service provide fire blankets and fire extinguishers and that information on safety and access to equipment be provided on the maternity ward.

An evaluation of the PFSS Parenting With You Course has indicated the support and information given to address Home Accident prevention has made a positive difference in their homes. Evaluation records families feel much safer through the actions of this service. Families stated they felt the intervention has prevented escalation to crisis.

## CYPP Priority Group – CIC/Care Leavers

### Progress on Actions 2007/08

We said we would continue to maintain the standards in the Adoption and Fostering Service/Children’s Homes. We have

- Achieved a “good” rating overall in the inspection for the Adoption and Fostering Service. One of the four Children’s Homes one achieved “good” overall and three “outstanding” in the September-March 2008 inspections.

We said we would improve stability for Children in Care by ensuring children and young people are better matched to their placement. We have:

- Launched a cross-council Recruitment Strategy – and increased resources and activity to recruit more carers.
- Increased the number of children with CAMHS therapeutic team involvement.
- Strengthened our work with partners to support young people in their homes and community to prevent entry into care.

We said we would evaluate our performance data on CIC age focus groups to establish improvements that need to be made in decision-making. We have

- Reviewed the focus groups, leading to establishing a new “Stability/Matching” process as part of the referral management process.

We said we would develop a QA system to identify areas for development in improving quality assessment and more effective decision making.

- The system was developed by the end of January 2008 and the first report produced by February 2008.

We said we would maintain the high standard of inspection already achieved within the Adoption and Fostering Service/Children’s Homes.

We have improved stability for Children in Care by ensuring children and young people are better matched to their placement.

We have launched a cross Council Foster Carer Recruitment Strategy and looked to increase resources and activity to recruit more carers.

### What difference have we made?

We have increased the number of children diverted from care by 10% 2008-9 from the 2007/8

baseline.

In 2006/7 we had 5 children in care receiving support through a specific CAHMS therapeutic group work programme. This increased to 14 young people engaging with the programme in 2007/08 and ten young people completing the course by the end of March 2008.

## CYPP Priority Group: Disabled children and those with learning difficulties

### Progress on Actions 2007/08

We are continuing to extend best practice within dual or multi agency placements to all external provision where children and young people with learning difficulties and/ or disabilities are placed away from home.

We have established a task group, under the Anti-bullying group who are currently developing a specific anti-bullying strategy for disabled children.

We are carrying forward to 2008/09 on the development of baseline and service specific information for disabled children and those with learning difficulties on

- Accidents in the home
- Accidents on the roads
- Bullying

### What difference have we made?

“Strong commitment and action to meet the needs and improve outcomes for children and young people with learning difficulties and/or disabilities” (JAR)

Emerging finding from the Adolescent Lifestyle Survey (ALS) suggest that of the 9% of young people who consider themselves to have a disability or long term health problem 66% this did not stop them from doing the things they like to do. Whilst young people with disabilities were no more likely than others to say that they had been bullied, they were more likely to say they had been bullied a lot. We are responding to this through the specific anti-bullying strategy for disabled children and through additional input to schools and other settings to raise awareness of this issue.

# Enjoy and Achieve

## Priority 1: To help children and young people improve their attainment through education

### Progress on actions during 2007/08?

#### Early Years

We said that we would improve data collection

- We have developed methods of tracking impact for each cohort of children in childcare settings and children's centres
- We established an inter-agency data group to collate information and individual cohort data to support the Early Years Outcome Duty.

We said that we would invest in training to support the implementation of the Early Year Foundation Stage (EYFS) framework. We have rolled out the extensive training plan, with focus groups around action research, children's centres and EYFS pedagogy. We have reviewed the support programme to meet the professional needs of practitioners in the delivery and development of EYFS principles and commitments.

We said that we would implement the Children and Young People's Workforce Strategy in relation to early years. We have ensured that plans and service provision reflect the needs of each locality, including children with disabilities and those from black and ethnic minority communities.

#### Primary Strategy

We said that we would analyse results to assess the effectiveness of the Primary strategies

- The analysis of school data based on keystage results and Foundation Stage Profile (FSP) has identified those schools in need of support.
- Raising Attainment Plans (RAPs) outlining support and monitoring arrangements have been identified for all priority schools.

We said that we would continue to roll out the Primary Strategy Continuing Professional Development (PS CPD) programme for Literacy and Maths and Communication. Language and Literacy Development (CLLD) including letters and sounds. Phase 2 of the PNS support programme for the renewed frameworks for literacy and numeracy are now ongoing. Training for letters and sounds is being delivered jointly by advisory officers for English and the Early Years Team.

We said that we would deliver Phase 3 of the SEAL programme. Cross phase working has begun and phase 3 is beginning to be implemented and 73% of schools are now on board.

#### Secondary Strategy

We said that we would analyse results to assess the effectiveness of the strategies and actions revised accordingly. Data analysis has determined the priorities of advisory officers allocations of support to schools/departments in most need. The AO's plans were reviewed in January 2008 and revised accordingly to meet the new priorities.

We said that we would implement the 14-19 strategy

- A detailed analysis was completed for 7 diplomas and employer engagement opportunities identified in all 7 diplomas
- A new work-based learning (WBL) scheme is running as part of a national roll out. Funding is secured for 2 years
- A peer mentoring project has been rolled out to secondary schools. The programme has been

successful in improving persistent absence rates.

- NEET figures reduced to 7%
- We have secured funding for an additional 3 years to continue the development of North Lincolnshire's two 'Playing for Success' centres, to create innovative learning opportunities aimed at raising the educational attainment of underachieving children and young people

## What difference have we made?

'Very good challenge and support is provided by the school improvement service' (JAR)

'The school improvement service and school improvement partners provide robust challenge and effective support to secondary schools. The school improvement service is very well led and managed; comprehensive and accessible data are used effectively to drive up achievement. An appropriate emphasis has been given to improving the quality of teaching and learning. Consequently, over the last two years there has been good improvement in the percentage of 16 year old pupils achieving five or more A\*-C grades in GCSE examinations. This has been over and above the national rate of improvement, and provisional 2007 data show a 6% increase, indicating North Lincolnshire's results are now line with the national average. (JAR)

Key Stage 2 pass rates have increased by 2% in English, mathematics and science, demonstrating the impact of strategies upon pupil achievement. Key Stage 1 pass rates have also increased in all areas, with the most notable being the increase in writing by 2.4%.

The percentage of pupils gaining 5 A\*-C passes increased significantly from 54% in 2006 to 60.4% in 2007. The percentage of young people gaining 5 or more GCSE passes at any grade rose to 92% and continues to be above national average, reflecting North Lincolnshire's commitment to inclusion.

North Lincolnshire Council currently has 70% of its schools offering the core offer of provision for extended services. This compares to 54% nationally. We consistently achieve a "green" RAG rating from the Training and Development Agency (TDA) for our work on extended schools.

The Childcare Development Service continue to support childcare settings and the judgments for inspections in North Lincolnshire 2007-2008 show a significant improvement on previous years. 52.5% of childcare settings were graded as good or outstanding and 53.6% of the education settings were graded good or outstanding. The improvement has been made possible by increasing the infrastructure through the Childcare Development Service both in number of staff and skill base. Steps to Quality (STQ) has had a very positive impact on inspection judgements: settings with Outstanding are undertaking STQ.

Emerging findings from the Adolescent Lifestyle Survey (ALS) suggest that most pupils are relatively happy and say that they feel supported by both adult staff and by their peers. Almost all (98%) recognised the importance of getting good exam results and almost two thirds said that it was very important to them personally.

School inspection outcomes : all schools have been inspected under the new framework. The number of North Lincolnshire schools with good Ofsted outcomes are above the national and regional average, North Lincolnshire continues to have no failing schools and the very small number of schools causing a concern continue to make good progress.

## Priority 2: To raise aspirations and celebrate achievements

### Progress on actions during 2007/08?

We said that we would continue the Aim Higher programme. The Aim Higher funding has been allocated by the agreed formula to all secondary schools, North Lindsey College and John Leggott College. We have improved the cohort identification mechanism resulting in better targeting of disadvantaged learners.

We have supported and encouraged the Youth Opportunity Funding to groups of young people. The Great Youth debate was very well attended by children, young people and their families. We have established a Children in Care Council (see children in care).

We said that we would;

- Further develop links to China and increase numbers of schools involved – 4 new schools have established links with China through the programme
- Develop links with other countries e.g. Sweden, Italy
- Develop a music and arts service.
  - The Music Support Service delivers peripatetic instrumental lessons to over 1300 pupils in North Lincolnshire. In addition we have 28 whole class 'Wider Opportunities' projects running, with a further 28 being planned for September 2008.
  - We hold an annual North Lincolnshire Primary Music Celebration which involved 25 primary schools.

### What difference have we made?

The JAR report confirmed that we have effective work targeting the needs of vulnerable groups, re-engaging young people disaffected with learning and providing good support to students at risk of exclusion. A broad range of provision is available for young people aged over 16 enabling more young people to continue with their learning.

'A number of Aim Higher projects have been effective in raising students' aspirations and attainment' (JAR)

'Attainment of upper ability students in very good, particularly for girls, and progression into university is good and is increasing every year. Progression from the newly established pre-E2E programme is also good. Progressions rates for E2E programmes are satisfactory and improving steadily. Good improvements have been made to overall and timely apprenticeship success rates, which are well above national averages. (JAR)

Teachers Initial Professional Development (TIPD) study visit 2008 focused on Extended Services within schools. A Learning Network has been established to develop ideas. This will form an action research group exploring ideas within their own schools. Local inset sessions will be developed as part of this research process.

Two successful Early Years' visits have been carried out and used to inform future developments within the LA. Children's Centres in each LA locality will form a hub to inform develop and evaluate practice. Research will inter-link with other LA initiatives to support the LAs support and delivery of EYFS across the next eighteen months. Pedagogical practice and thinking will link with the development of the primary curriculum around learning, teaching and the concept of a learning community and enabling environments. The international visits will continue to inform active research and future pedagogical links with the LA lead for Primary National Strategy (PNS) and pedagogy across North Lincolnshire.

### Priority 3: To make sure all young people have an equal chance to enjoy and achieve

#### Progress on actions during 2007/08?

We said that we would improve data collection for Early Years to show how we address inequalities. The interagency data group has identified ways in which we can have an informed view of the challenges and qualities of each cohort of children to support closing the gap between the most disadvantaged and their peers.

In our implementation of the Children and Young People's Workforce Strategy we have ensured that plans and service provision reflect the needs of the locality, including children with disabilities and

those from black and ethnic minority communities.

We said we would work together with partners to deliver the Active Choices, Active Futures Strategy which seeks to ensure that all children and young people have access to healthy and active lifestyles and sports and leisure opportunities. The Strategy was launched in March 2008, with a multi-agency steering group to coordinate implementation.

### What difference have we made?

“Educational provision for children and young people with learning difficulties and/or disabilities is good for 11 to 16 year olds and for those post-16. Good specialist resources are available at the special school, and provision is inclusive in both schools and colleges. As a result, few young people are placed out of the council area; and only those with very specific and complex needs.” (JAR)

“Whilst there is evidence of some underperformance for a small proportion of Black and Minority Ethnic pupils at Key Stage 3, by Key Stage 4 their performance is better than the national average, particularly in terms of the percentage achieving five or more A\*-C grade GCSEs”. (JAR)

### CYPP Priority Group – Children in care and care leavers

#### Enjoy and Achieve (Also 2005/6 APA Priority)

### Progress on Actions 2007/08

We said that we would improve the transition into school for children in care. We have rolled out the pre-school PEP programme and this year 109 early years staff were trained.

We said that we would raise the attainment of children in care

- 100% of children in care have an individual education plan in place
- 100% of schools have a children in care coordinator in place

We said that we would ensure staff are suitably trained to support the needs of children in care. In 2007/08 350 staff were trained.

We said that we would target NEET care leavers in partnership with Connexions

- The percentage of young people in care who were engaged in education, training or employment (ETE) was 0.96 in 2007/08 which is significantly higher than statistical neighbours and plans are in place to target those not in ETE.

We said that we would engage children in care in leisure and recreational activities

- We have increased 67% in the use of children in care leisure passes and are developing baseline information on young people's access to leisure facilities
- The leisure chequebook pilot is currently being evaluated
- There has been an increase of 75% of children in care and care leavers participating in the Duke of Edinburgh Award this year

We said that we would increase the take up of supported learning and alternative qualifications. Plans are in place to develop internet access at the Support Centre and there has been a 20% increase on Study United placements.

We have worked in partnership with 'Study United' and Scunthorpe United 'Football in the Community' scheme' to secure external funding which supports targeted support, work placements, alternative provision, physical activity and study support opportunities for children in care.

### What difference have we made?

“The support service for the education of looked after children is good, and every school has a designated teacher. Personal Education Plans are now rigorously reviewed on a termly basis, and

actions are taken quickly when additional support for children is needed.

The number of long-term absences from school by looked after children has reduced well, and at 10.6% in 2006/07 is better than that found in similar councils'. (JAR)

In 2007, the percentage of care leavers with at least one GCSE/GNVQ, at 58.8%, was higher than that found in comparable councils. The percentage achieving five good GCSEs, although low, is improving and is similar to the national average. In 2007/08 70.6% of young people leaving care aged 16 or over had 5 or more GCSE's at grade A\*-G. This is a good improvement on the rate in 2006/07 and the national rate.

The proportion of looked after children achieving expected levels at the ages of 7, 11 and 14 remains low, as is the case nationally. The trend is one of improvement.

For the last three years, no looked after children have been permanently excluded from school, and fixed-term exclusions are falling due to the good individual support provided.

Extensive efforts are made to enable looked after children to engage in and enjoy a good and increasing range of sports, leisure and cultural activities. The youth service provides a good contribution to the opportunities available" (JAR).

### CYPP Priority Group: Disabled children and those with learning difficulties

#### Progress on Actions 2007/08

We said that we would use data to inform future support staff training needs. Previous training programmes have met some of the needs of support staff but a more comprehensive programme is in place for April 2008 to meet identified training needs across phases.

We said that we would provide a wider curriculum for KS4 Pupil Referral Unit (PRU) through links to local secondary schools. Discussions are ongoing with Partnership Coordinators to ensure future provision maximise opportunities.

We said that we would complete a full review of the success of the Independent Travel Scheme. This has been completed and presented to the parents group.

#### What difference have we made?

JAR confirms the progress we have made:

"Children and young people with learning difficulties and/or disabilities make educational progress that is broadly comparable to those in similar councils as a result of the effective support and positive opportunities provided for them. The trend is generally one of annual improvement.

Ofsted school inspections report positively on how pupils with learning difficulties and/or disabilities make progress. However, the council has rightly identified variable rates of progress of some young people across the range of identified difficulties and/or disabilities, and the need to improve the progress they make in their learning.

(North Lincolnshire Council) has set appropriate milestones, including closer monitoring of learning and disability issues in schools, a sharper focus by School Improvement Partners (SIPs), and a better sharing of information about achievement across services. SIPs are increasingly using data at individual pupil level to challenge schools to ensure that appropriate targets for improvement are set and monitored.

Good links across a variety of providers, including special schools and pupil referral units, facilitate a satisfactory and increasing range of out-of-hours and summer school provision for those with learning difficulties and/or disabilities" (JAR).

# Make a Positive Contribution

## Priority 1 Raise self-esteem and build confidence so that young people respect themselves and others

### Progress on actions during 2007/08

We said that we would use publicity, including the Council magazine to portray young people in a positive way and since October 2007 youth pages have been a regular feature in Direct. A group of young people now work with publications to design and produce these pages which are called HiJackd.

We said that we would engage young people in a range of positive activities within the community

- The Fire and Rescue Project supported 100 children and young people in 2007/08
- We have extended the Positive Activities for Young People (YOT) activity to include 50 sessions per week throughout the school holidays
- We have continued our diversity training programme to schools and arranged the annual arts event
- We have targeted the development of self-esteem, confidence and attitudes to learning of underachieving and vulnerable children and young people via personalised support at the 'Playing for Success' Study Support Centres.

We said that we would provide young people with a range of accessible volunteering activities within the community. We have secured Vfunding to set up a volunteering project in North Lincolnshire.

All young people have access to high quality SRE. There is now a system in place to identify and target young people missing SRE classes in schools and the Youth Service have improved materials for use in schools through consultation with young people.

We said that we would define hot spots of urban and rural risk and refine interventions along with the development of locality provision

- The Acorns area has been identified as an area of risk for offending. The YIP project set up this year has been successful in addressing these issues
- Partnership arrangements are working to identify and target those at risk of offending. Young people who have been excluded from schools are identified through school strategy meetings and services are deployed in a timely manner to meet the needs of those young people.

We said that we would carry out a formal review and service analysis to strengthen our support for young carers and in 2007/08 young carers continued to be supported through a Local Authority commissioned services from NCH Action for Children.

### What difference have we made?

We have implemented the next phases of SEAL and the number of primary schools which have SEAL provision increased from 55% in 2006/07 to 72% in 2007/08

Vfunding has been secured, enabling a volunteering project to be established in North Lincolnshire. The project, which will consist of 2 workers, will start in April 2008. The remit is to build sustainable volunteering opportunities for young people.

Initial finding from the Adolescent Lifestyle Survey (ALS) 2007 suggests that just under half of all pupils were involved in some sort of voluntary work in their spare time – either as a peer mentor or by doing charitable work outside school hours. One in ten said they helped coach others in sports outside school.

A system to identify and target young people missing SRE classes in schools enabled an impressive 99% of eligible young people to be reached in 2007/08.

69% of the young offenders who attended the Fire and Rescue Project have not offended.

## **Priority 2 To ensure children and young people are involved in decisions that affect them**

### **Progress on actions during 2007/08?**

We said that we would ensure that no policies or strategies would be agreed without the participation of children and young people and their families and in 2007 we developed the Young People's Housing Strategy and Young People's Charter in conjunction with young people.

We said that we would encourage the dissemination of X-Press Youth Forum information to schools and this has been successfully completed on a regular basis. X-Press have also worked with North Lincs Net (now the Digital Inclusion Unit, DIU) to develop a website for young people to express their opinions.

We have developed school councils in all secondary schools

We said that we would develop the Youth Parliament for North Lincolnshire. The Youth Parliament is being built on the foundations of the X-Press Youth Forum and bringing in the Children in Care Council, Connexions Panel, Anti-Bullying Council and school councils.

We said that we would ensure children and young people's views have a strong presence in strategic planning for services in North Lincolnshire and the Great Youth Debate was a successful way of gaining young people views on services in North Lincolnshire.

We said that we would consult children, young people and parents/carers on the priorities in the Children and Young People's Plan. We have done this through a variety of mediums including X-Press, consultation with parents, Children's Centres and the Great Youth Debate.

### **What difference have we made?**

The implementation of the Participation Strategy in North Lincolnshire has led to us moving from a culture of ad hoc consultation to true participation. We are developing our thinking towards participation being part of our every day work.

We used a variety of methods to gauge the perception of children, young people and parent/carers on the Children and Young People's Plan. Consultation through Children's Centres, The Great Youth Debate, Young Parents' Consultation and the X-Press Forum have reached in excess of 5000 people across the five localities in North Lincolnshire.

All secondary schools now have school councils and only one school does not use democratic processes to elect their school council. The number of primary schools with a school council increased from 57/64 schools in 2006/07 to 58 in 2007/08. In 2006/07 93% of young people in secondary schools participated in a school election and this increased to 98% in 2007/08.

The Great Youth Debate, 07/10/07, was attended by 2500 young people and their families

- 54 young people took part in the public debate in the council chambers
- Approximately 20 elected members attended the day

The X-Press forum have established links to the UK Youth Parliament and attended a Youth Parliament meeting in Rotherham. A residential trip, for members of the X-Press forum, allowed the group to plan new ways to take the group forward, including how to recruit new members and the issue of transporting young people to meetings.

## Priority 3 Reduce incidents of children and young people offending and acts of anti-social behaviour

### Progress on actions during 2007/08?

We said that we would refine ASBO protocols in particular to control community initiatives on publicity for young people causing trouble and annoyance. These protocols have been successfully refined and the YOT are now working hard to ensure issues are reported consistently.

We said that we would continue to develop community sentences to reduce custodial sentences and in particular, expand Intensive Supervision and Surveillance Programme (ISSP) activity to keep repeat offenders out of custody. The effective use of ISSP combined with the support of the Resettlement and Aftercare programme has been successful in maintaining custodial sentences at a reducing level.

We said that we would support diversionary and preventative projects to help keep young people out of trouble. We have

- The Fire and Rescue Service currently offers a pilot Fire Cadet Scheme leading to a B-TEC award over 2 years. It has places for 12 young people, 2 hours a week and is equivalent to 3 GCSE's. The course is being evaluated.
- Reinforced information flow and intelligence through wider involvement in relevant ASBO task groups including between development of diversionary options
- Developed a Targeted Youth Offer in 2007/08 to provide more focus on vulnerable populations and provision of positive activities
- Enhanced the support of Acceptable Behaviour Contracts (ABCs) as an alternative to ASBOs (Anti-Social Behaviour Orders)
- Supported new targeted activities in hot-spots and supported the Criminal Damage Task Group
- Linked Positive Activities for Young People (PAYP) and Youth Inclusion Programme (YIP) to develop further diversionary preventative capacity in the Youth Offending Team (YOT).
- School strategy meetings are enabling young people to be identified and targeted early
- Intelligence information is being used to develop the Targeted Youth Services (TYS) and information sharing has been addressed

### What difference have we made?

The effective use of ISSP combined with the support of the Resettlement and Aftercare programme has maintained custodial sentences at a low level, an average of just over 10% for the last 4 quarters.

The proportion of young people subject to YISPs who do not offend improved to 100% in 2006/07. The number of first time entrants into the YOT fell from 421 in 2006/7 to 306 in 2007/8.. The number of ABC's issued fell from 27 in 06/07 to 11 in 08/09, similarly the number of ASBO's issued to young people reduced from 10 in 06/07 to 4 (2 civil and 2 criminal) in 07/08.

## CYPP Priority Group – Children in care and care leavers

### Progress on Actions 2007/08

We said that we would make sure that children in care receive all the support they need. We have relaunched a revised Corporate Parenting Strategy and pledges with a revised membership of the Children in Care Strategy Group.

We said that we would ensure that children in care are involved in decisions that affect them. We have established a Children in Care Council and we have plans in place to develop this further

We said that we would engage children in care in a wider range of activities in the community

- A participation annual report is currently being compiled
- Plans are in places to develop performance frameworks and definitions
- The Children in Care Council has been established and a peer mentoring scheme is being developed.
- 20 Young people are involved in the implementation of the e-mentoring project
- North Lincolnshire young people are members of key strategic groups and programmes that are operating on a regional basis

### What difference have we made?

Children and Young People's Services have employed two care leavers as Young People's Participations Officers to work in partnership with us to develop services. We continue to support young people in the workplace.

We have successfully ensured that all children in care participate in their reviews since 2005/06. This is above the national rate of 87% (in 2006/07).

The ratio of children in care receiving a final warning, conviction or reprimand compared with the general population has reduced from 3.6 at 30 September 2006 to 1.6 by the end of March 2008.

We said that we would consult children in care and care leavers on the priorities in the Children and Young People's Plan. This was done via the Garage Patch Kidz, Children in Care Council Editorial Group and children's homes residents. Younger children considered reducing bullying to be one of the most important priorities. Older children and young people considered the most important priorities to be ensuring all children and young people have an equal chance to enjoy and achieve.

### CYPP Priority Group: Disabled children and those with learning difficulties

#### Progress on Actions 2007/08

We said that we would conclude consultation and produce a detailed action plan in line with the Disability Equity Duty for disabled children, During the development of the Disability Equality Scheme 81 disabled children/ children with SEN were consulted. The document was taken and a presentation given to Leisure Services QPR.

We said that we would increase access to play and leisure for Disabled children and establish a dedicated person to increase the take up to this vulnerable group. Leisure service have agreed to identify champions in each setting and also audit their specific services to draw up individual action plans.

### What difference have we made?

'The commitment to involving young people with learning difficulties and/or disabilities in influencing policy and practice as well as their own individual provision, is strong. School inspections show listening to young people, and acting on their views, as excellent or good in secondary schools, pupil referral units and special schools, although satisfactory in primary schools' the X-Press Forum included their voice, and individual provision has been altered in response to feedback, for example at the Cygnet Centre through use of a Grumbles Book'. (JAR)

# Achieve Economic Well-Being

## Priority 1 Enable young people to continue their education, training and get jobs in North Lincolnshire

### Progress on actions during 2007/08

We said that we would provide support for young people to enter education, employment or training

- A Connexions PAs is now based ½ a day per week at the Children in Care Support Centre and two PA's are now promoting the Care to Learn programme; encouraging young parents to re-engage in education.

We said that we would improve the access to work based learning (WBL)

- A new work based learning centre in Barton offers both apprenticeship and E2E opportunities and a centre in Scunthorpe now offers a programme for apprenticeships in construction. To raise the awareness among PAs and other professionals of work based learning opportunities and the financial and transport support available a successful showcase event was held.
- The 14-19 Post Inspection Action Plan (PIAP) funds supported a variety of post 16 learning providers and partners to enhance the quality of provision and increased the number of learners achieving Level 2 and 3 qualifications

Ensure young people have access to impartial advice, information and guidance (IAG) on their career choice

- To support young people making career choices a Fast Tomato (FT) consultant is in post and successfully linking to schools. In addition to the 'Consortium For Learning' success boards are now used in schools. Eastern parishes have been supported in 2007/08 by a mobile Information, Advice and Guidance (IAG) unit. Staff are currently being trained in the use of e-prospects, enabling them to support young people accessing information and the common application process (CAP) is now being used.

We said that we would ensure that young people and families are made aware of the financial support they are entitled to

- The Education Maintenance Allowance (EMA), Care to Learn and Learner Support Funds have been made available and funding workshops were held by the LSC to raise awareness among providers, partners and other relevant agencies

We said that we would improve the success rates of FE courses for 16-18 and 19+ learners, particularly success in 19+ long courses

- The quality of provision is now monitored by the LSC and minimum levels of performance have been introduced

We said that we would work with schools to determine the timeline for meeting the 2013 entitlement

- Six diploma courses have passed through the national gateway and are to be available for teaching in 2009 or 2010. The North Lincolnshire Campus Plan is agreed by all partners and on track to deliver the Entitlement in 2013. A School Engagement Programme is now in place. 48 pre 16 learners have accessed work based learning in 2007/08 and funding has been provided by the LSC for a further 90 learners in 2008/09. We have started to plan the development of an International Baccalaureate at John Leggott College

We said that we would provide young people with a wider range of vocational course opportunities

- The LSC has introduced an open and competitive tendering process to increase and improve provision. An overall provision review mechanism is now in place to work alongside pathways and labour market intelligence to ensure provision meets demand. An Employer Engagement Strategy

has been introduced and the local sixth form provision was reviewed and remodelled for 2008

We said that we would plan the necessary changes in the workforce requirements

- A long-term curriculum planning tool is in place and used in 3 schools. We have applied pedagogy training established and delivered to 26 teachers to prepare to BTEC and diploma courses

We said that we would work with and support E2E providers to increase the number of young people who leave the programme and progress into FE, WBL or employment

- The LSC is closely monitoring all E2E contracts and working with providers to improve the positive destination percentages with the aim of reaching the Humber target of 50%. Over the past year, the LSC has funded two Pre E2E projects as provision for those learners not ready for E2E

### What difference have we made?

'The local authority, together with the Learning and Skills Council, provide strong leadership to support the development of 14-19 provision in North Lincolnshire and to improve the achievement made by young people. Partnership working across the area is well established and effective'.

'A number of Aim higher projects have been effective in raising students' aspirations and attainment'.

'Young people in North Lincolnshire are able to access a broad and appropriate range of post-16 education and training provision....The proportion of year 11 leavers in education, employment and training, at 93% in September 2007, represents a significant increase from the previous year. An increasing number of young people have joined college courses and the number unemployed or in employment without training has been effectively reduced' (JAR).

Emerging findings from the Adolescent Lifestyle Survey (ALS) 2007 suggests that more than half of the young people in the older age groups thought they would still be at university or completing training for their chosen career in five years time.

The figures for 16-18 year olds not in education, employment or training show the multi-agency NEET partnership has made significant progress in reducing the number of NEETs from 9.3% in 2006/7 to 7.0% in 2007/8.

Year 11 progression to post 16 education and training is better than ever at 92.6%

The year 11 progression, for children in care in to education, employment or training at 16 has improved to 92% in 2007 from 72% in 2006.

### Priority 2 Ensure sufficient affordable, accessible & appropriate accommodation for young people

#### Progress on actions during 2007/08

We said that we would deliver the actions in the Young People's Housing Strategy. The delivery of the strategy is on target and reported on quarterly at YPHPG meetings.

We said that we would monitor the number of young people with housing issues to help inform future strategy development and support funding bids for housing and support. Some initial data we have gathered includes

- 382 young people approached ROOF in 2007/08, 232 were homeless (61%) and 24 roofless (6%). An additional 46 were living independently.

We said that we would monitor the effectiveness of support arrangements and continue to help people sustain their tenancies

- The Supporting People service reviews for Mental Health and LDD have completed and included services for children and young people. The current review for Homelessness also includes a focus on young people and completes in July 2008. The Supporting People review for services specifically for young people is due to complete summer/ autumn 2008.

We said that we would work with North Lincolnshire Homes to develop a “choice based lettings” scheme. A successful bid, worth £97k, was submitted with NELC to set up the infrastructure for a choice based lettings scheme and a joint working party was established in March 2008 to support this and a project manager appointed June 2008.

We said that we would work with North Lincolnshire Homes to improve the operation of the Joint Allocations Policy to ensure that young people have appropriate access to accommodation. We made sure that 16-17 year old young people were included in the allocations policy, with appropriate provisions for support arrangements.

We said that we would bid for additional funding in the next Housing Corporation 2008/11 bidding round, and other bidding rounds that benefit young people. Much of this funding is confirmed and is earmarked for providing temporary accommodation to reduce the use of B&B, Youth Build, hostel accommodation, specific accommodation for teenage parents and provide additional supported accommodation.

### **What difference have we made?**

We have provided a pilot project for supported housing for young people in partnership with North Lincolnshire Homes. We have established a ‘multi-agency tenancy agreement. Our evaluation shows that we have been 75% successful in getting sustaining tenancies through this scheme leading to permanent tenancies.

We have procured a mediation service to prevent homelessness by working with parents to keep young people at home. This has been very successful.

North Lincolnshire Council have provided the land for two youth build projects at a nominal lease. Mallileu court, Scunthorpe is currently being built and will provide 6 properties and Cherry Grove will provide 4 properties.

We have reduced the number of 16 and 17 year olds accepted as homeless from 20 to 15 by providing better temporary accommodation while eligibility for more secure and permanent housing is assessed, or mediation is undertaken for a return home. We have enabled more young people to access accommodation with out going through the homelessness route or through mediation and we will continue our efforts to ensure that young people are aware of the pitfalls of leaving home too early and of behaviour which causes them to be asked to leave their home.

Young People’s Accommodation Team have supported 6 units for care leavers 18+. The tenancy support services have supported young people maintain their tenancies. In 2007/08 no care leavers were evicted from social housing.

The young people’s Accommodation Pilot has 8 current occupants. They operate a form of traffic light system. 4 are green i.e. no problems. 4 are orange - 3 because there are some arrears but under control, and 1 only because it is a very recent letting so too soon to judge. In addition, 1 was successful and so was converted to an assured tenancy.

### **Priority 3: To support young people to get a good start in life**

#### **Progress on actions during 2007/08**

We said that we would ensure that young people are supported in the transitions process. The new transitions protocol has been agreed and launched.

We said that we would improve the partnership of Children’s Centres with Connexions and PAs are now based in Barton and Henderson Avenue Children’s Centres and are extending to include Crowle.

We said that we would work jointly with Lincolnshire County Council to launch a pack for parents and carers to promote independent travel for young people with disabilities

- The parent’s pack was launched in October 2007 and copies distributed to colleges and in January 2008 we began work on extending independent travel to mainstream schools. Following this, a database of young people travelling independently has been set up to allow inputs, actions and outcomes can be measured.

The independent travel scheme has had a positive impact on the young people and their families.

We said that we would develop short term accommodation locally in order to prevent young homeless people having to access hostel and Foyer type accommodation outside North Lincolnshire.

Confirmation of the 2008/11 regional housing board allocation, including a young persons housing project, is awaited. A rolling programme is to be developed to review and update the assessment of housing need based on the needs assessment survey baseline (2007).

We said that we would provide support for teenage parents

- A Connexions PA was funded by the Teenage Pregnancy Partnership Board up to March 2008 for the Young People's Education Centre (YPEC).

### What difference have we made?

The proportion of teenage mothers known to Connexions has increased by 34% to 127 between March 2007 and March 2008. The number of 16-19 year old mothers in education, employment and training (EET) has increased from 30 to 37 in the same period. The percentage of mothers in EET was 31% at March 2008, above the England average of 27%.

## CYPP Priority Group – Children in care and care leavers

### Progress on Actions 2007/08

We said that we would ensure that children in care have adequate transition provision and we have reviewed the existing protocols between North Lincolnshire Homes and the Young People's Accommodation Team (YPAT). The Young People's Accommodation Team has increased the number of accommodation units from 9 to 14.

We said that we would ensure that more children in care access higher education. We have developed links with the Aim Higher programme to support more children in care into higher education and plans are in place to further develop support for care leavers accessing FE.

- The PAF A4 indicator for 19 year olds in ETE remains in the highest band at 0.96 and 100% of this group are in suitable accommodation.

We said that we would ensure care leavers and families are well informed about their welfare rights

- A welfare rights training programme is now in place for Children's and Young People's Services and benefits 'surgeries' are in place for young people

### What difference have we made?

- 'Care leavers receive an excellent service for the Children in Care Team and the young people's support service. Every young person has a pathway plan and these are regularly reviewed. Transition arrangements are very good. All care leavers live in suitable accommodation, which is better than the situation found in similar councils and nationally. Young people report satisfaction with their accommodation especially the supported lodgings scheme'
- 'The proportion of care leavers in education, training and employment is high and significantly better than in similar councils and the national average'. (JAR)
- The ratio of the percentage of young people in care who were engaged in education, training or employment at the age of 19 decreased from 1.05 in 2006/07 to 0.96 in 2007/08 but still remains in the top band. This is significantly higher than average of the statistical neighbours in 2006/07 which was 0.73. Our target is to improve this to 1.06.
- We have maintained 100% of eligible young people having a Transitions Plan since 2005/06
- We have maintained 100% of care leavers at 19 living in suitable accommodation (as judged by the council) since 2005/06

## CYPP Priority Group: Disabled children and those with learning difficulties

### Progress on Actions 2007/08

We said that we would provide young people with learning difficulties and/or disabilities with adequate support and provision during transition. The joint transition protocol was launched in 2007 and the Transition Group feeds information into the Turning the Curve Group.

We said that we would undertake further baseline needs analysis to develop locally based post 16 provision for those who currently have to be provided for within external placements. A regional Yorkshire and Humber needs analysis for learners with learning difficulties and/or difficulties has been recently completed and has been published on the LSC website. This identifies the gaps in provision and makes recommendations for addressing these needs. The LSC will be taking forward these recommendations in the near future. Reducing the number of young people travelling out of county to access residential specialist Colleges remains a priority for the LSC.

### What difference have we made?

The education provision for children and young people with learning difficulties and/or disabilities is good for 11-16 year olds and for those post-16... 'The transition process into adult services has recently been reviewed and is working effectively through a well-defined multi-agency approach. Almost all young people have a transition plan, and these are highly personalised and capture their holistic needs'.

'The proportion of young people with learning difficulties and/or disabilities not in education, employment or training is low' (JAR).

Progression rates at St Hugh's Special School for year 11 pupils in 2007 was 95.2% into further learning, which is higher than the average for North Lincolnshire schools (92.6%).

At the end of March 2008 9.7% of the 16-19 year old cohort (792 young people) were categorised by Connexions as having LDD and the overall % EET for 16-19 year olds with LDD was 64.5% .

### Section 3: Glossary

A&E	Accident and Emergency
ABCs	Acceptable Behaviour Contract
AHDC	Aiming High for Disabled Children
ALS	Adolescent Life Survey
AO	Advisory Officer
APA	Annual Performance Assessment
ASB	Anti Social Behaviour
ASBO	Anti Social Behaviour Order
B&B	Bed and Breakfast
BME	Black and Minority Ethnic communities
BMI	Body Mass Index
BNA	Baseline Needs Assessment
BSF	Building Schools for the Future
BTEC	Business and Technology Education Council
C&F	Children and Families
CA	Common Assessment
CAF	Common Assessment Framework
CAFCASS	Children and Family Court Advisory and Support Services
CAMHS	Children and Adolescent Mental Health Service
CAP	Common Application Process
CLLD	Communication, Language and Literacy Development
CTEG	Children's Trust Executive Group
CIC	Children in Care
CIN	Children In Need
CJ	Criminal Justice
COAST	Chlamydia Outreach Advice, Screening and Treatment Team
CP	Child Protection
CPD	Continuing Professional Development
CSH	Centre for Sexual Health
CSP	Children, Strategy and Partnerships
CT	Children's Trust
CTEG	Children's Trust Executive Group
CwAN	Children with Additional Needs
CWDC	Children's Workforce Development Council
CYP	Children and Young People
CYPP	Children and Young People's Plan
CYPS	Children and Young People's Services

CYPSP	Children and Young Peoples Strategic Partnership
DCLG	Department of Communities and Local Government
DCSF	Department for Children, Schools and Families
DELTA	Drug Education Liaison and Treatment Agency
DoH	Department of Health
DSO	Direct Service Organisation
DV	Domestic Violence
E2E	Entry to Employment
EAL	English as an Additional Language
ECM	Every Child Matters
EET	Education, Employment and Training
EMA	Education Maintenance Allowance
EMB	Enabling mothers to breastfeed
ETE	Education, Training and Employment
EYD	Early Years Development
EYFS	Early Years and Foundation Stage
EYP	Early Years Partnership
FE	Further Education
FSM	Free School Meals
FSP	Foundation Stage Profile
FT	Fast Tomato
GCSE	General Certificate of Secondary Education
GNVQ	General National Vocational Qualification
IAG	Information, Advice and Guidance
ISSP	Intensive Supervision and Surveillance Programme
IUD	Intrauterine Device
IUS	Intrauterine System
IVDA	Independent Domestic Violence Advocate
JAR	Joint Area Review
JLC	John Leggott College
KS	Key Stage
LA	Local Authority
LAA	Local Area Agreement
LAC	Looked After Children
LARC	Long-Acting Reversible Contraception
LDD	Learning Difficulties and Disabilities
LLDD	Learners with Learning Difficulties and Disabilities
LPSA	Local Partnership Strategic Agreement
LSC	Learning and Skills Council
LSCB	Local Safeguarding Children Board

MAPT	Multi Agency Preventative Team
MARAC	Multi Agency Risk Assessment Conference
NCH	National Children's Home
NEET	Not in Education, Employment or Training
NELC	North East Lincolnshire Council
NI	National Indicator
NICU	Neonatal Intensive Care Unit
NLC	North Lincolnshire Council
NLC	North Lindsey College
NLH	North Lincolnshire Homes
NLPCT	North Lincolnshire Primary Care Trust
NPQICL	National Professional Qualification in Integrated Centre Leadership
OfSTED	Office for Standards in Education
PA	Personal Advisor
PAYP	Positive Activities for Young People
PE	Physical Education
PEP's	Personal Education Plan
PFSS	Practical Family Support Service
PIAP	Post Inspection Action Plan
PNS	Primary National Strategy
PRU	Pupil Referral Unit
PSA	Public Service Agreement
PS CPD	Primary Strategy Continuing Professional Development
PSHE	Personal, Social, Health Education
QA	Quality Assurance
QPR	Quarterly Performance Review
RAP	Raising Attainment Plan
SEAL	Social and Emotional Aspects of Learning
SEN	Special Educational Needs
SIP	School Improvement Partnership
SRE	Sex and Relationships Education
STI	Sexually Transmitted Infection
TIPD	Teacher's Initial Professional Development
TP	Teenage Pregnancy
TtC	Turning the Curve
TYS	Targeted Youth Service
WBL	Work Based Learning
YIP	Youth Inclusion Programme
YJB	Youth Justice Board
YOT	Youth Offending Team

YP	Young People
YPAT	Young Peoples Accommodation Team
YPHPG	Young People's Housing Partnership Group
YPEC	Young Peoples Education Centre