

Safer Communities Plan



Safer Communities Plan 2008-2011

Prepared By:	Bruno Watson BEM Deputy Head of Safer Neighbourhoods (Crime Reduction)
Version No.	4
Date Last Updated:	12 Jun 08

Please Note:

The process of establishing appropriate Safer Neighbourhoods performance targets is inextricably linked to similar processes being undertaken concurrently by various partner bodies. It is quite possible that partners will negotiate different targets for the same performance indicator.

In order to arrive at workable targets that are supported across the partnership, the Safer Neighbourhoods Strategy Board has agreed that the final targets used for operation performance management of the partnership will be the most stringent targets agreed with any 'Responsible Authority' partner.

The targets contained within this document are indicative of current negotiations and are shown in an italic font. When final targets are agreed, this will be indicated by targets being shown in a regular font

Table of Contents

Introduction	3
<i>When this Plan will be Reviewed</i>	3
The National Community Safety Objectives	4
<i>PSAs Covered in the National Community Safety Plan</i>	4
<i>Performance Management</i>	5
The North Lincolnshire Perspective	6
<i>The Local Area Agreement (LAA)</i>	6
<i>The Joint Strategic Intelligence Assessment</i>	7
Review of the 2005-8 Strategy	8
The Plan	9
<i>The Partnership’s Safer Communities Mission Statement</i>	9
<i>Partnership Priorities</i>	9
<i>Partnership Strategic Approach</i>	9
<i>Partnership Delivery & Performance Management Mechanism</i>	10
<i>Relationship with other Bodies</i>	11
<i>Key Partners & Responsibilities</i>	11
<i>Funding & Resources</i>	13
Priority Action 1 – Reduce Serious Violence	14
<i>Primary Targets</i>	15
<i>Contributory Targets</i>	15
<i>Main Activities</i>	15
<i>Action Plan</i>	16
Priority Action 2 – Reduce Serious Acquisitive Crime	18
<i>Primary Targets</i>	19
<i>Contributory Targets</i>	19
<i>Main Activities</i>	19
<i>Action Plan</i>	20
Priority Action 3 – Tackle Local Priorities	21
<i>Primary Targets</i>	22
<i>Contributory Targets</i>	22
<i>Main Activities</i>	23
<i>Action Plan</i>	24
Priority Action 4 – Reduce Reoffending	26
<i>Primary Targets</i>	27
<i>Main Activities</i>	27
<i>Action Plan</i>	28
Priority Action 5 – Partnership Development	29
<i>Targets</i>	30
<i>Main Activities</i>	30
<i>Action Plan</i>	31

Introduction

This Safer Neighbourhoods Community Safety Plan is produced for the guidance of all local partners in North Lincolnshire with a role in delivering community safety.

It is one of three component plans of the Safer Neighbourhoods Strategy for 2008-11. The other two plans relate to:

- Stronger Communities
- Substance Misuse

This plan sets out the Safer Neighbourhoods Partnership's overarching approach to the reduction of crime and disorder in North Lincolnshire and the resolution of local community safety issues.

It details the partnership's Safer Communities priorities and performance targets and outlines the main programmes and activity strands that will deliver them.

It does not cover all partnership work streams but highlights those areas which, at the time of writing, are considered to be most important to the delivery of the Partnership's strategic objectives.

When this Plan will be Reviewed

This is a rolling three year plan valid until March 2011.

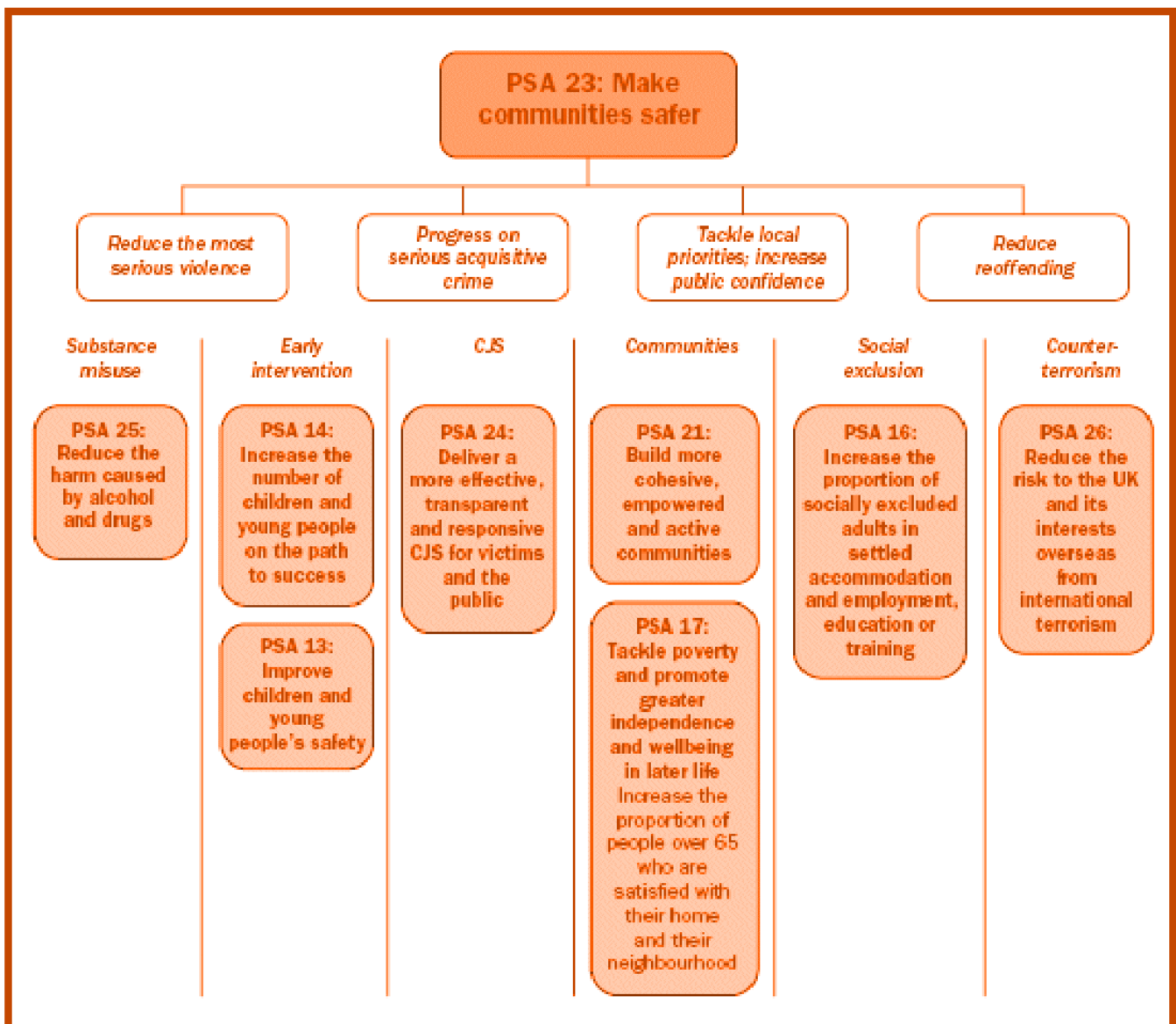
It will be reviewed and re-issued annually to reflect both national and local community safety priorities.

The National Community Safety Objectives

In July 2007, the Government published *Cutting Crime: A New Partnership 2008–11* (the Crime Strategy), which described a refreshed approach to tackling crime and increasing community safety. This sets the overarching strategic framework for crime and community safety for the three years from 2008/09 to 2010/11. This was followed, in October 2007, by the publication of a new set of Public Service Agreements (PSAs), also covering the period 2008/09 to 2010/11. The PSAs set out the Government's high-level objectives for public service delivery, including a PSA entitled 'Make Communities Safer'.

There is strong continuity between the six themes of the National Community Safety Plan 2006–09 and the community safety priorities as set out in the new set of PSAs. There is, however, some shift in emphasis: e.g. a stronger focus on more serious violence; greater flexibility for local partners to deliver local priorities; a specific outcome to increase community confidence; and the need to reflect the increased threat to communities posed by violent extremists.

PSAs Covered in the National Community Safety Plan



As a means of delivering PSA 23 (Make Communities Safer), the National Community Safety Plan highlights four priority actions:

- **Priority Action 1**
Reduce the most serious violence, including tackling serious sexual offences and domestic violence.
- **Priority Action 2**
Continue to make progress on serious acquisitive crime through a focus on the issues of greatest priority in each locality and the most harmful offenders – particularly drug-misusing offenders.
- **Priority Action 3**
Tackle the crime, disorder and anti-social behaviour issues of greatest importance in each locality, increasing public confidence in the local agencies involved in dealing with these issues.
- **Priority Action 4**
Reduce reoffending through the improved management of offenders.

Through the inclusion of a series of supporting PSAs, the plan recognises the complexity of community safety and the strong links with such issues as poverty, community cohesion and substance misuse.

Performance Management

As a means of monitoring local performance against National Targets, the performance of Safer Neighbourhoods and Humberside Police will be monitored through a new national performance framework known as 'APACs' (the Assessment of Police and Community Safety).

APACs will recognise that agencies other than the Police Service are crucial to success in terms of the Government's crime and community safety goals. The system will promote joint working through a single measurement framework agreed with partners and aligned to other performance frameworks.

The North Lincolnshire Perspective

The North Lincolnshire Strategic Partnership brings together the key providers of services from across North Lincolnshire to address the complex challenges needed to improve the quality of life for the communities of North Lincolnshire. The partnership provides a platform to discuss, debate and progress issues that will make a difference to the area.

It exercises that function through the production and delivery of a Sustainable Community Strategy that sets out how partners will work with local people to create a sustainable community by addressing economic, social and environmental needs. This Sustainable Community Strategy is the long term framework that influences all other plans and strategies produced by partner organisations such as the police and health services.

The Local Area Agreement (LAA)

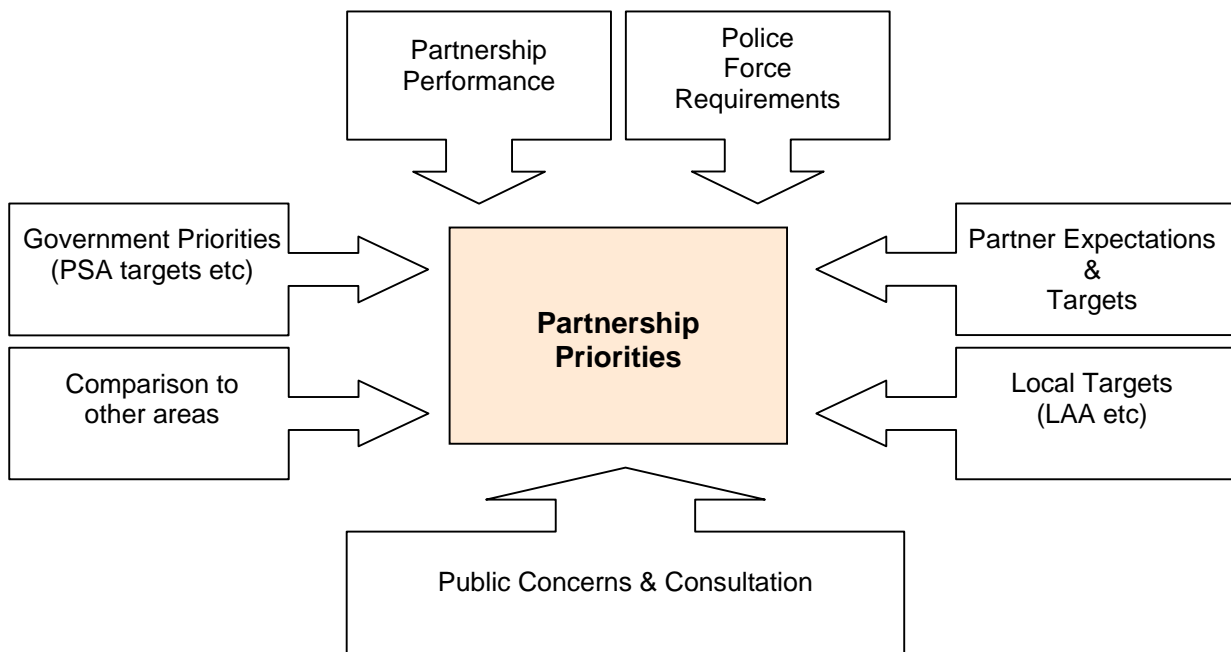
A local area agreement (LAA) is a three-year agreement between a local area and central government. The LAA describes how local priorities will be met by delivering local solutions. It also contributes to national priorities set out by the Government.

The LAA is negotiated between the local strategic partnership (LSP) and the regional Government Office (GO). The LSP consists of all the key players in a local area who deliver services. The local authority is the lead partner in the LSP. The local authority negotiates the LAA on behalf of its LSP and is the only body accountable to government. Other key players in a LSP include the police and the primary care trust.

The LAA allows services to be delivered in a more joined-up way by bringing together partners from the public, private and voluntary sectors. The LAA pools the streams of funding each partner into a single pot. This avoids duplicating effort and wasting money. The agenda for the LAA is set out in the Sustainable Community Strategy.

The determination of community safety priorities for inclusion within the North Lincolnshire Sustainable Community Strategy and LAA is the responsibility of the North Lincolnshire Strategic Partnership, under guidance from the Safer Neighbourhoods Partnership which is the statutory Crime and Disorder Reduction Partnership (CDRP) for North Lincolnshire.

In practical terms, priorities are affected by a number of factors, including those shown below:



The Joint Strategic Intelligence Assessment

In 2006, a review of the partnership provisions of the Crime and Disorder Act 1998 and the Police Reform Act 2002 led to a series of recommendations and the implementation of a new set of national minimum standards for Crime and Disorder Reduction Partnerships that came into force in England in August 2007. These new standards include a specific requirement for the Partnership to conduct a Strategic Assessment of crime, disorder and substance misuse on an annual basis for the purpose of informing the Partnership's rolling three year plan.

As a result, Safer Neighbourhoods undertook a Joint Strategic Intelligence Assessment (JSIA) during the period October 2007 to February 2008 based upon available information, intelligence, and data derived from the last 12 month period (1st October 2006 to 30th September 2007). It aimed to furnish the Safer Neighbourhoods Partnership, with an accurate picture of the current, emerging and longer-term issues facing the North Lincolnshire Area by identifying:

- The levels and patterns of crime and disorder and substance misuse in the area
- The changes in those levels and patterns since the previous report
- Why the patterns have changed
- The matters that the responsible authorities should prioritise in their work
- The matters which people living or working in the area consider should be prioritised to combat crime and disorder and substance misuse.
- Environmental Issues
- The extent to which the previous partnership plan had been implemented
- The matters which should be brought to the attention of the Local Strategic Partnership or other bodies.

The JSIA was presented to and accepted by the Safer Neighbourhoods Strategy Board in February 2008 and this plan has been largely based upon that analysis.

Review of the 2005-8 Strategy

The JSIA showed that the Safer Neighbourhoods Partnership made reductions in British Crime Survey (BCS) Comparator Crime¹ of nearly 30% during the period 2005-8 against a target reduction of 22.5%.

That said, comparison with our 'Most Similar CDRPs' shows that the recorded acquisitive crime levels (particularly domestic burglary and vehicle crime) remain significantly higher than our peers.

Our performance in terms of violent crime is in line with our peers and our work in relation to alcohol related disorder has shown some very good results locally.

Our performance in respect of responding to Domestic Violence is more difficult to assess; we have not managed to achieve our aspirations of increasing the level of incident reporting which we set out in 2005 but we have undoubtedly improved our support to victims through the provision of Independent Domestic Violence Advocates and an Independent Sexual Violence Advocate provided in partnership with our Voluntary Sector colleagues. We recognise we still have much to do in this area and this is reflected in our plan for 2008-11.

Our work to tackle anti-social behaviour has shown some very good results in those areas where we have made a concerted collective attempt to tackle local issues and where we have maintained the will to persevere with difficult problems despite resource pressures.

We still have to sharpen our processes in the way we respond to individual complaints of anti-social behaviour, issues we hope to resolve during the life of this plan through the development of a multi-agency Service Level Agreement which clearly details the roles and responsibilities of partner agencies.

Our development of the Safer Neighbourhoods Action Programme (SNAP) during 2007 was the Partnership's approach to the implementation of Neighbourhood Policing. Developed following extensive research (and modelled largely on the Chicago 'CAPs' model), the system relies heavily on successful community engagement and development and was undertaken against a backdrop of a general sway toward a wider Neighbourhood Management style.

The development of the SNAP has taken considerable partnership effort since its successful operation requires the consent and full co-operation of a number of different part bodies. We still have some way to go and the further development of the SNAP will be a key piece of work in the new plan.

We have operated a number of successful projects over the last three years and there have also been a few which have been less successful. We have learned that best results come from evidence based interventions which are highly focussed and closely monitored on performance.

Much of our 'behind the scenes' activity over the last year has been around strengthening our internal systems and becoming more focussed on performance. We now have robust performance management systems in place and we have standardised many of our reporting systems which has led to increased productivity. We still have much work to do in this area and through the new plan we will be concentrating a lot of our effort on continuing to improve the way we identify, develop, fund and manage our crime reduction activities.

¹ BCS Comparator Crime are crimes recorded by the Police which are most similar to those crime types included in the British Crime Survey.

The Plan

The Partnership's Safer Communities Mission Statement

To reduce crime, disorder and substance misuse in North Lincolnshire through effective partnership working.

Partnership Priorities

Priorities may alter in response to changing crime trends and local conditions; however, the Partnership has determined that the following actions will be given priority during 2008-2011:

- **Priority Action 1**
Reduce the most serious violence, including tackling serious sexual offences and domestic violence.
- **Priority Action 2**
Continue to make progress on serious acquisitive crime through a focus on the issues of greatest priority in each locality and the most harmful offenders – particularly drug-misusing offenders.
- **Priority Action 3**
Tackle local priorities by dealing effectively with the crime, disorder and anti-social behaviour issues of greatest importance in each locality, increasing public confidence in the local agencies involved in dealing with these issues.
- **Priority Action 4**
Reduce re-offending through the improved management of offenders (including drug misusing offenders)
- **Priority Action 5**
Further develop the partnership.

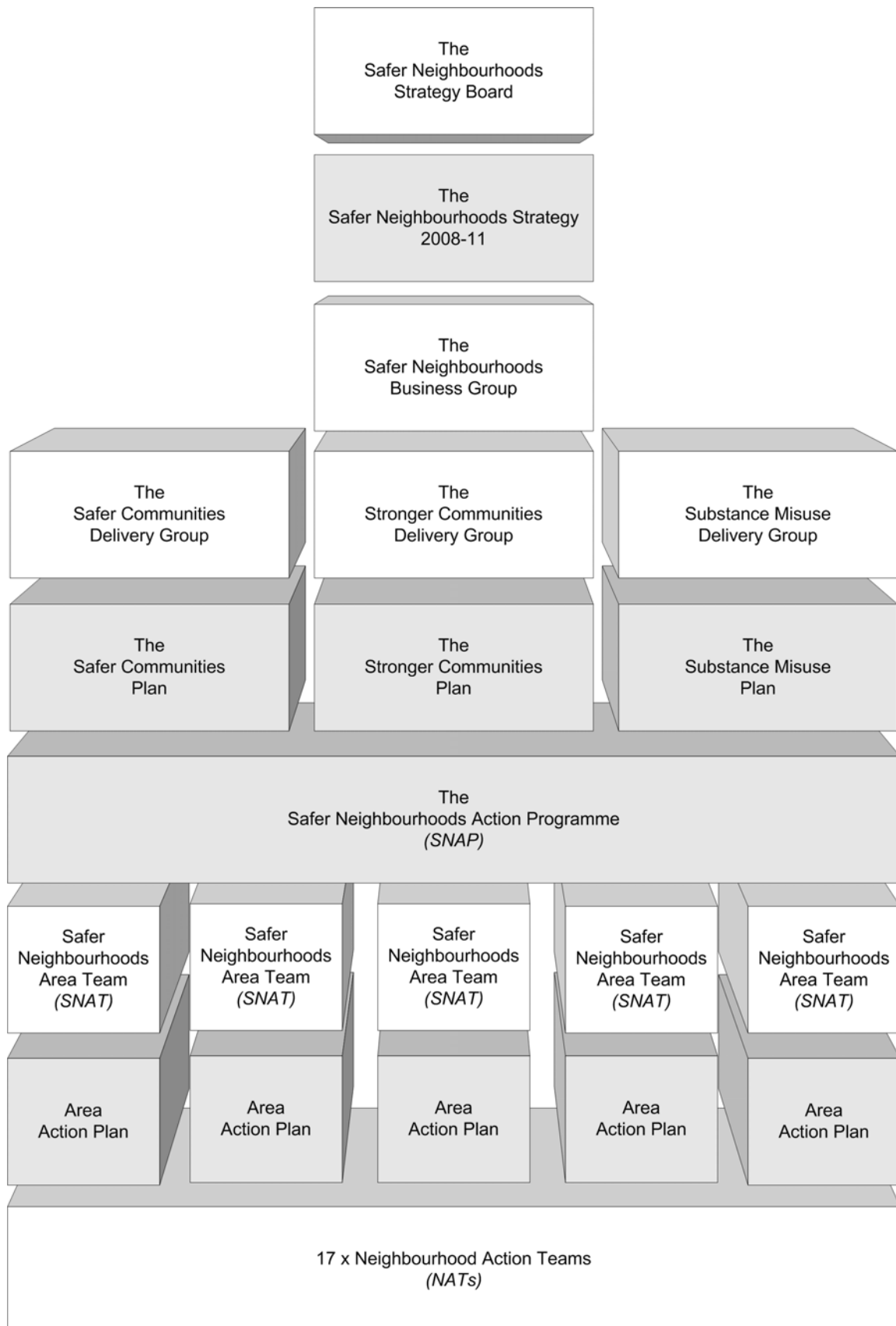
Partnership Strategic Approach

In implementing this Plan, the Partnership intends to:

- Ensure that partnership activities are 'evidence led', concentrating efforts on those places, people and issues that are causing the most harm to our communities.
- Engage with communities in a meaningful way through the operation of the Safer Neighbourhoods Action Programme (SNAP).
- Make best use of available information and intelligence sources to direct operational activity.
- Employ a stringent performance management framework.
- Increase partnership effectiveness by removing barriers to 'joined up' working.
- Support the voluntary and community sector in helping to reduce crime, disorder and substance misuse.
- Research, identify and disseminate recognised 'best practice' to our partners and the public.

Partnership Delivery & Performance Management Mechanism

The Safer Communities Plan will be delivered by component bodies of the Safer Neighbourhoods strategic framework through a taught performance management system shown in diagrammatic form below:



Relationship with other Bodies

The Safer Neighbourhoods Partnership recognises that successful delivery of the Safer Communities Plan relies upon close co-operation and synergy with other bodies operating in the area.

This is achieved through maintaining good communications with those bodies as follows:

- Local Strategic Partnership (LSP)**
 Several members of the Safer Neighbourhoods Strategy Board also sit on the board of the LSP. Additionally, a member of the Youth Offending Team sits on the Safer Neighbourhoods Business Group.
- Local Criminal Justice Group (LCJG)**
 Representatives from Safer Neighbourhoods sit on the Local Criminal Justice Board. Additionally, a member of the LCJG Secretariat sits on the Safer Neighbourhoods Business Group.
- Youth Offending Team (YOT)**
 A representative from the Safer Neighbourhoods Hub sits on the YOT steering Group. Additionally, a member of the Youth Offending Team sits on the Safer Neighbourhoods Business Group.
- Children and Young People's Strategic Partnership (CYSP)**
 A representative from the Safer Neighbourhoods Hub sits on the CYSP. Additionally, a member of the CYSP sits on the Safer Neighbourhoods Business Group.

Key Partners & Responsibilities

Key Partner	Key Responsibilities
All	<ul style="list-style-type: none"> Participate in JSIA and strategy development processes. Information sharing. Assist in strategy implementation. Participate in the SNAP.
Safer Neighbourhoods Hub	<ul style="list-style-type: none"> Partnership activity co-ordination and commissioning (including drug treatment services). Performance monitoring. Partnership administrative support. Communications.
Humberside Police Authority	<ul style="list-style-type: none"> Maintain an efficient and effective police service.
Humberside Police	<ul style="list-style-type: none"> Intelligence gathering and analysis. Enforcement action.
Humberside Fire & Rescue Service	<ul style="list-style-type: none"> Fire prevention.

North Lincolnshire Council	<ul style="list-style-type: none"> • General responsibilities placed under Section 17 of the Crime and Disorder Act 1998. • Improve the physical environment in order to reduce crime opportunities (street lighting etc). • Provide and monitor the Council CCTV systems. • Promote of crime reduction messages. • Promote of 'Secured by Design' principles during planning processes. • Manage young offenders.
North Lincolnshire Primary Care Trust	<ul style="list-style-type: none"> • Participate in communication campaigns. • Give appropriate priority to the rehabilitation of offenders. • Influence the type of information collected to support the further development of activities to reduce crime, disorder and substance misuse. • Explore how Patient and Public Involvement (PPI) activities can be enhanced to support the reduction of crime. • Provide information and multi-agency training to staff on community safety issues. • Contribute to the holistic package of support for victims of crime by ensuring liaison include regular contact with voluntary support organisations such as Victim Support.
National Probation Service Humberside	<ul style="list-style-type: none"> • Manage offenders.
North Lincolnshire Homes	<ul style="list-style-type: none"> • Develop and support of Residents' Associations. • Work collaboratively in responding to crime and anti-social behaviour issues affecting North Lincolnshire Homes' Properties or Tenants.
HANWaG (Humberside Association of Neighbourhood Watch Groups)	<ul style="list-style-type: none"> • Develop and support of Neighbourhood Watch and other types of 'Watch' schemes.
Neighbourhood Management Bodies	<ul style="list-style-type: none"> • Support activities to reduce crime, disorder and substance misuse within the boundaries of Neighbourhood Management areas.

Funding & Resources

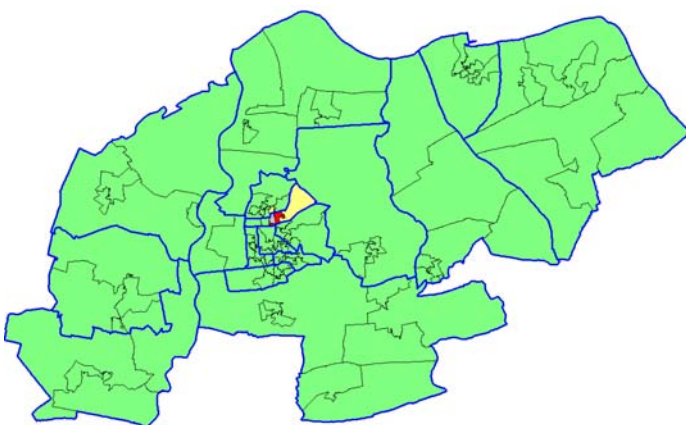
Funding for Safer Neighbourhoods activity comes from a number of sources including the National Treatment Agency, the Local Area Agreement, partner members and the many organisations and individuals who commit staff, volunteer time or other resources to our activities.

Detailed funding plans are maintained by the Safer Neighbourhoods Hub.

Priority Action 1 – Reduce Serious Violence

Main Points from the JSIA:

- Violent crime encompasses a very broad range of offences from homicides to relatively minor child on child altercations.
- Violence against the person (including sexual offences) accounted for 20% of all recorded crime in North Lincolnshire with robbery adding a further 1%.
- The types of violent crime causing most concern in North Lincolnshire are:
 - Alcohol Related Violence
 - Domestic Violence
- Violent crimes occur most frequently in Scunthorpe. Town Ward recorded a level of violent crime almost 3 times higher than the national average.
- The number of reported Domestic Violence incidents reported to the Police is decreasing.
- Recorded assaults in North Lincolnshire have fallen by 19% since 2003/4.



*Distribution of Recorded Violent Crime
in North Lincolnshire*

Some of the things we are already doing include:

- We are working with our partners to increase reporting of domestic violence and to increase support to victims.
- We are encouraging the reporting of hate crimes².
- We are working together to reduce alcohol related crime and disorder

Resultant Recommendations for this Plan:

- That the reduction of Domestic Violence and Alcohol Related Violence should be considered as priority activities by the Safer Neighbourhoods Partnership.
- Partnership activity to reduce violent crime should be most concentrated in the central Scunthorpe area.
- Targeted awareness raising.
- Increased roll out of SmartWater through Neighbourhood Watch Groups.
- Continued deployment of mobile CCTV equipment.
- Continued use of leaflet drops to hotspot area.
- Support the One Community target-hardening scheme.
- Further develop the Neighbourhood Watch network and conduct a formal evaluation of its effectiveness.

² Hate crime is any criminal offence, committed against a person or property that is motivated by the offender's hate against people because of their sex, race, religion, disability or sexual orientation. A victim of hate crime does not have to be either a member of a minority or someone who is for some reason considered vulnerable.

Primary Targets³

Indicator	Baseline 2007/8	Target Number of Crimes by 2008/9	Target Number of Crimes by 2009/10	Target Number of Crimes by 2009/10	Target % Reduction by 2010/1	How Measured
NI 020 Assault with Injury Crime Rate	9.24 per 1,000 pop (1469)	8.8 (1395)	8.3 (1320)	7.7 (1221)	16.9%	Crimes recorded by B Division, Humberside Police
NI 032 Repeat Incidents of Domestic Violence	<i>tbc</i>	<i>tbc</i>	<i>tbc</i>	<i>tbc</i>	<i>tbc</i>	

Contributory Targets⁴

Indicator	Baseline 2006/7	Target % Reduction by 2008/9	Target Number of Crimes by 2008/9	Target Number of Crimes by 2009/10	Target Number of Crimes by 2009/10	Target % Reduction by 2010/1	How Measured
Common Assault	<i>tbc</i>	<i>tbc</i>	<i>tbc</i>	<i>tbc</i>	<i>tbc</i>	<i>tbc</i>	Crimes recorded by B Division, Humberside Police
NI 039 Alcohol Harm related hospital admissions	<i>tbc</i>	<i>tbc</i>	<i>tbc</i>	<i>tbc</i>	<i>tbc</i>		Hospital data

Main Activities

We will seek to reduce violent crime over the next three years by:

- Improving the way we use information to inform our action and monitor our performance.
- Concentrating our main efforts on:
 - Reducing Domestic Violence
 - Reducing Alcohol Related Violence.
 - Improving our support to victims of sexual violence.

³ These targets have been formally agreed as part of the Local Area Agreement. The reductions stated are based upon the recorded crime figures of 2006/7.

⁴ These targets are not measured individually as part of the Local Area Agreement but they are important contributors toward meeting the overall community safety aspirations of the Safer Neighbourhoods Partnership. The reductions stated are based upon the recorded crime figures of 2006/7.

Action Plan

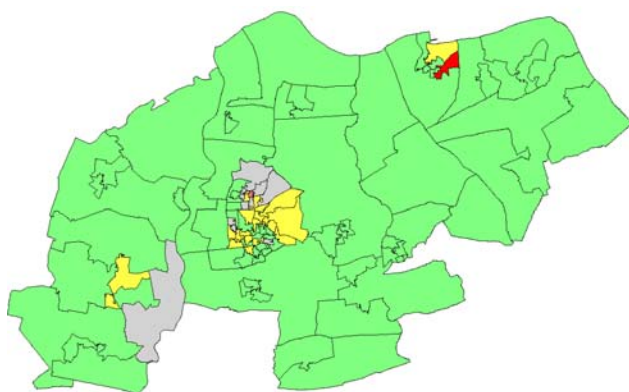
Key Tasks	Timescale	Input: Lead person/ Participants/ Resources	Output Targets	Remarks / Performance Against Target
Short Term				
Establish Reduction Targets and develop local action plans for the reduction of alcohol related violence in the Scunthorpe North and Barton & District Action Team Areas.	By Jun 08	Safer Neighbourhoods Hub	Targets & Plans Established	
Continue Operation of Nite Safe operations in Scunthorpe Town Centre	From 1 Apr 08	Safer Neighbourhoods Hub	Nite Safe Operates	Further detail in separate NiteSafe Action Plan
Develop the case for a Cumulative Impact Zone in Scunthorpe Town Centre	By Jun 08	Nite Safe Project Team	CIZ Application submitted	
Further develop the Licensing Panel to deal robustly with those licensees displaying signs of poor premises management.	By Jun 08	Nite Safe Project Team	Panel fully operational	
Continue support for Independent Domestic Violence Advocates and Independent Sexual Violence Advocate.	From 1 Apr 08	Safer Neighbourhoods Hub	2 x IDVA 1 x ISVA	
<ul style="list-style-type: none"> • Review the partnership's collective response to Domestic Violence, including: <ul style="list-style-type: none"> ○ Refuge Provision. ○ Floating support service. ○ Explore the feasibility of developing a dispersed housing scheme. ○ Explore co-location of DV response services. ○ Links with Children and Young People block of the LAA. 	1 Oct 08	Safer Neighbourhoods Hub	Report accepted by Safer Neighbourhoods Strategy Board	

Establish a Domestic Violence Task Group for the provision of technical guidance for the partnership's collective response to Domestic Violence	Apr 08	Safer Neighbourhoods Hub	Task Group Operational with revised Terms of Reference	
Expand the scope of the Nite Safe Project Team to include responsibility for the delivery of the crime and disorder elements of the local Alcohol Harm Reduction Strategy.	By Jun 08	Nite Safe Project Team	Terms of Reference amended	
Medium Term				
Develop a 'Best Bar None Scheme'	2008/9	Nite Safe Project Team	Scheme Operational	
Improve data collection mechanisms and sharing arrangements with PCT, Acute Trust and East Midlands Ambulance Service	2008/9	Safer Neighbourhoods Hub	Identified JSIA gaps filled	
Accelerate activity to increase reporting of domestic violence	2008/9	DV Task Group	5% increase in reporting by Apr 2009	Further detail in separate DV Action Plan
Continue Training and awareness raising activities	2008/9	DV Task Group	100 training/awareness raising places available	Further detail in separate DV Action Plan
Long Term				
Develop closer links between Pub Watch & North Lincolnshire Business Association (NLBA) in order to encourage the gathering and sharing of intelligence relating to individuals who cause problems to businesses in both the day and night time economies.	2010/11	Scunthorpe North Area Action Team	50% of Pub Watch members are members of NLBA	
Rationalise radio communication systems between partners and CCTV Control Centre	2010/11	Safer Neighbourhoods Hub	Radios operate on a single shared frequency	

Priority Action 2 – Reduce Serious Acquisitive Crime

Main Points from the JSIA:

- Property crime accounts for over half of all recorded crime in North Lincolnshire. Theft, burglary and vehicle crime, in that order make up the majority of recorded property crimes.
- Property crimes occur most frequently in Scunthorpe, particularly in those areas nearest the Town Centre.
- The number of house burglaries Burglary has reduced by approximately 45% since 2003 but is still above the average for England and Wales.
- Vehicle crime in North Lincolnshire has halved since 2003/4.



*Distribution of Recorded Dwelling Burglary
in North Lincolnshire*

Some of the things we are already doing include:

- Operation of the Prolific and Other Priority Offender (PPO) Scheme.
- Operation of the Drugs Intervention Programme (DIP).
- The fitting of improved security measures to vulnerable properties (The One Community Scheme).
- The deployment of 'SmartWater' property coding.
- The continual development of the Neighbourhood Watch Network.
- The deployment of Mobile CCTV equipment.
- Awareness raising activities.

Resultant Recommendations for this Plan:

- That the reduction of Domestic Burglary and Theft From Motor Vehicles be included in the Safer Neighbourhoods Control Strategy and be considered a priority activity of the following Safer Neighbourhoods Area Action Teams:
 - Scunthorpe North
 - Scunthorpe South
 - Barton & District
- Targeted awareness raising.
- Increased roll out of SmartWater through Neighbourhood Watch Groups.
- Continued deployment of mobile CCTV equipment.
- Continued use of leaflet drops to hotspot area.
- Support the One Community target-hardening scheme.
- Further develop the Neighbourhood Watch network and conduct a formal evaluation of its effectiveness.

Primary Targets⁵

Indicator	Baseline 2007/8	Target Number of Crimes by 2008/9	Target Number of Crimes by 2009/10	Target Number of Crimes by 2010/11	Target % Reduction by 2010/1	How Measured
NI 016 Serious Acquisitive Crime Rate	18.90 per 1,000 pop (3005)	17.6 (2803)	16.6 (2601)	14.8 (2332)	22.4%	Crimes recorded by B Division, Humberside Police

Contributory Targets⁶

Indicator	Baseline 2007/8	Target Number of Crimes by 2008/9	Target Number of Crimes by 2009/10	Target Number of Crimes by 2010/11	Target % Reduction by 2010/1	How Measured
Domestic burglary	961	890	819	725	24.6	Crimes recorded by B Division, Humberside Police
Theft of a motor vehicle	645	627	608	584	9.5	
Theft from a motor vehicle	1217	1128	1039	920	24.4	
Robbery	182	158	134	103	43.4	

Main Activities

We will seek to reduce violent crime over the next three years by:

- Improving the way we use information to inform our action and monitor our performance.
- Concentrating our main efforts on:
 - Reducing Domestic Burglary.
 - Reducing Theft from Motor Vehicles
- Increasing Community involvement in crime reduction

⁵ These targets have been formally agreed as part of the Local Area Agreement. The reductions stated are based upon the recorded crime figures of 2006/7.

⁶ These targets are not measured individually as part of the Local Area Agreement but they are important contributors toward meeting the overall community safety aspirations of the Safer Neighbourhoods Partnership. The reductions stated are based upon the recorded crime figures of 2006/7.

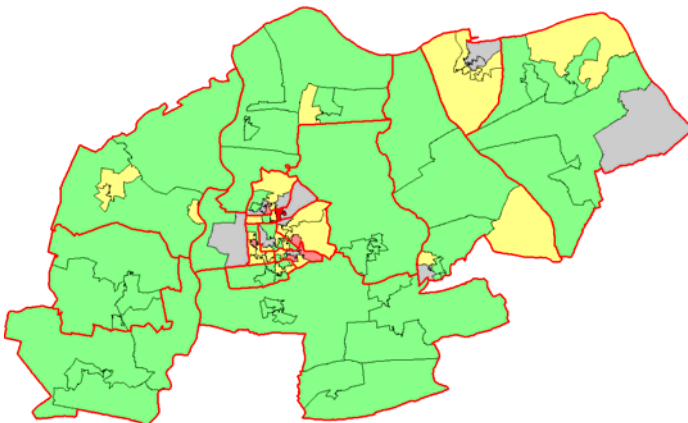
Action Plan

Key Tasks	Timescale	Input: Lead person/ Participants/ Resources	Output Targets	Remarks / Performance Against Target
Short Term				
Establish Reduction Targets and develop local action plans for the reduction of Dwelling Burglary and Theft From Motor Vehicles in priority Action Team Areas	By Jun 08	Safer Neighbourhoods Hub	Targets & Plans Established	
Provide training on the conduct of Crime prevention surveys	by Sep 08	Safer Neighbourhoods Hub	100% of PCSOs are trained. 10 NW Co-ordinators trained	
Medium Term				
Continue roll-out of SmartWater	2008/9	Safer Neighbourhoods Hub	6,000 kits issued	Further detail in separate SmartWater Action Plan
Continue target hardening programme for burglary victims	2008/9	N L Council	100% of consenting victims' properties target hardened	
Improve partnership's use of CCTV equipment	2008/9	Safer Neighbourhoods Hub	Joint strategy agreed between partners	
Improve security of public Car Parks	2008/9	N L Council	2 more car parks achieve Park Mark award	
Develop a mechanism for the speedy electronic dissemination of crime alerts	2008/9	Safer Neighbourhoods Hub	200 subscribers	
Develop 'No Cold Calling Zones' to reduce opportunities for doorstep crime	2008/9	Trading Standards	5 Zones established in vulnerable areas.	
Develop new activity streams in partnership with the North Lincolnshire Business Association (NLBA) to reduce acquisitive crime in Scunthorpe Town Centre	2008/9	Scunthorpe North Area Team	Town Centre acquisitive crime reduced by 10%	
Long Term				
Increase number of calls to CrimeStoppers from North Lincolnshire	2010/11	Humberstone Police	x% increase in calls by 2010/1	

Priority Action 3 – Tackle Local Priorities

Main Points from the JSIA:

- Local people appear to have significant concerns about:
 - Anti-social behaviour (ASB).
 - Criminal Damage.
 - The behaviour of young people (and particularly their involvement with alcohol).
- Early results from the 2007 Household Survey show that 30.9% of respondents consider ASB to be a 'fairly big problem' or 'very big problem' in their area. This is a 40% increase on the 2004 baseline figure of 22% and it has increased steadily since that time.
- The number of ASB incidents reported to the police in North Lincolnshire is rising.
- Both criminal damage and ASB occur most frequently on Friday evenings.
- Recorded criminal damage fell by 10% during the period Oct 06 – Sep 07 compared with the previous year.
- More than £14 million pounds worth of criminal damage was caused in North Lincolnshire during the period Oct 06 – Sep 07.



*Distribution of Recorded ASB incidents
in North Lincolnshire*

Some of the things we are already doing include:

- Operation of a multi agency 'ASB Panel' to identify and deal appropriately with problem individuals.
- Operation of police 'Respect' patrols.
- Local problem solving at Neighbourhood Action Team Level.
- Employment of the full range of enforcement powers.
- Joint operations to remove abandoned vehicles and to combat nuisance off-road motorcycling.
- Provision of diversionary activities for young people.
- Support for youth mentoring and training schemes.

Resultant Recommendations for this Plan include:

- That the reduction of ASB be included as a priority by all Area Action Teams.
- That consideration is given to expanding the scope of current 'Respect Patrols' to include participation by youth workers.
- That closer links be formed between Safer Neighbourhoods and the Children and Young Peoples' Strategic Partnership with a view to developing joint prevention and response plans.
- That a mechanism is developed for recording collective Problem Solving Activity.
- That a review is carried out focussing on a wide range of issues around Friday nights, the provision of youth services and high levels of criminal damage and anti-social behaviour.
- That a service level agreement is developed by partners detailing their roles and commitment to problem resolution.

Primary Targets⁷

Indicator	Baseline 2006/7	Target % by 2008/9	Target % by 2009/10	Target % by 2010/11	How Measured
NI 021 Dealing with local concerns about ASB and crime by the local council and Police	16% (Source 2006/7 LGUSS)	17%	18%	19%	Place Survey (details tbc)

Contributory Targets⁸

Indicator	Baseline 2006/7	Target % by 2008/9	Target % by 2009/10	Target % by 2010/11	How Measured
NI 024 Satisfaction with the way the police and local council dealt with ASB	16%	17%	18%	19%	Place Survey (details tbc)

Indicator	Baseline 2007/8	Target % Reduction by 2008/9	Target Number of Crimes by 2008/9	Target Number of Crimes by 2009/10	Target Number of Crimes by 2010/11	Target % Reduction by 2010/1	How Measured
Criminal Damage	3781	6.2	3546	3280	3039	19.6	Crimes recorded by B Division, Humberside Police
ASB Calls for Police Service	9923	6.0	9328	<i>tbc</i>	<i>tbc</i>	<i>tbc</i>	

⁷ These targets have been formally agreed as part of the Local Area Agreement.

⁸ These targets are not measured individually as part of the Local Area Agreement but they are important contributors toward meeting the overall community safety aspirations of the Safer Neighbourhoods Partnership. The reductions stated are based upon the recorded crime figures of 2006/7 unless otherwise stated.

Main Activities

We will seek to tackle local priorities over the next three years by:

- Operating and further developing our Safer Neighbourhoods Action Programme⁹ comprising our:
 - Approved consultation mechanism.
 - Neighbourhood Action Teams (NATs).
 - Safer Neighbourhoods Area Teams (SNATs)
- Improving our collective response to ASB and Criminal Damage.
- Working more closely with the Children and Young Peoples' Strategic Partnership to address youth issues.
- Developing an IT based mechanism for the monitoring of partnership problem solving activity.

⁹ The Safer Neighbourhoods Action Programme (SNAP) is an agreed partnership process for identifying, prioritising and tackling local community safety issues. It is outlined in a separate document.

Action Plan

Key Tasks	Timescale	Input: Lead person/ Participants/ Resources	Output Targets	Remarks / Performance Against Target
Short Term				
Establish Reduction Targets and develop local action plans for the reduction of ASB and criminal damage in all Action Team Areas	By Jun 08	Safer Neighbourhoods Hub	Targets & Plans Established	
Continue to operate an ASB Task Group for the provision of technical guidance for the partnership's collective response to ASB & Criminal Damage	Apr 08	Safer Neighbourhoods Hub	Task Group Operational with revised Terms of Reference	
Conduct an evaluation of the Schools Early Intervention Programme	By Jun 08	Safer Neighbourhoods Hub	Evaluation report considered by ASB Task Group	
Review the partnership's collective response to ASB and develop a Service Level Agreement between major partners detailing their roles and commitment to ASB resolution.	By 1 Oct 08	Safer Neighbourhoods Hub	SLA agreed and signed by: <ul style="list-style-type: none"> • N L Council • Humberside Police • N L Homes • YOT 	
Review the wide range of issues around Friday nights, the provision of youth services and the high levels of criminal damage and ASB and develop solution recommendations	By 1 Oct 08	ASB Task Group / CYPSP	Review report considered at a joint meeting of SN Strategy Group and the Children and Young People's Strategic Partnership.	
Conduct a deployment trial of the 'PRIME' database system for the monitoring of partnership problem solving activity	By 1 Oct 08	Safer Neighbourhoods Hub	Trial report submitted to Safer Communities Delivery Group for consideration	
Continue Respect patrols	Ongoing	Humberside Police	Increased police presence at identified peak times.	
Medium Term				
Further develop automated information sharing between partners	2008/9	Safer Neighbourhoods Hub	Report on information improvement options considered by Safer Communities Delivery Group.	Further detail in separate Action Plan
Increase partnership participation in of Respect Patrols (Youth workers etc)	2008/9	ASB Task Group	Partnership representatives are deployed as part of Respect Patrol at peak times.	

Roll-out the PRIME database systems across North Lincolnshire	2008/9	Safer Neighbourhoods Hub	System operated by all NATs and Area Teams	
Long Term				
Further develop PRIME system to include other Neighbourhood Management Issues.	2010/11	Safer Neighbourhoods Hub	PRIME provides useful data for future JSIA processes	

Priority Action 4 – Reduce Reoffending

Main Points from the JSIA:

- Analysis of detected acquisitive crimes showed that over a third of offences were committed by less than 4% of offenders (just 8 offenders were responsible for 220 crimes). 2,184 violent crimes were committed by 1,854 different offenders.
- 16 offenders (0.8%) accounted for 99 (4%) detected violent crimes.
- Alcohol appears to be a factor in about two-thirds of these offences.

Some of the things we are already doing include:

- We are operating a Drugs Interventions Programme (DIP), where we attempt to get those drug users arrested for acquisitive crime into early drug treatment
- We operate a Prolific and Other Priority Offender (PPO) scheme where partners engage known prolific offenders closely.
- The Probation Service and Youth Offending Team (YOT) operate a number of programmes designed to stop re-offending.

Resultant Recommendations for this Plan:

- Partnership support for the following activity streams should continue:
 - The PPO Scheme.
 - The DIP.
 - YOT Mentoring Scheme.
- The partnership should further develop its use of information streams to assist in the early identification of those who are, or are likely to become prolific offenders.

Primary Targets¹⁰

Indicator	Target % Reduction by 2008/9	Target Number of Crimes by 2008/9	Target % Reduction by 2010/1	How Measured
<i>NI30</i> <i>Re-offending rate of Prolific and Priority Offenders</i>	<i>2007 16% reduction</i>	<i>19%</i>	<i>TBC</i>	

Main Activities

We will seek to reduce re-offending over the next three years by:

- Maintaining a focus on those offenders causing the most harm to our communities.
- Monitoring those individuals responsible for high volumes of crimes.
- Breaking the cycle of Drugs, Offending, Prison

¹⁰ These targets have been formally agreed as part of the Local Area Agreement. The reductions stated are based upon the recorded crime figures of 2006/7.

Action Plan

Key Tasks	Timescale	Input: Lead person/ Participants/ Resources	Output Targets	Remarks / Performance Against Target
Short Term				
Continue support for the Prolific and Other Priority Offender Scheme	From 1 Apr 08	Probation Service Some LAA Funding	PPO Team continues to operate.	
Continue support for the YOT Mentoring Scheme	From 1 Apr 08	YOT Some LAA Funding	YOT Mentoring Scheme continues to operate.	
Develop a mechanism for the routine analysis of crime statistics to identify repeat offenders at an early stage	From 1 Apr 08	DIB	Quarterly Report to PPO Steering Group.	
Continue support for the Drug Interventions Programme	From 1 Apr 08	Substance Misuse Team Pooled Treatment budget including contributions from Home office and NHS	Agreed suite of targets and Key Performance Indicators – regular reports to Safer Neighbourhoods Board	
Medium Term				
Identify repeat offenders at Area Level and develop local plans to minimise the harm caused to local communities.	2009/10	SNATs	Plans developed and implemented.	

Priority Action 5 – Partnership Development

Main Points from the JSIA:

- Some difficulties were experienced in extracting usable data from partners. There were no objections from any partner to sharing data per se, however, it is apparent that much data which could be of use in informing partnership activity is either not collected or is not stored in a format which allows it to be effectively shared with or used by the Partnership.
- Some confusion exists about the roles of new bodies within the partnership, particularly those connected to the Safer Neighbourhoods Action Programme.
- The Neighbourhood Watch network continues to thrive.
- Public surveys suggest that there is still a considerable untapped volunteer resource in North Lincolnshire.
- Members of the public remain largely unaware of much of the partnership's work.
- The timing of the annual household survey is not ideal since the results are not available early enough to fully influence the JSIA and other partnership decision making processes.

Some of the things we are already doing include:

- Developing written terms of reference for all partnership bodies to explicitly state their roles, functions and relationships to other partnership groups.
- Incrementally increasing the data available to influence decision making.
- Hosting partnership forums twice yearly.
- Supporting the further development of Neighbourhood Watch.
- Conducting a review of the IT challenges faced by the Safer Neighbourhoods Hub in their operation of a multi-agency, multi-system community safety team.

Resultant Recommendations for this Plan:

- That the Safer Neighbourhoods web presence is reviewed and that the partnership website is adopted as the primary vehicle for communicating partnership activity with the public.
- That the LSP be asked to consider moving the household survey forward such that the results are available to the Partnership on 1 December annually.
- That the partnership makes an e-newsletter available to voluntary subscribers.
- That the partnership's 'Approved Consultation Mechanism' be expanded to become more reflective of public opinion.
- That the partnership works to further develop community involvement in crime reduction.
- That the partnership works to improve its internal communication.
- That the partnership hosts at least one major public engagement event each year.

Targets

Indicator	Target by 2008/9	Target by 2010/1	How Measured / Remarks
Number of visitors to Safer Neighbourhoods Website	<i>tbc</i>	<i>tbc</i>	Safer Neighbourhoods Web Stats
<i>tbc</i>			

Main Activities

We will seek to further develop the partnership over the next three years by:

- Ensuring our compliance with the National Minimum Standards for CDRPs.
- Redesigning and re-launching the partnership website such that it becomes the primary vehicle for both external and internal partnership communication on partnership-wide issues.
- Offering increased training opportunities for members of the Voluntary and Community Sector (VCS) in order to increase their capacity and involvement.
- Engaging partners in a variety of events throughout the period.
- Hosting a major public consultation event annually.
- Further developing the Neighbourhood Watch Network.

Action Plan

Key Tasks	Timescale	Input: Lead person/ Participants/ Resources	Output Targets	Remarks / Performance Against Target
Short Term				
Ensure Partnership compliance with National Minimum Standards	By 1 Jun 09	Safer Neighbourhoods Hub	100% compliant with minimum standards	
Redesign and re-launch the Safer Neighbourhoods Website	By 1 Oct 08	Safer Neighbourhoods Hub	Website re-launched	
Develop an eNewsletter for partners and members of the public	By 1 Oct 08	Safer Neighbourhoods Hub	<ul style="list-style-type: none"> 1st Issue – Oct 08 300 Subscribers by 1 Mar 09 	
Undertake a review of partnership data sharing and develop a plan for improvements	By 1 Oct 08	Safer Neighbourhoods Hub	Review report considered by Safer Neighbourhoods Business Group.	
Medium Term				
Host a major public consultation and 'Face the People' event annually	Annually each October	Safer Neighbourhoods Hub	Event hosted and >250 attendees	Potential links to Great Youth Debate
Provide training opportunities for VCS members	2008/9	Safer Neighbourhoods Hub / VANL	50 training places	Links to Volunteer Bureau activity
Further develop Neighbourhood Watch Network and conduct a formal evaluation of their effectiveness.	2008/9	HANWaG	10 new Groups established + evaluation report complete	Further detail in separate HANWaG Action Plan
Expand the Partnership web presence down to Area Level (i.e. Area Team websites)	2008/9	Safer Neighbourhoods Hub	Website data available at area level	
Long Term				
Expand the partnership web presence down to Ward level (i.e. NAT websites)	2009/10	Safer Neighbourhoods Hub	Website data available at Ward level	

The Safer Neighbourhoods Partnership
Shelford House
Shelford Street
SCUNTHORPE
DN15 6QB

Tel: 01724-272252